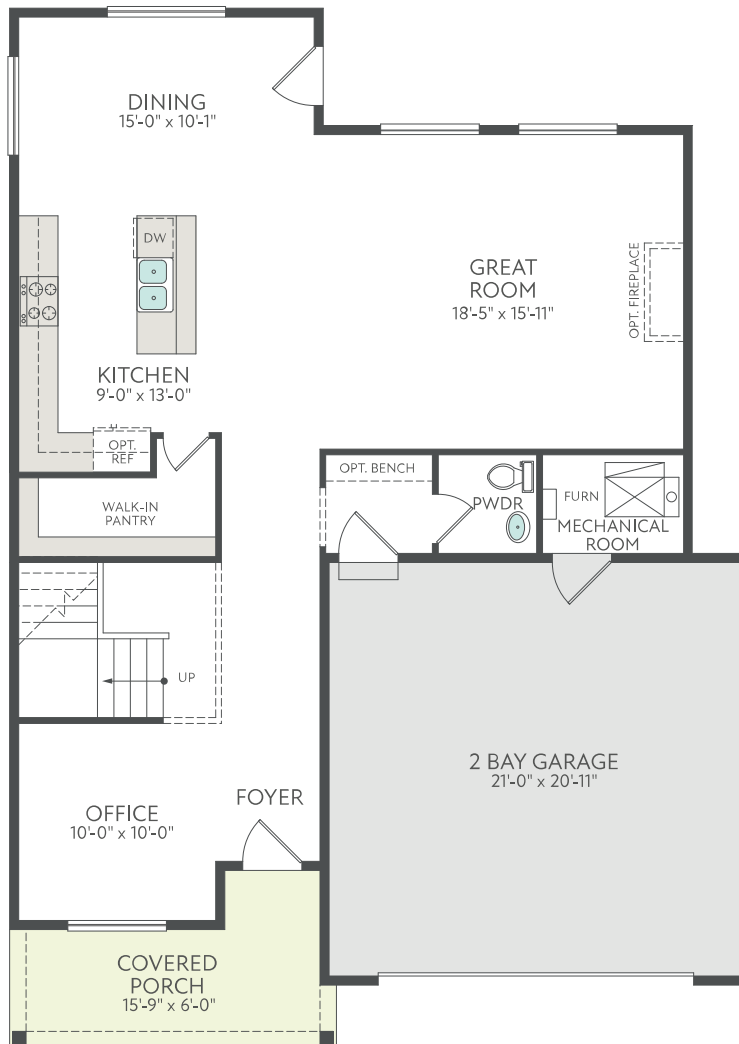


# Keystone Construction - The Seaside

4-5 Beds • 2.5 Baths • 2-3 Car Garage • 2,683 Sq. Ft. • 2 Story

## First Floor



<http://KeyStoneConstructionbuilders.com/>

Keystone Construction reserves the right to modify or change at any time our floor plans, included features, materials, and pricing. All floor plans, elevations, dimensions, and square footages are approximates. Artistic renderings and may not be to scale. See a Keystone representative for more details.

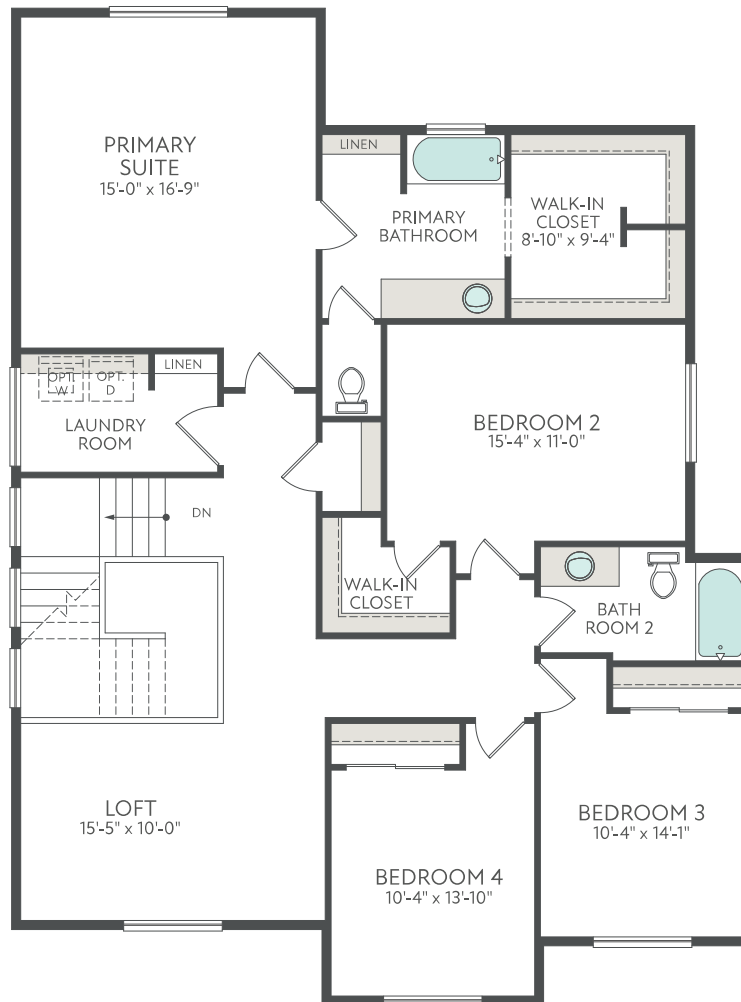




# Keystone Construction - The Seaside

4-5 Beds • 2.5 Baths • 2-3 Car Garage • 2,683 Sq. Ft. • 2 Story

## Second Floor



<http://KeyStoneConstructionbuilders.com/>

Keystone Construction reserves the right to modify or change at any time our floor plans, included features, materials, and pricing. All floor plans, elevations, dimensions, and square footages are approximates. Artistic renderings and may not be to scale. See a Keystone representative for more details.





# Keystone Construction - The Seaside

4-5 Beds • 2.5 Baths • 2-3 Car Garage • 2,683 Sq. Ft. • 2 Story



<http://KeyStoneConstructionbuilders.com/>

Keystone Construction reserves the right to modify or change at any time our floor plans, included features, materials, and pricing. All floor plans, elevations, dimensions, and square footages are approximates. Artistic renderings and may not be to scale. See a Keystone representative for more details.





# Keystone Construction - The Seaside

---

4-5 Beds • 2.5 Baths • 2-3 Car Garage • 2,683 Sq. Ft. • 2 Story

## Selected Options

Elevations Options

- Seaside - Farmhouse

---

<http://KeyStoneConstructionbuilders.com/>

Keystone Construction reserves the right to modify or change at any time our floor plans, included features, materials, and pricing. All floor plans, elevations, dimensions, and square footages are approximates. Artistic renderings and may not be to scale. See a Keystone representative for more details.



