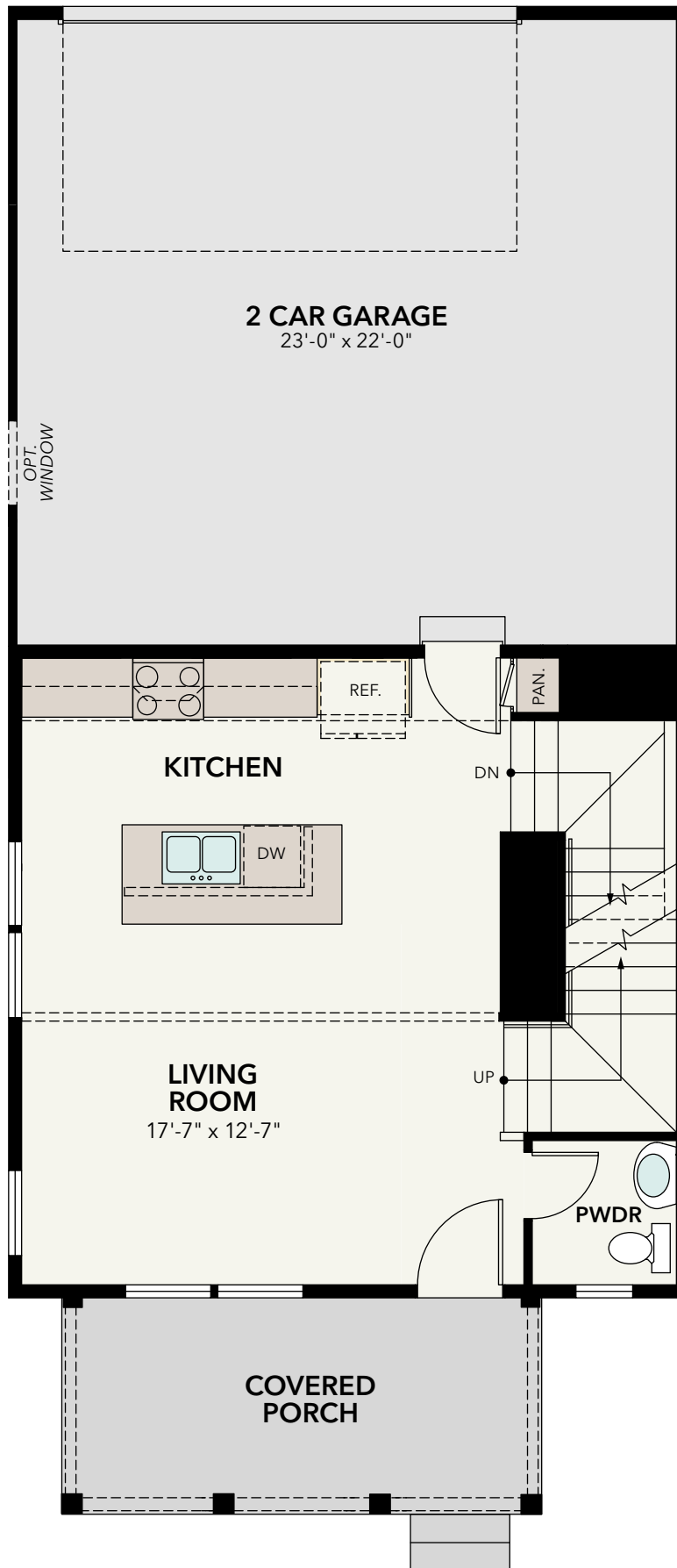


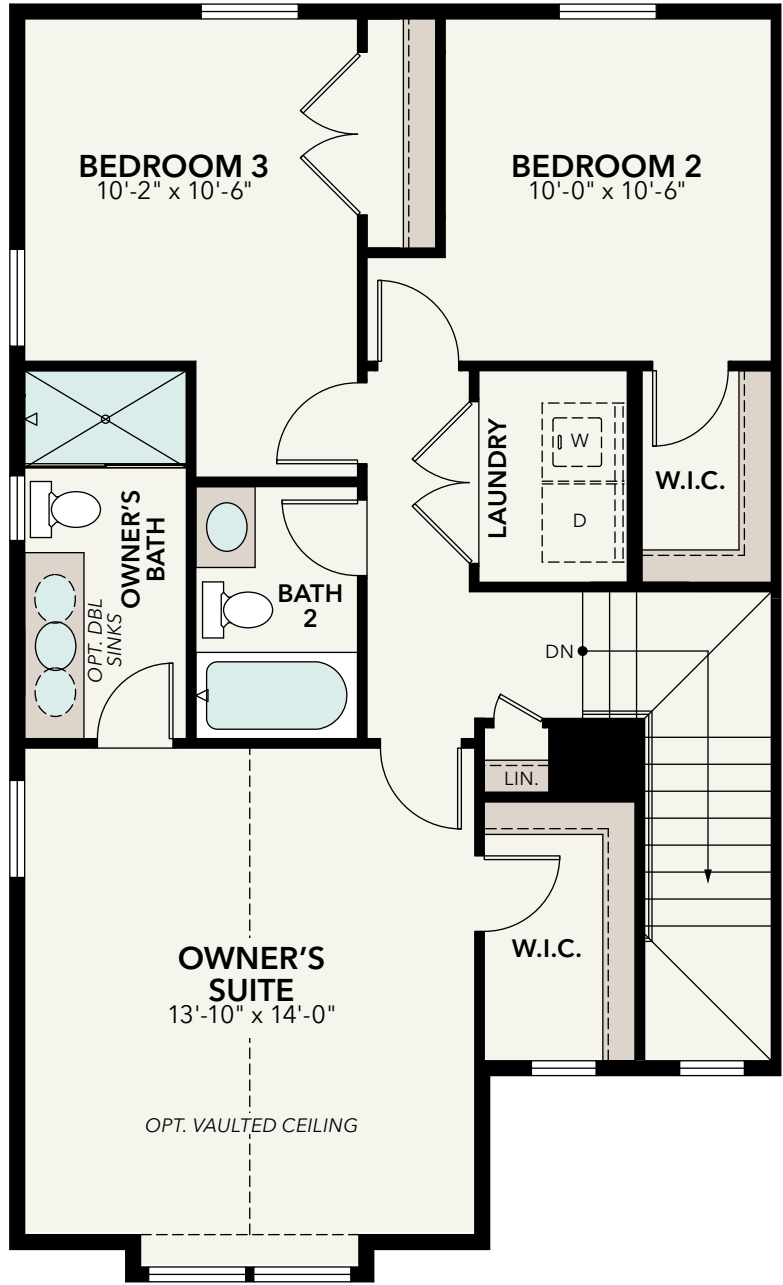
BASEMENT

Ivy Duplex
 3 BEDROOMS
 2.5 BATHS

SQUARE FOOTAGE	
	Elevation A
FIRST FLOOR	548
SECOND FLOOR	877
TOTAL (FINISHED)	1,425
BASEMENT (UNFINISHED)	552
TOTAL	1,977
2-CAR GARAGE	536
COVERED PORCH	125



FIRST FLOOR



SECOND FLOOR