




Priced From
\$486,400

4 Elevations Available

 1,794 Sq.Ft.

 3 Bedrooms

 2.5 Bathrooms

 2 - 3 Car Garage

With a contemporary design in every aspect, The Richmond floor plan is a beauty. Including 3 bedrooms and 2.5 baths, this 2-story floor plan provides the space you need in style. At the entrance, you'll discover a powder bath and a hallway into the open concept living space. The kitchen features a large pantry to store all your kitchen necessities, with the great room having an optional fireplace to warm up the room during the winter months. A bright loft space with windows at the top of the stairs welcomes you into the resting space upstairs, with the owner's suite, owner's bath, spacious walk-in closet, bedrooms, convenient laundry, and bathroom.



Traditional Stucco



Traditional Hardboard



Farmhouse

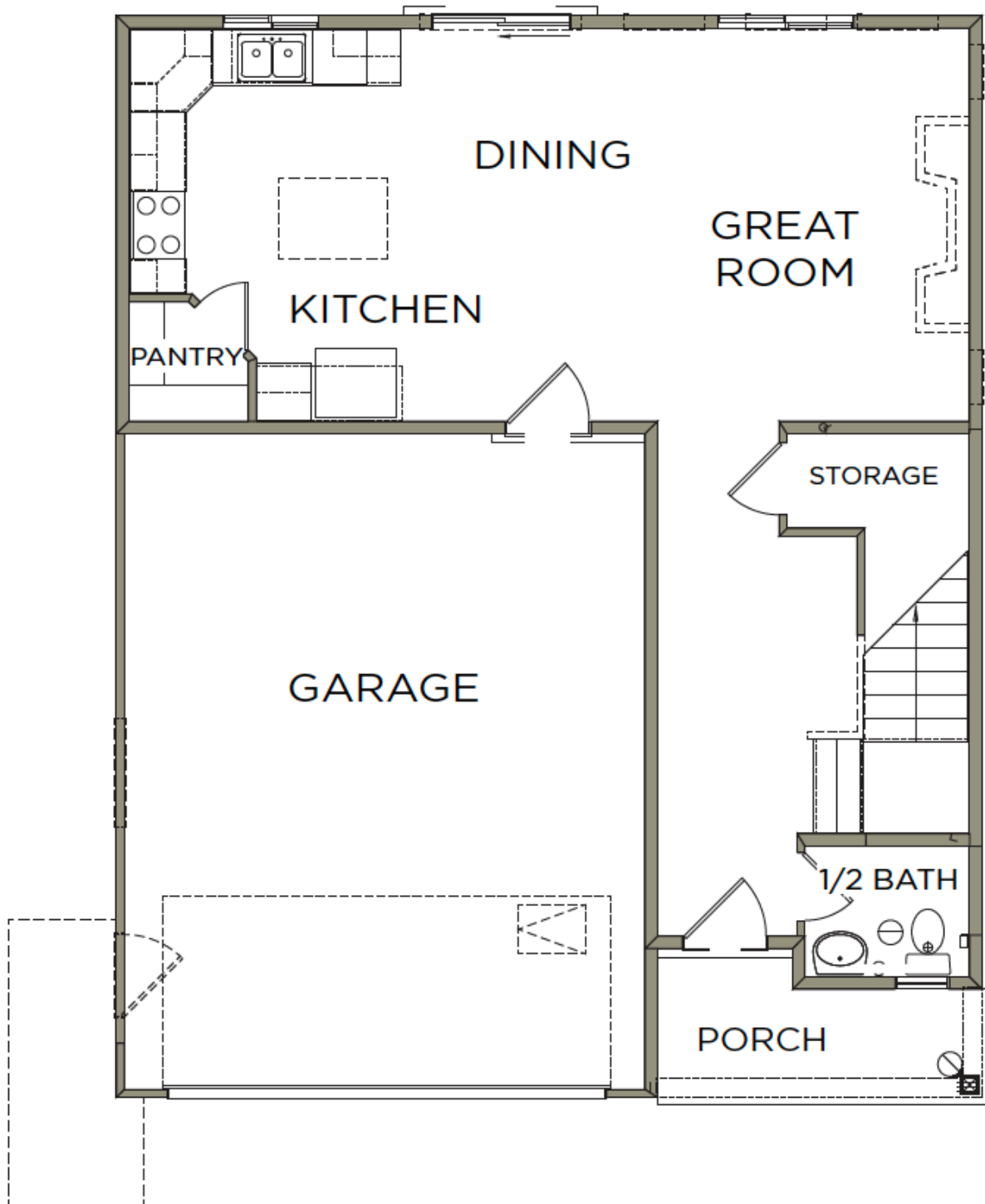


SINGLE FAMILY **RICHMOND**



Craftsman

MAIN LEVEL- SLAB ON GRADE



UPPER LEVEL

