

THE TULIP



Exterior A

1,772 sq. ft.

3 - 4 Bedrooms

2 - 3 Full Baths

1 Half Bath

2 Car Garage



Exterior B

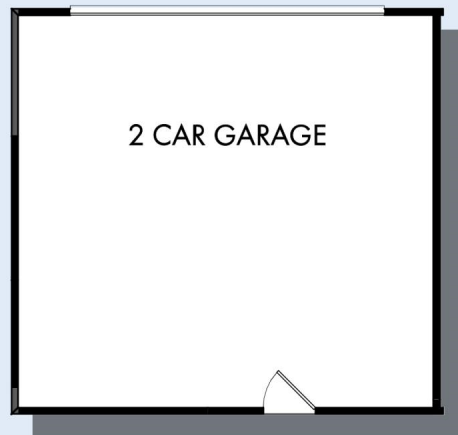


Exterior C

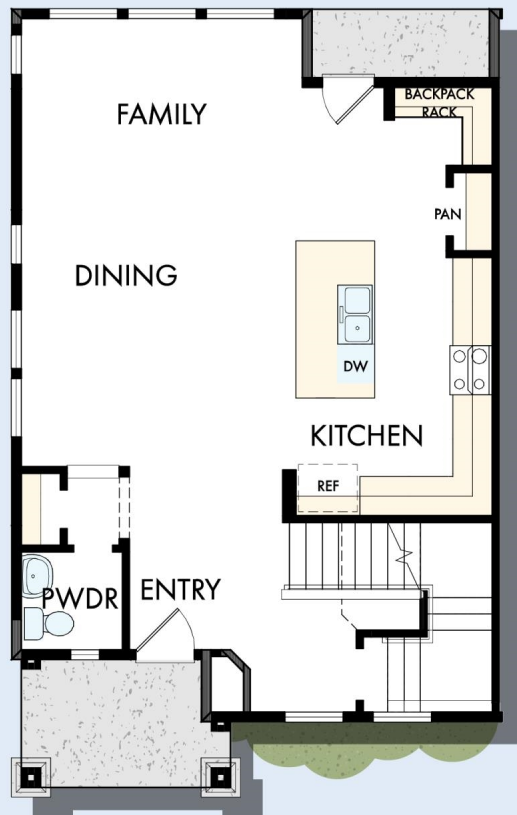
David Weekley
Homes

THE TULIP

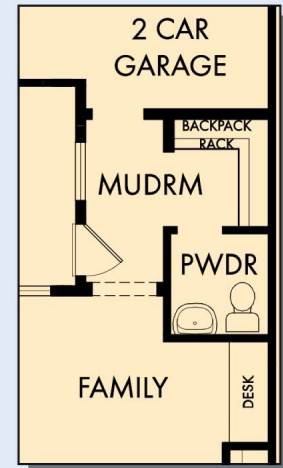
1,772 sq. ft. • 3 - 4 Bedrooms • 2 - 3 Full Baths • 1 Half Bath • 2 Car Garage



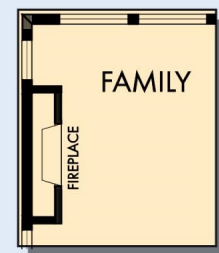
OPTIONAL OUTDOOR LIVING



FIRST FLOOR



OPTIONAL MUDROOM



OPTIONAL WALL FIREPLACE AT FAMILY

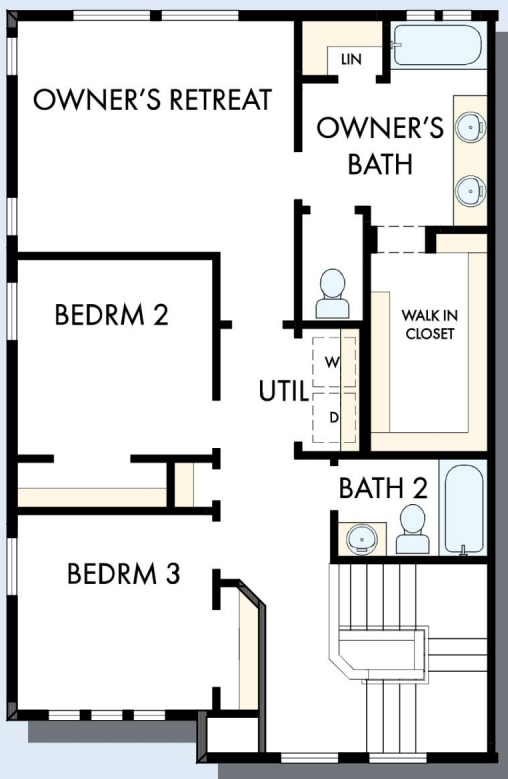
THE TULIP



OPTIONAL RETREAT
AT BEDROOM 3



OPTIONAL DROP IN
TUB WITH SEPARATE
SHOWER AT
OWNER'S BATH

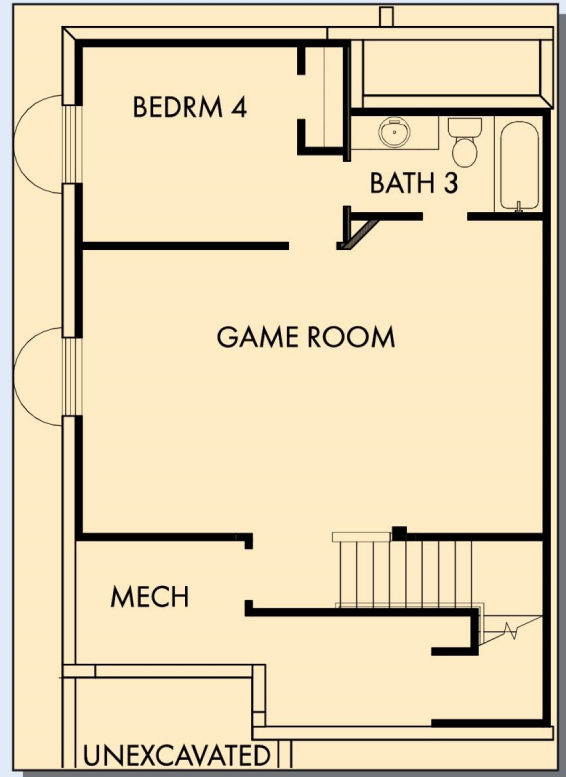
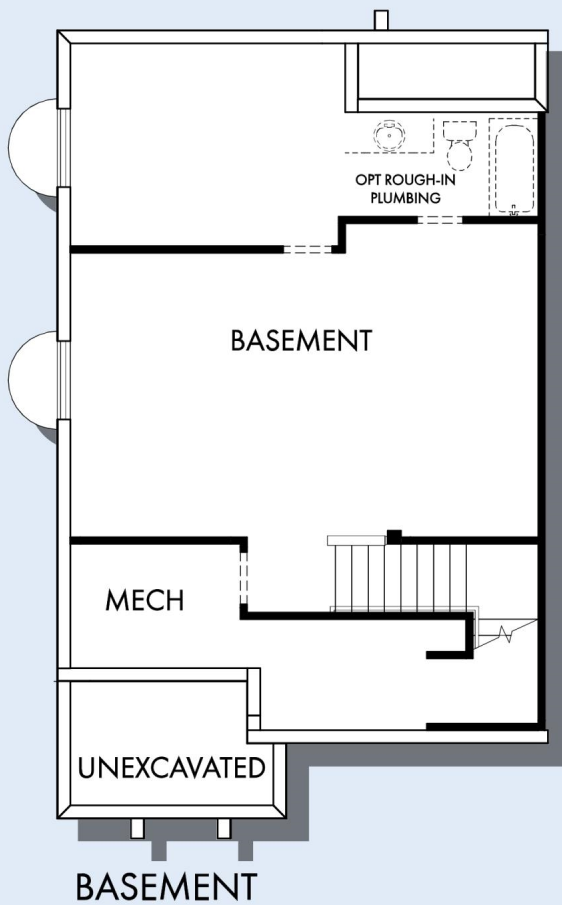
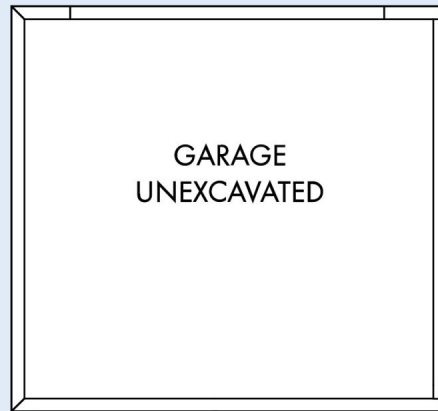


SECOND FLOOR

For additional options, please visit DavidWeekleyHomes.com

DavidWeekleyHomes.com

THE TULIP



OPTIONAL GAME ROOM WITH BEDROOM 4 AND BATH 3 AT BASEMENT

For additional options, please visit DavidWeekleyHomes.com



See a David Weekley Homes Sales Consultant for details. Prices, plans, dimensions, features, specifications, materials, and availability of homes or communities are subject to change without notice or obligation. Illustrations are artist's depictions only and may differ from completed improvements. Copyright © 2021 David Weekley Homes - All Rights Reserved. Salt Lake City, UT

DavidWeekleyHomes.com