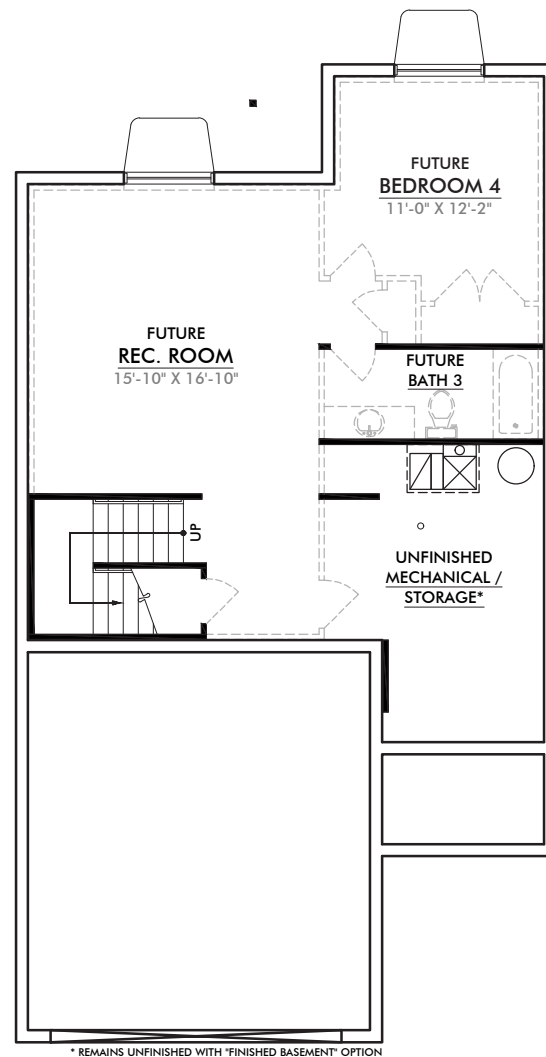


Basement



SEE THE 3D TOUR OF THE FITZGERALD
www.NilsonHomes.com/FITZGERALD



Nilson Homes has a wide variety of home designs, model homes and communities throughout Weber and Davis Counties. Please contact your New Home Sales Representative today to find out more about building your future home.

GephardtApproved



builder designs



NILSONHOMES.COM

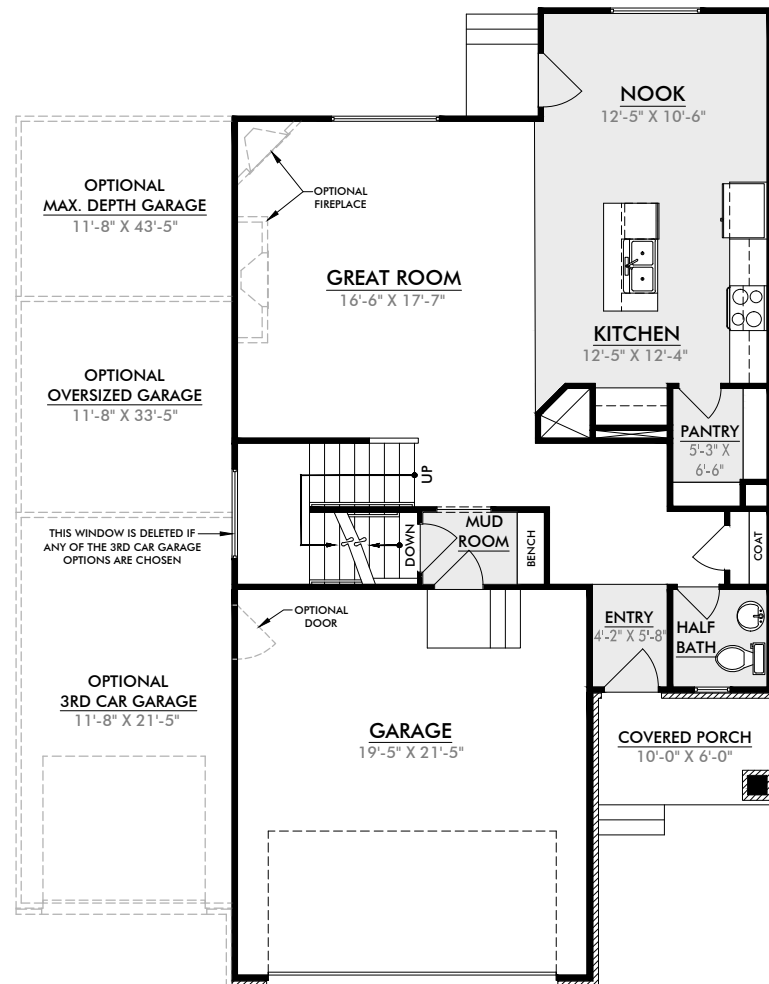
801.458.9040

TOTAL SQ. FT.:	3,012
TOTAL FINISHED SQ. FT.:	2,004
TOTAL UNFINISHED SQ. FT.:	1,008
BED: (FINISHED/TOTAL)	3/4
BATH: (FINISHED/TOTAL)	2.5/3.5
WIDTH:	30'-0"
DEPTH:	54'-4"

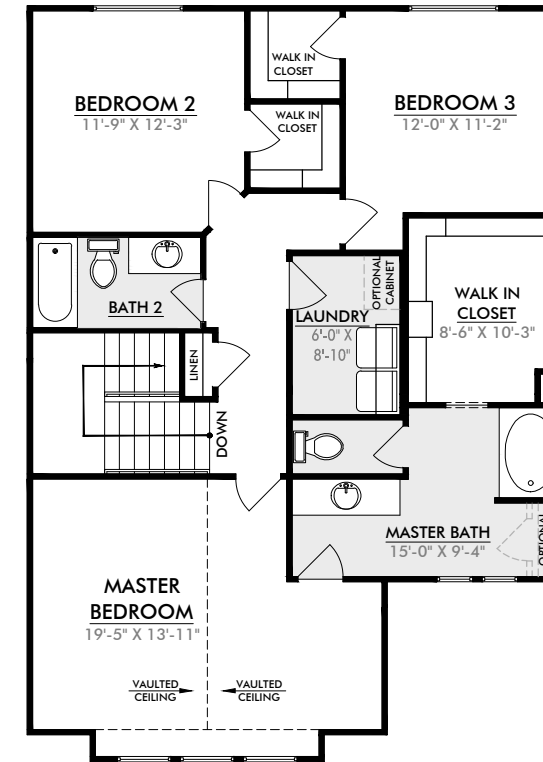


it all starts at
Home

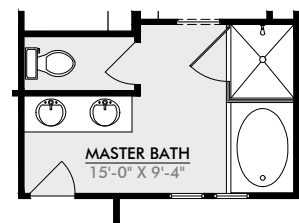
Main Level



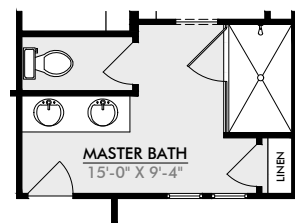
Second Level



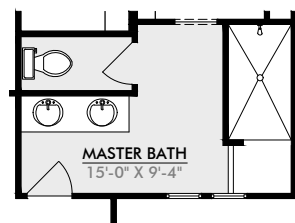
Options



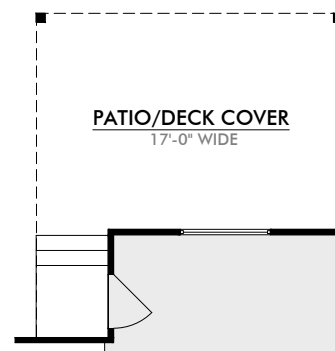
GRAND MASTER BATH OPTION



MASTER BATH OPTION 1



MASTER BATH OPTION 2



OPTIONAL PATIO OR DECK COVER

Notes About Your New Home:

Agent Name: _____

Agent Phone: _____

Agent Email: _____
