



THE SUMAC

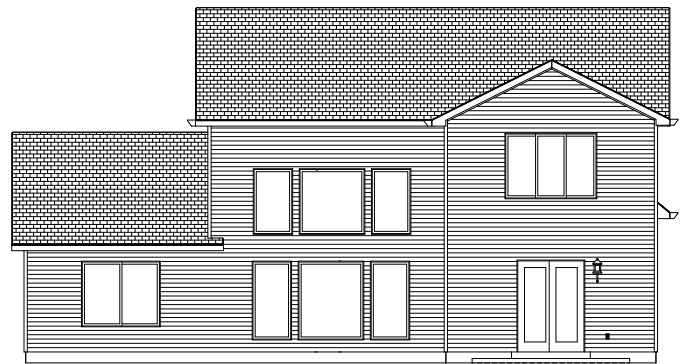
435.228.4702  
visionaryhomes.com



4-7 BEDROOMS | 2.5-4.5 BATHS | 2-3 CAR GARAGE  
2,548-3,911 FINISHED SQ. FT.



FRONT ELEVATION



REAR ELEVATION

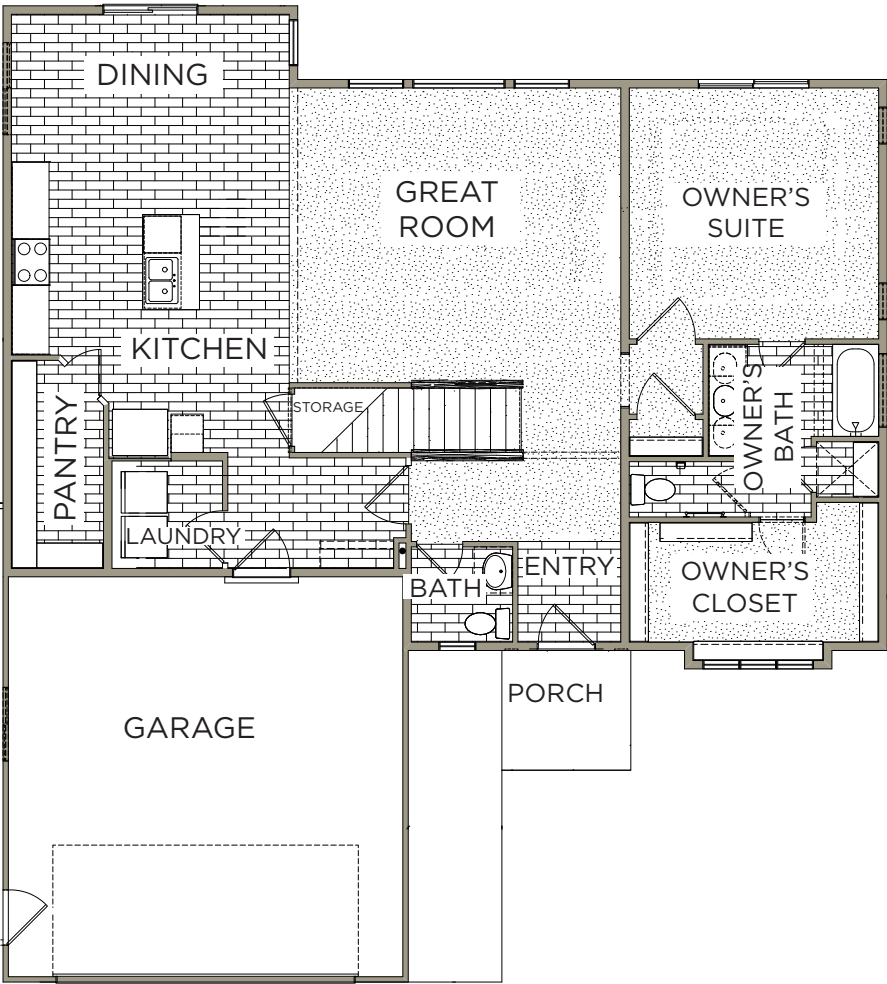
*\*Visionary Homes reserves the right to change specifications without notice.  
Approximate sq. footage and options shown in plan may not be included in base price.*

SCAN FOR MORE INFO  
435.228.4702  
visionaryhomes.com



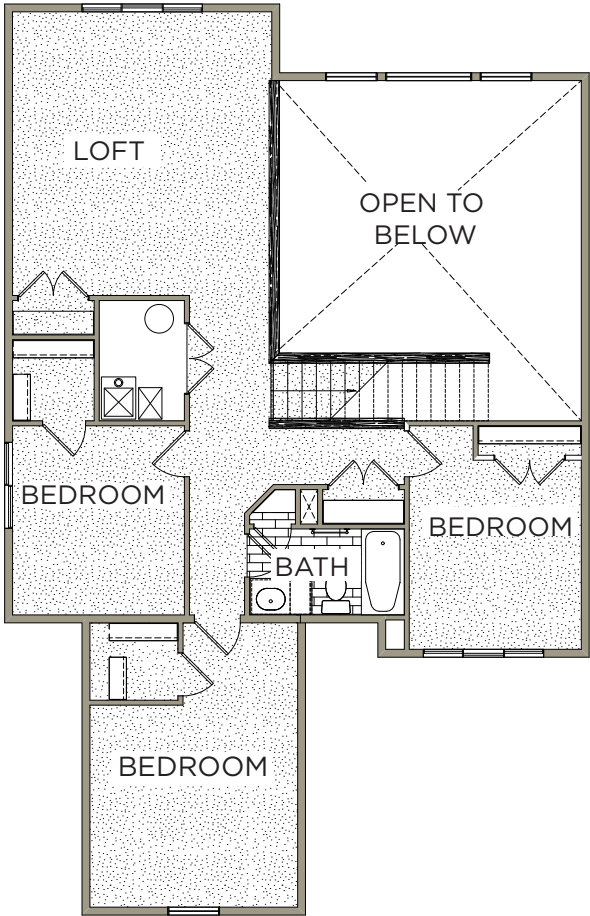
MAIN LEVEL

1,473 SQ. FT.



UPPER LEVEL

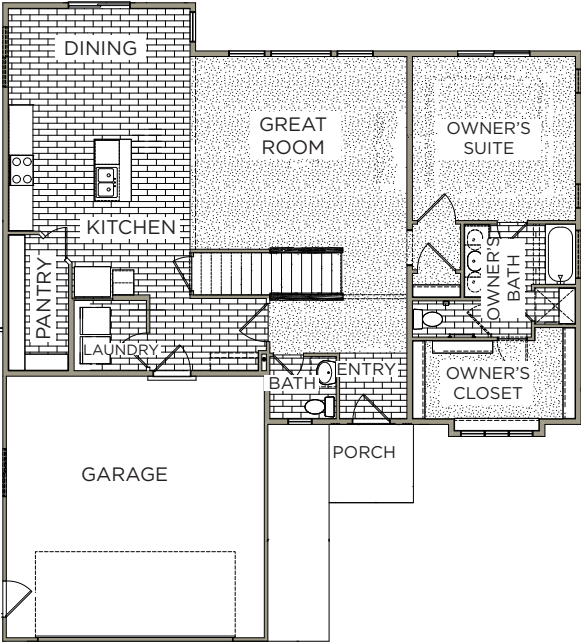
1,075 SQ. FT.



OPTIONAL BASEMENT

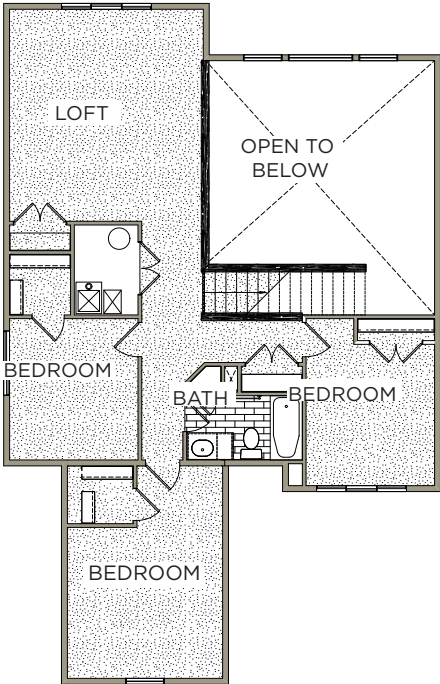
MAIN LEVEL

1,473 SQ. FT.



UPPER LEVEL

1,075 SQ. FT.



BASEMENT

1,363 SQ. FT.

