

TRIUMPH II

PLAN #2626-DT

CAREFREE HOMES
OPENING DOORS TO CAREFREE LIVING

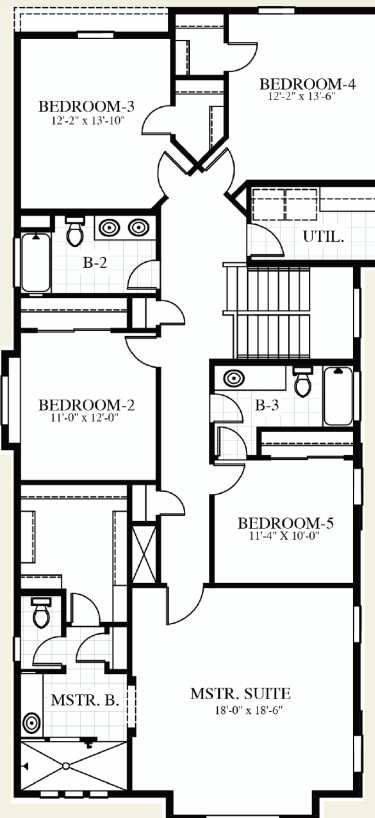
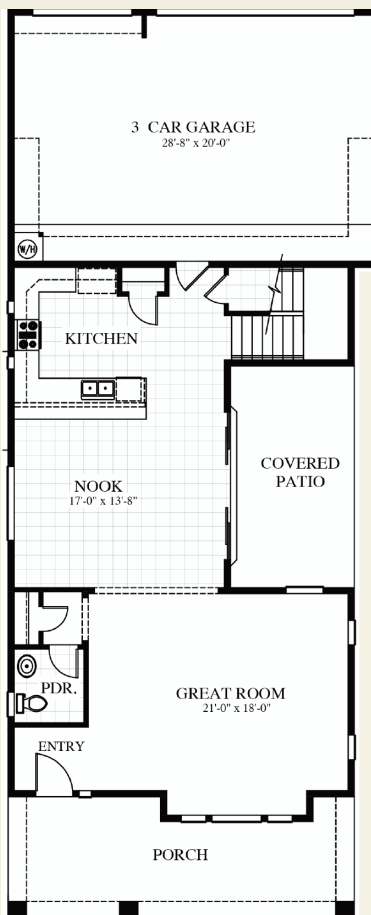


DESERT TERRITORIAL ELEVATION

AUBURN HILLS

AT DESERT COLOR

Desert Color living at its finest in this spacious 2,819 square foot home from CareFree Homes. The "Triumph II" has 5 large bedrooms, 2.5 bathrooms, inviting great room, 3 car-garage with built in shelving and epoxy floors. 9' ceilings throughout, 2x6 construction, 2-10 warranty, high efficiency windows, granite counters, GE stainless appliances, 12' glass patio door, covered side patio and extensive front porch.



CareFreeHomes.com



Colin Dockstader | 435-619-4609

Craig Lefevre | 435-619-7473

Britt Snow | 406-480-2771

DesertColor@CareFreeHome.com

Marketed by:

REALTYONEGROUP
GOLDMARK



DESERT COLOR

In a continuing effort to improve our product, CareFree Homes reserve the right to make changes or modifications to floor plans, specifications, materials, features and colors without notice. Window styles, availability, sizes and locations as well as ceiling heights and vaults and livable square footage will vary with choice of exterior elevations. All floor plans and lot square footages are approximate only. Total plan square footage calculations are from the outside of exterior walls and include interior partition walls. Optional features may be included at additional costs and are subject to construction cutoff dates. Lot premiums and HOA fees may apply. All maps, plans, landscaping and elevation renderings are artists' conceptions. This presentation constitutes intellectual property of CareFree Homes. Any copying, reproduction or use of this information without the written authorization of CareFree Homes is strictly prohibited. Prices and offers are subject to change without notice. Consult a CareFree Homes Representative for additional information. 9.14.20