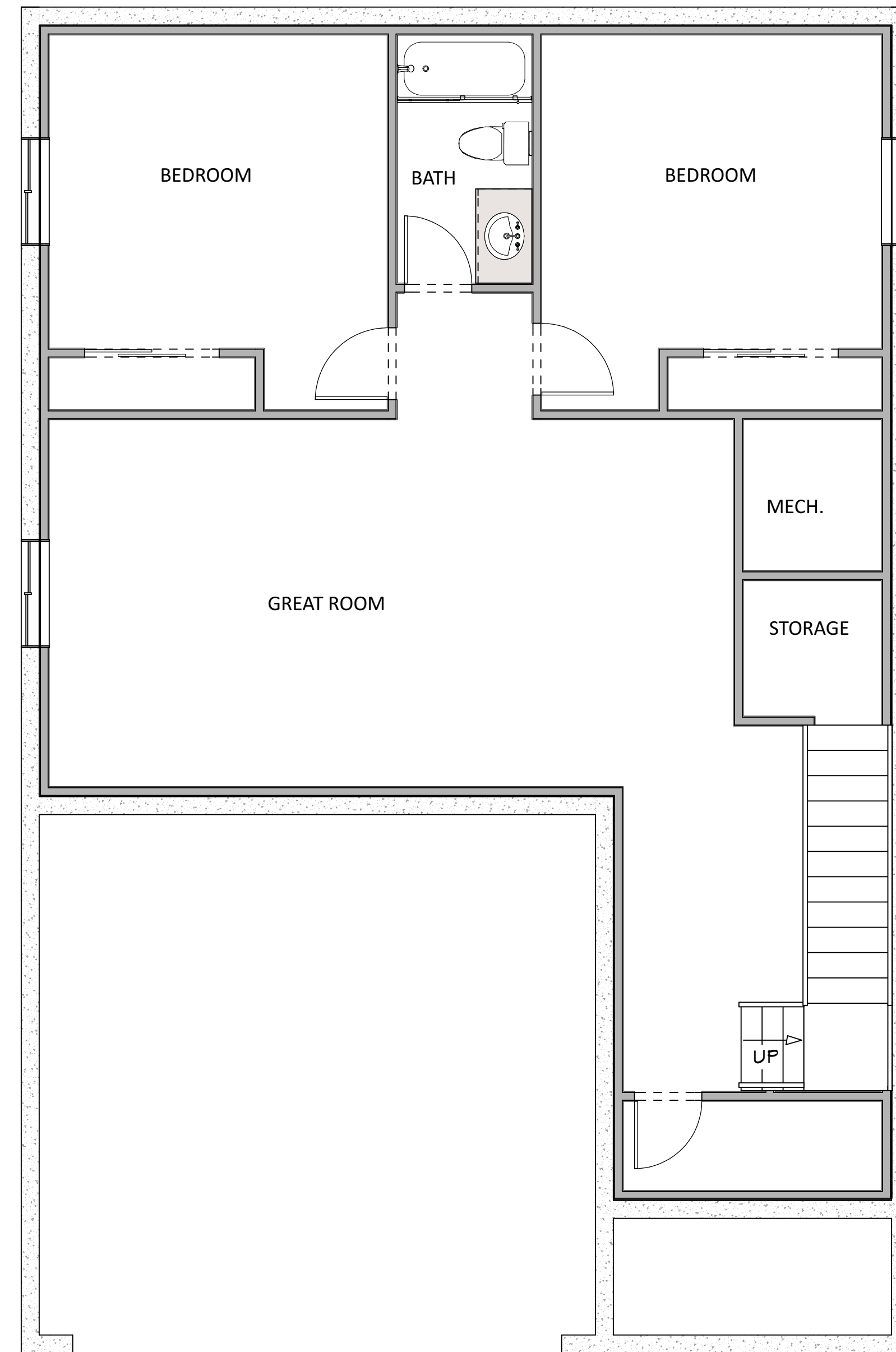
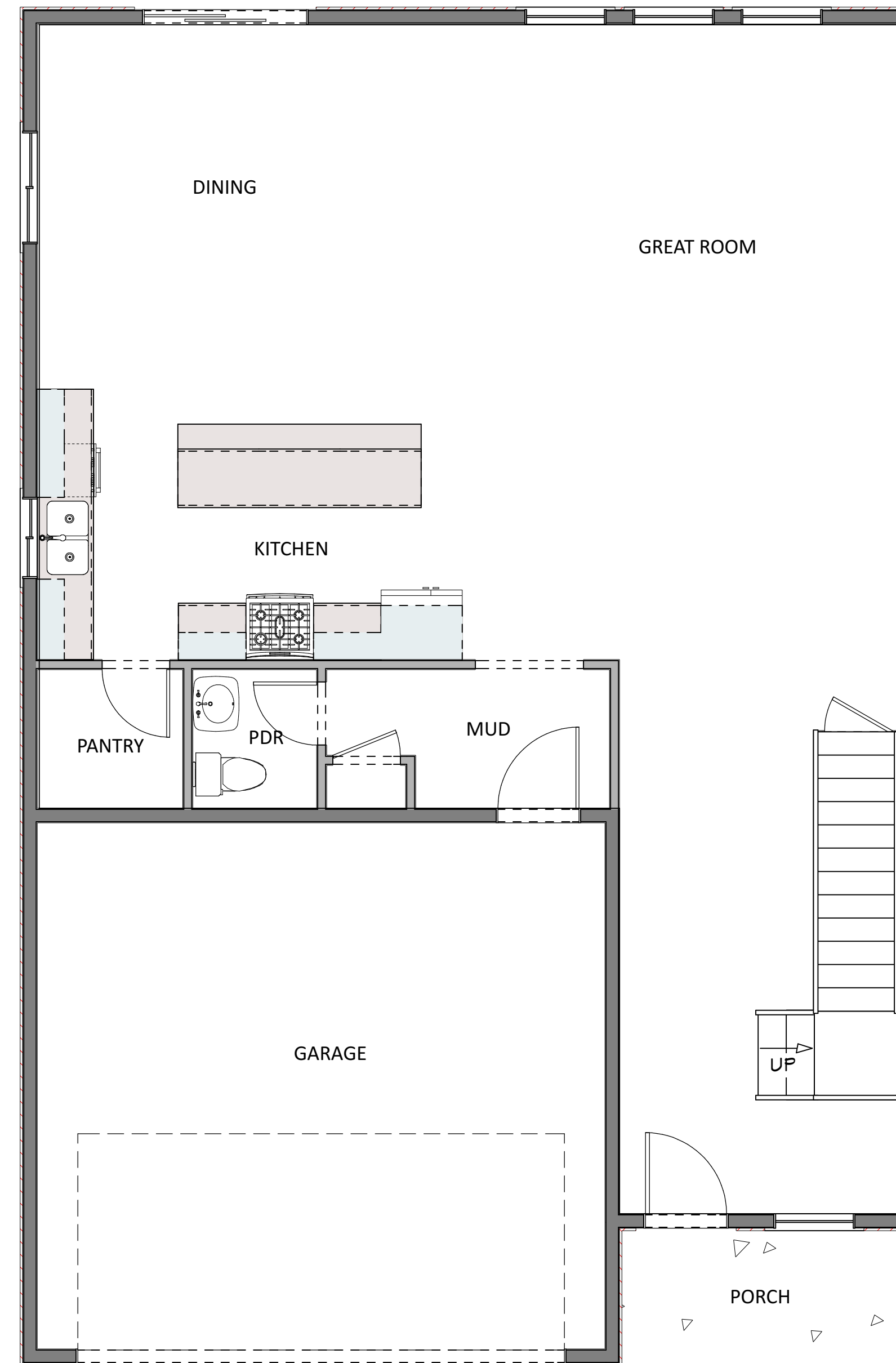


MAPLE

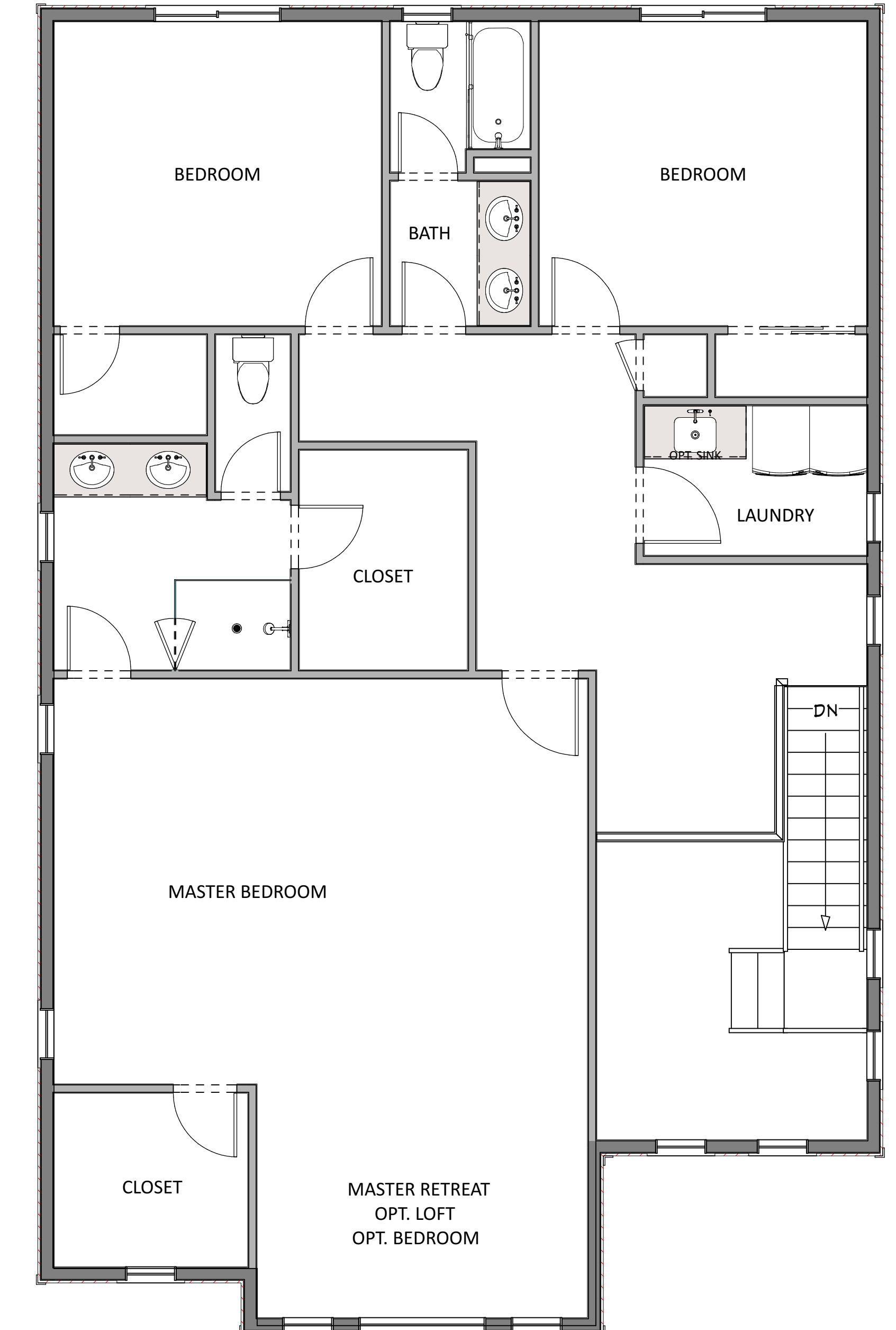
3,539 Total SF | 3 - 5 Bed | 2.5 Bathrooms | 2 Car Garage



OPT. FINISHED BASEMENT



MAIN FLOOR



SECOND FLOOR

*Floorplans and renderings are conceptual drawings and may vary from actual plans and homes as built. Options and features may not be available on all homes and are subject to change without notice. Dimensions are approximate. Actual homes may vary from photos and/or drawings which may show upgrades and may not represent the lowest-priced homes in the community.