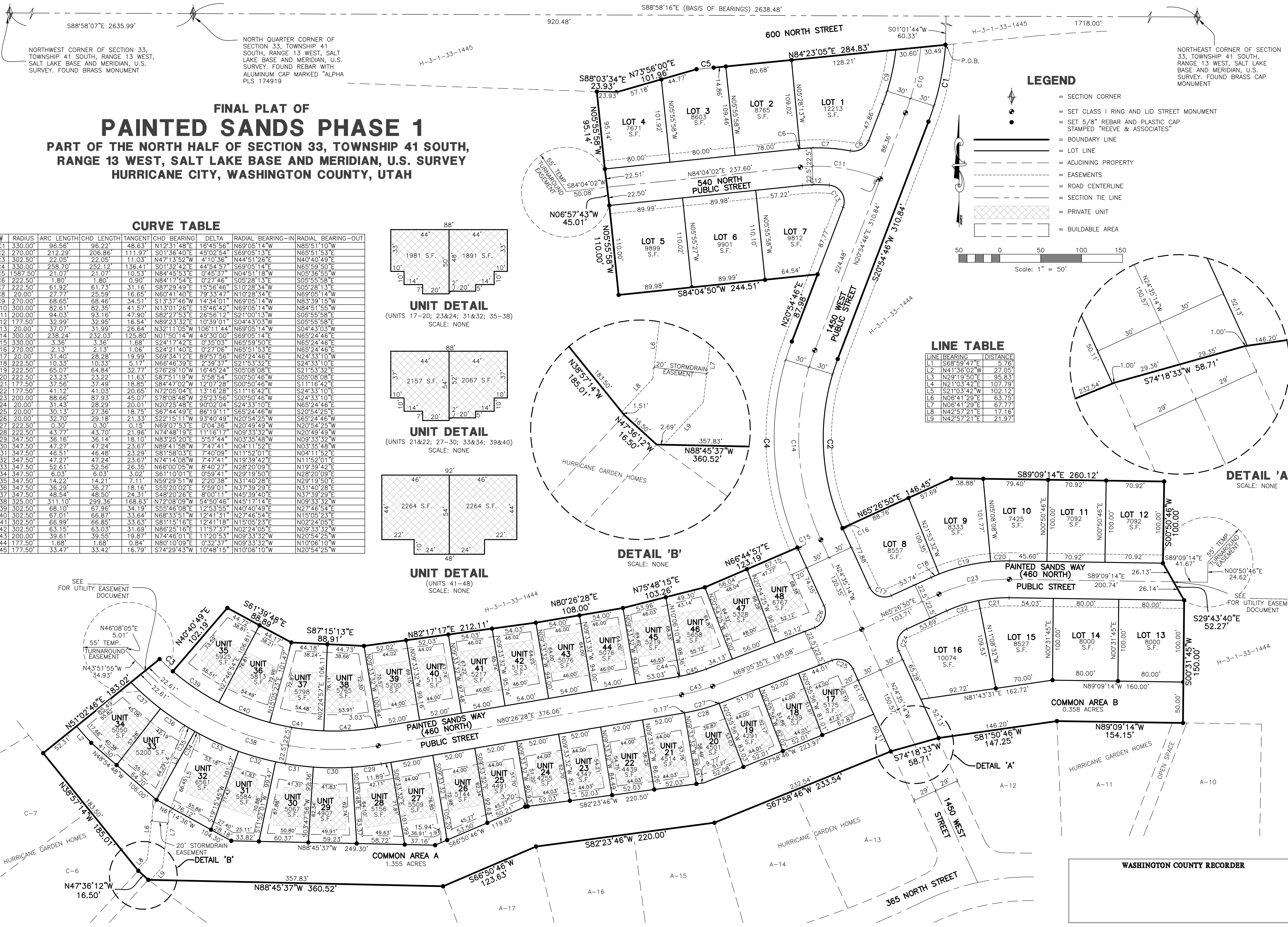


Table with 2 columns: REVISIONS, DESCRIPTION. Includes a grid for tracking changes.

PAINTED SANDS PHASE 1 HURRICANE CITY, WASHINGTON COUNTY, UTAH FINAL PLAT

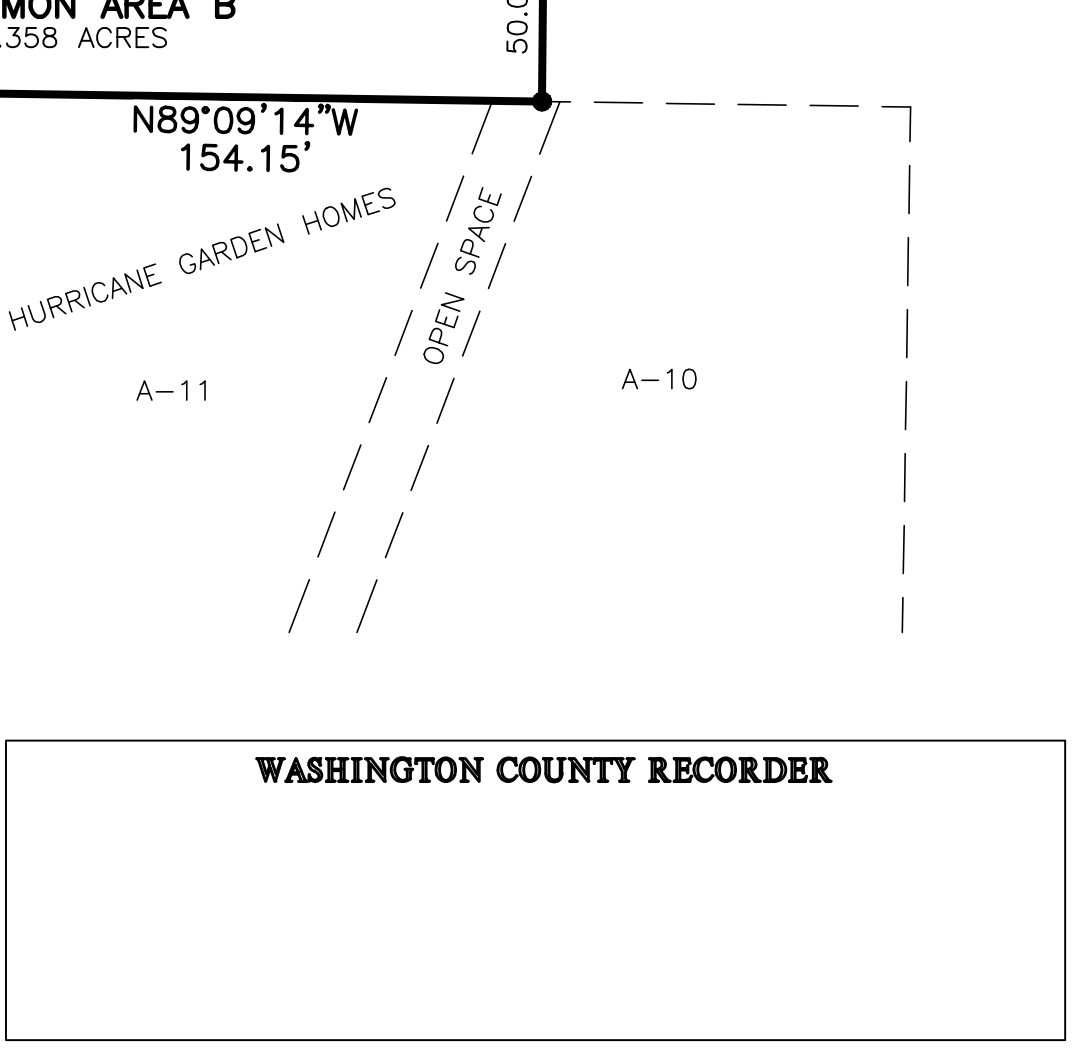
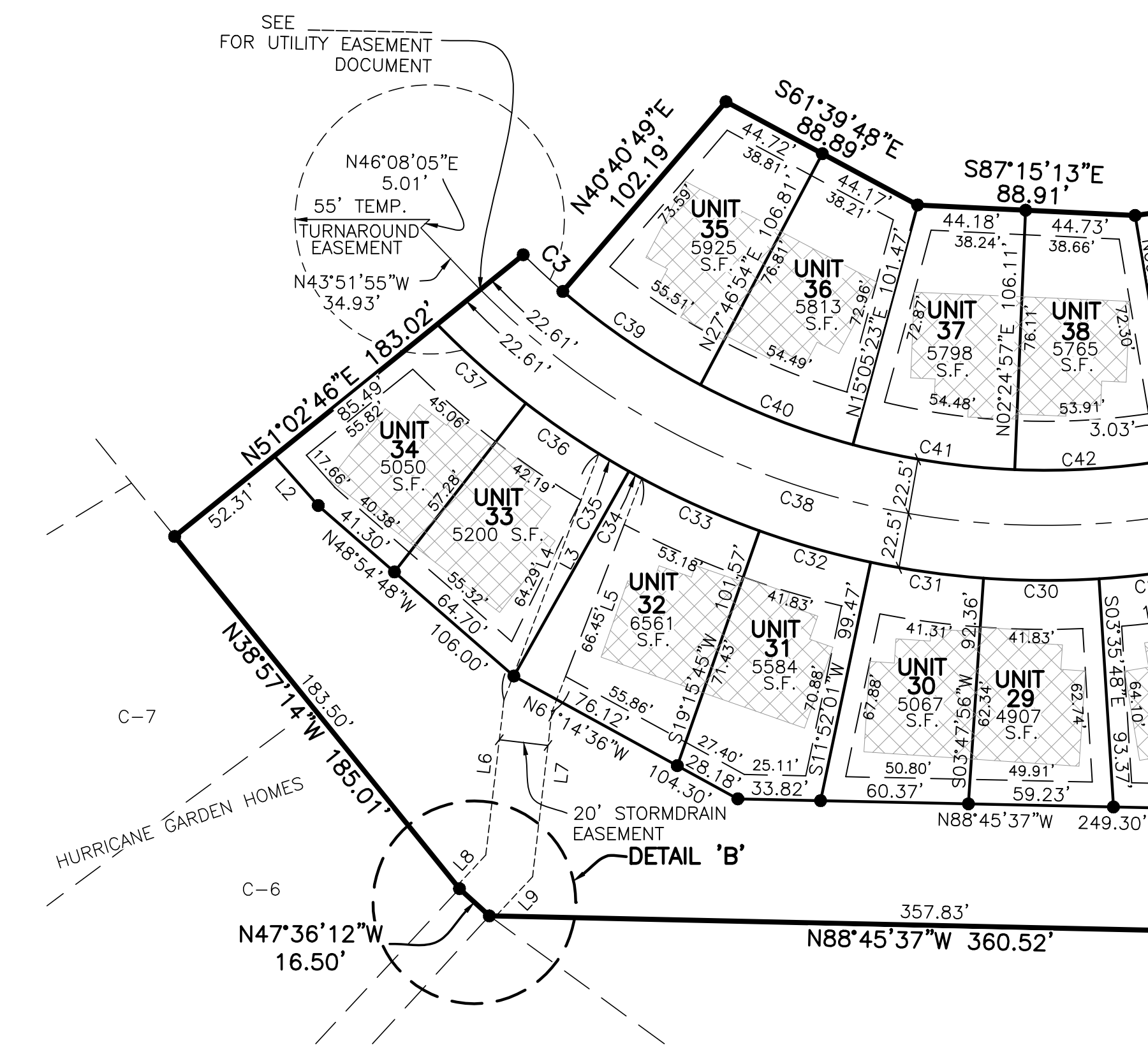
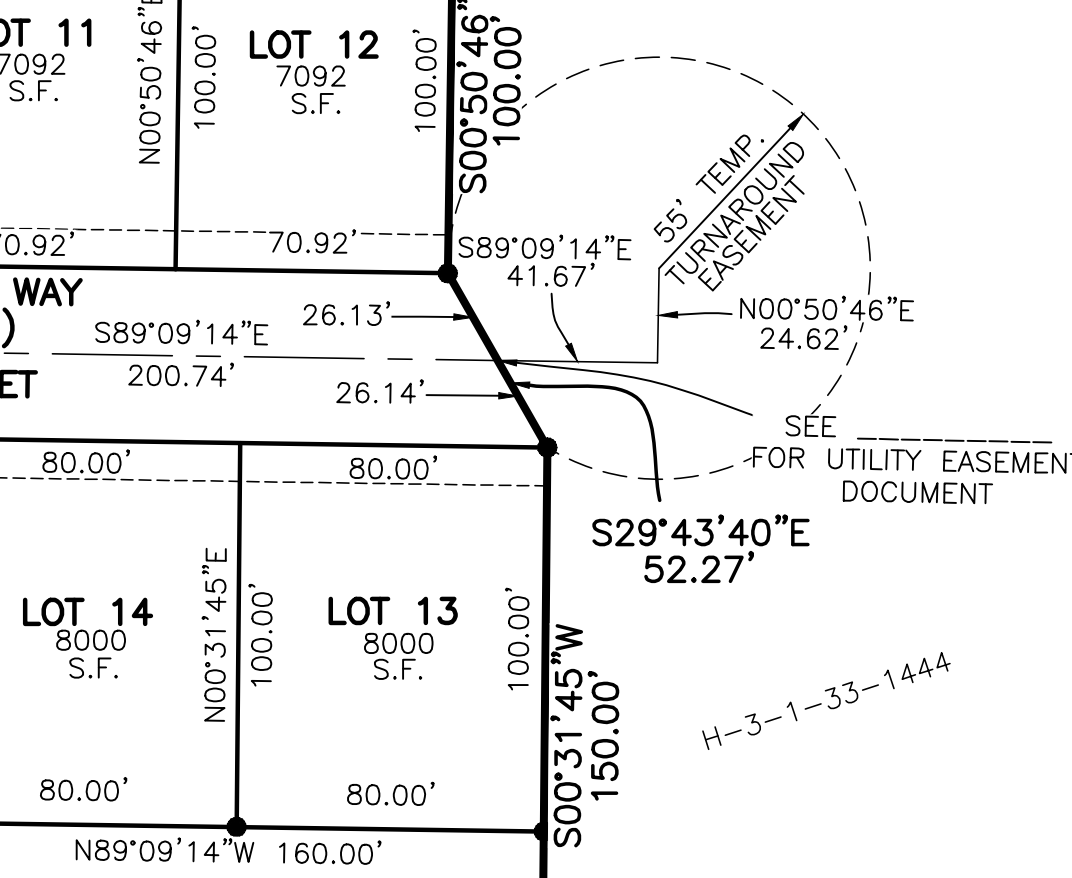
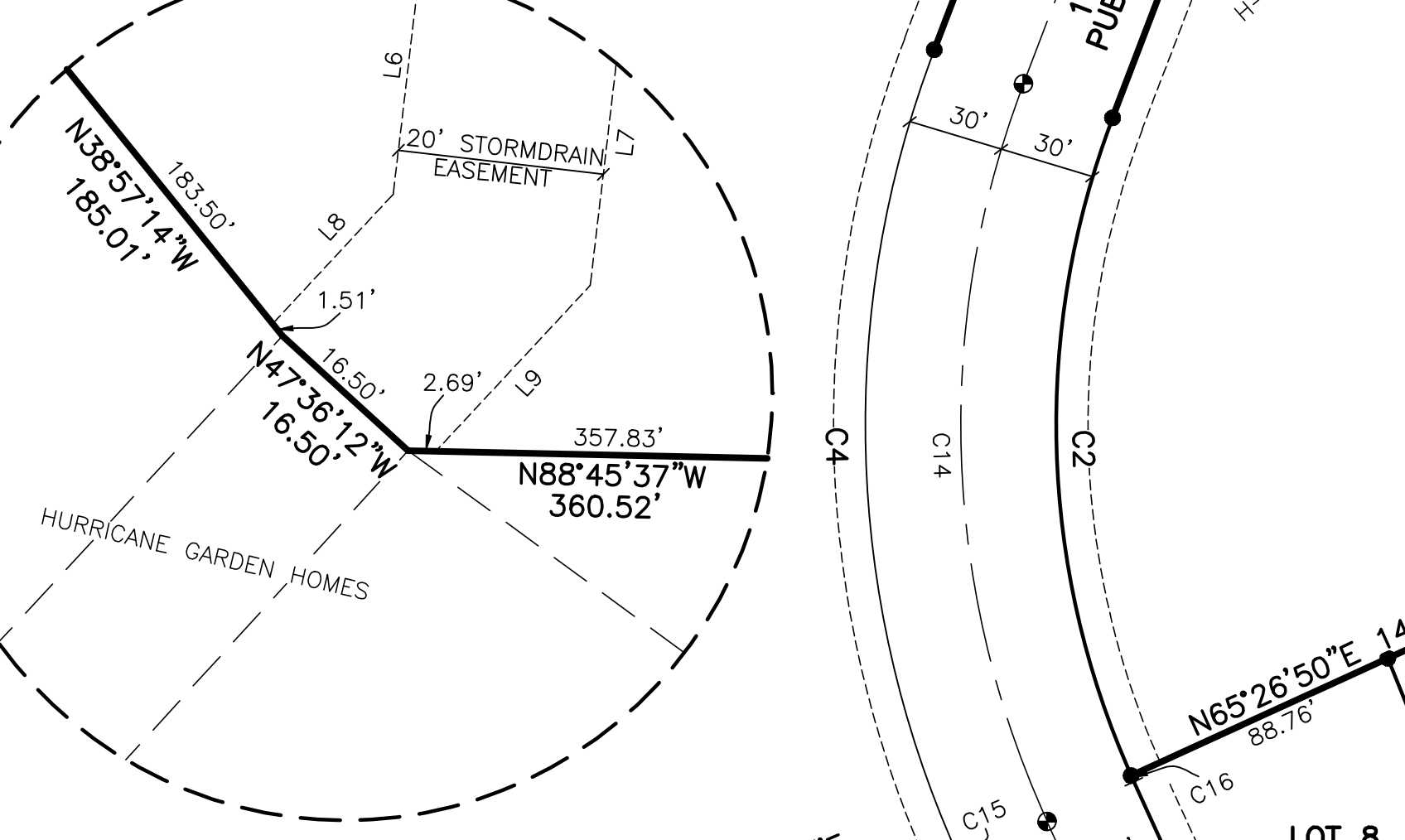
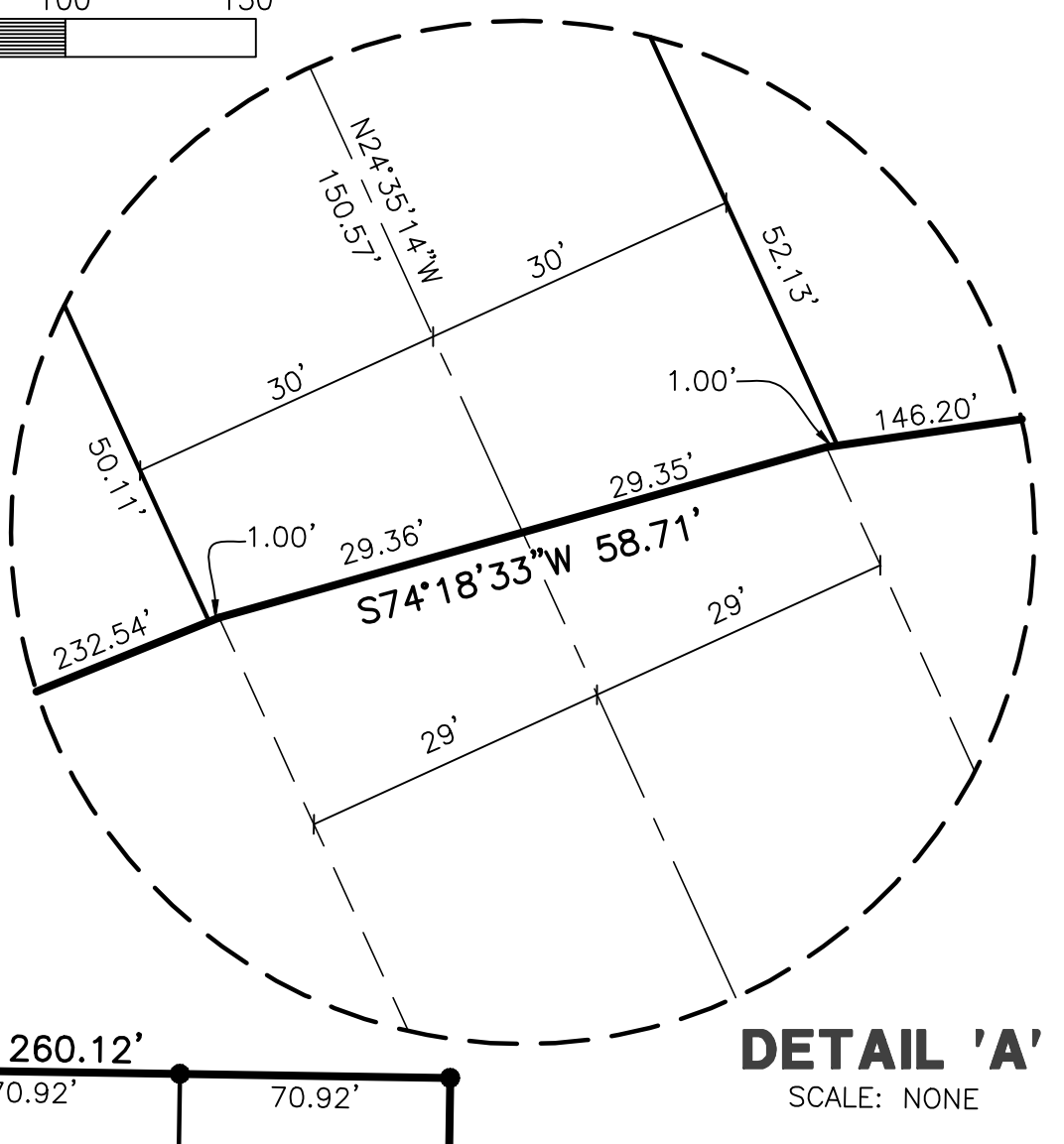
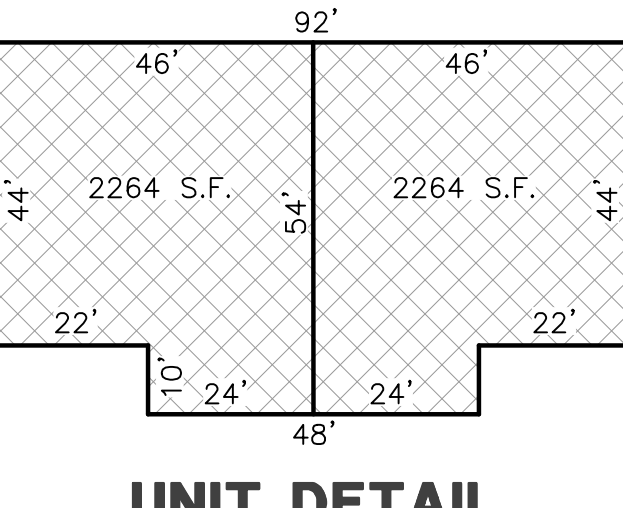
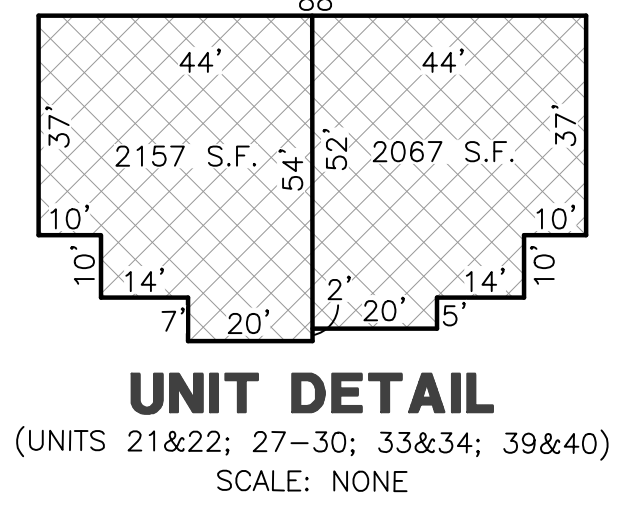
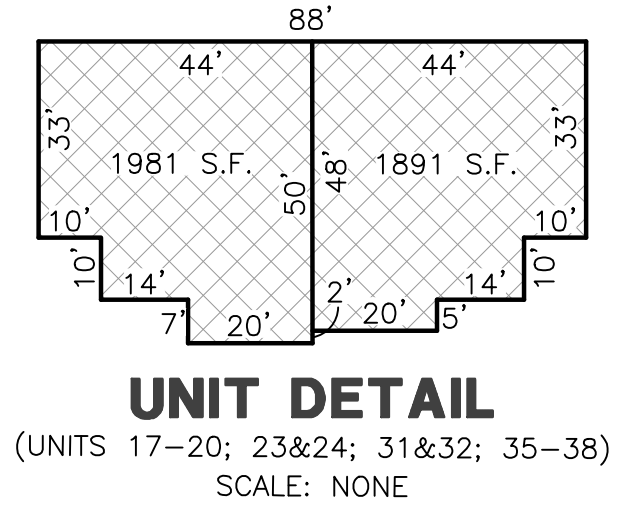
Project Info. Surveyor: T. HATCH Drafter: E. ROCHE Begin Date: 09-14-16 Name: PAINTED SANDS PHASE 1 Scale: 1"=50' Checked: Number: 6626-03



FINAL PLAT OF PAINTED SANDS PHASE 1 PART OF THE NORTH HALF OF SECTION 33, TOWNSHIP 41 SOUTH, RANGE 13 WEST, SALT LAKE BASE AND MERIDIAN, U.S. SURVEY HURRICANE CITY, WASHINGTON COUNTY, UTAH

CURVE TABLE with columns: #, RADIUS, ARC LENGTH, CHD LENGTH, TANGENT, CHD BEARING, DELTA, RADIAL BEARING-IN, RADIAL BEARING-OUT. Lists 45 curve data points.

LINE TABLE with columns: LINE, BEARING, DISTANCE. Lists 9 line data points.



WASHINGTON COUNTY RECORDER