

Notes About Your New Home:

Agent Name: _____

Agent Phone: _____

Agent Email: _____



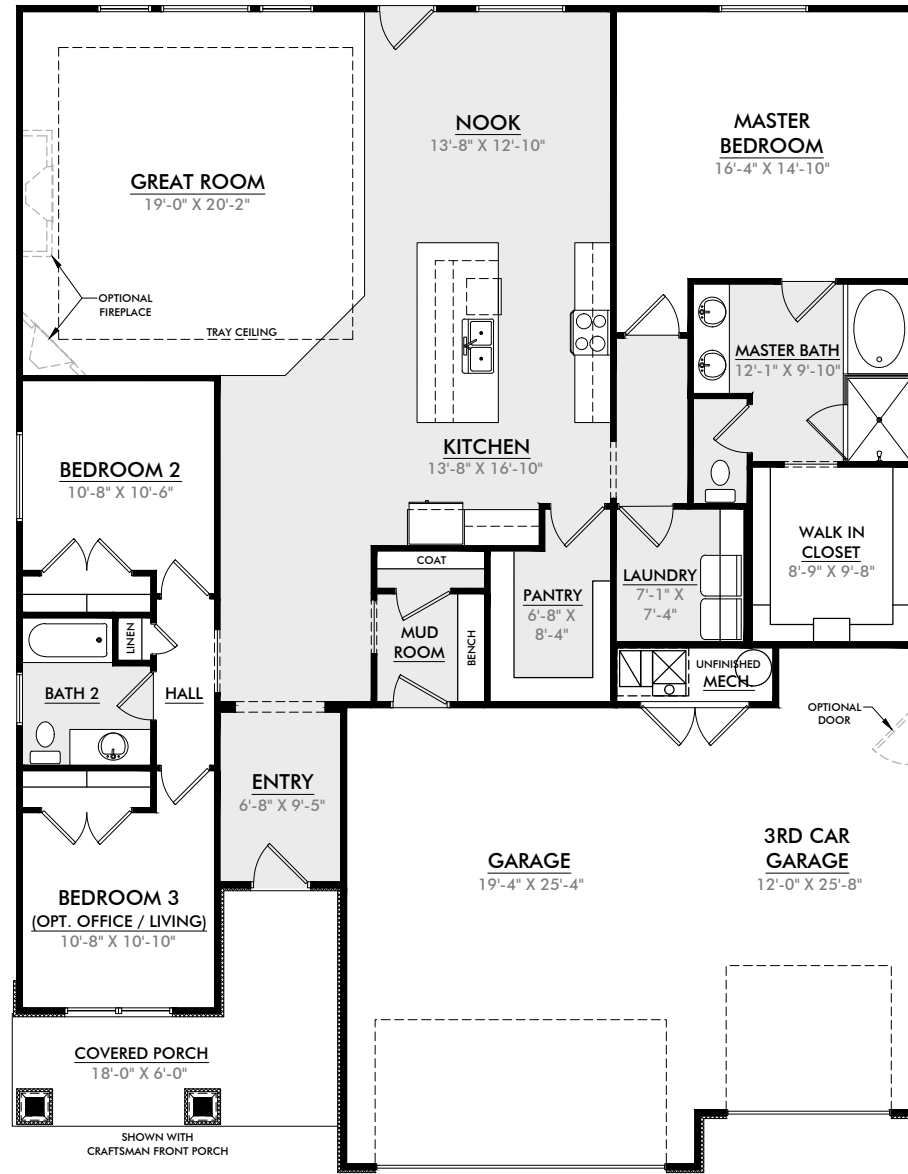

SEE THE 3D TOUR OF THE GREENFIELD
www.NilsonHomes.com/GREENFIELD

Nilson Homes has a wide variety of home designs, model homes and communities throughout Weber and Davis Counties. Please contact your New Home Sales Representative today to find out more about building your future home.



TOTAL SQ. FT.:	2,187
TOTAL FINISHED SQ. FT.:	2,161
TOTAL UNFINISHED SQ. FT.:	26
BED: (FINISHED/TOTAL)	3 BATH: (FINISHED/TOTAL) 2
WIDTH:	50'-0" DEPTH: 64'-10"

Main Level



Options

