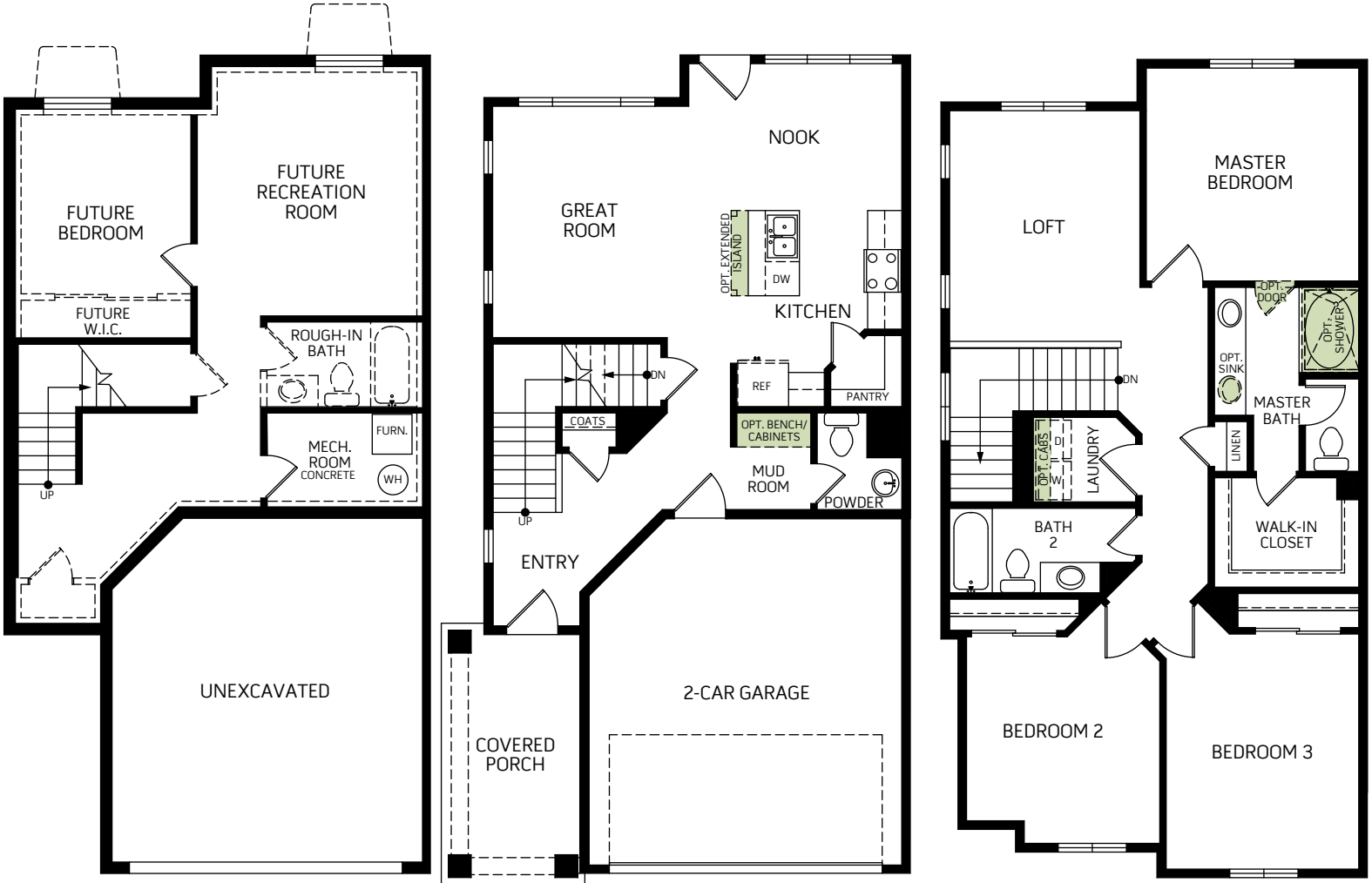


Harvard

Two-story • 1,779 Finished Sq. Ft. • 2,411 Total Sq. Ft. • 3-4 Bedrooms • 2.5-3.5 Baths • Spacious Great Room • Walk-In Closet • 2 Car Garage



BASEMENT
632 Sq. Ft.

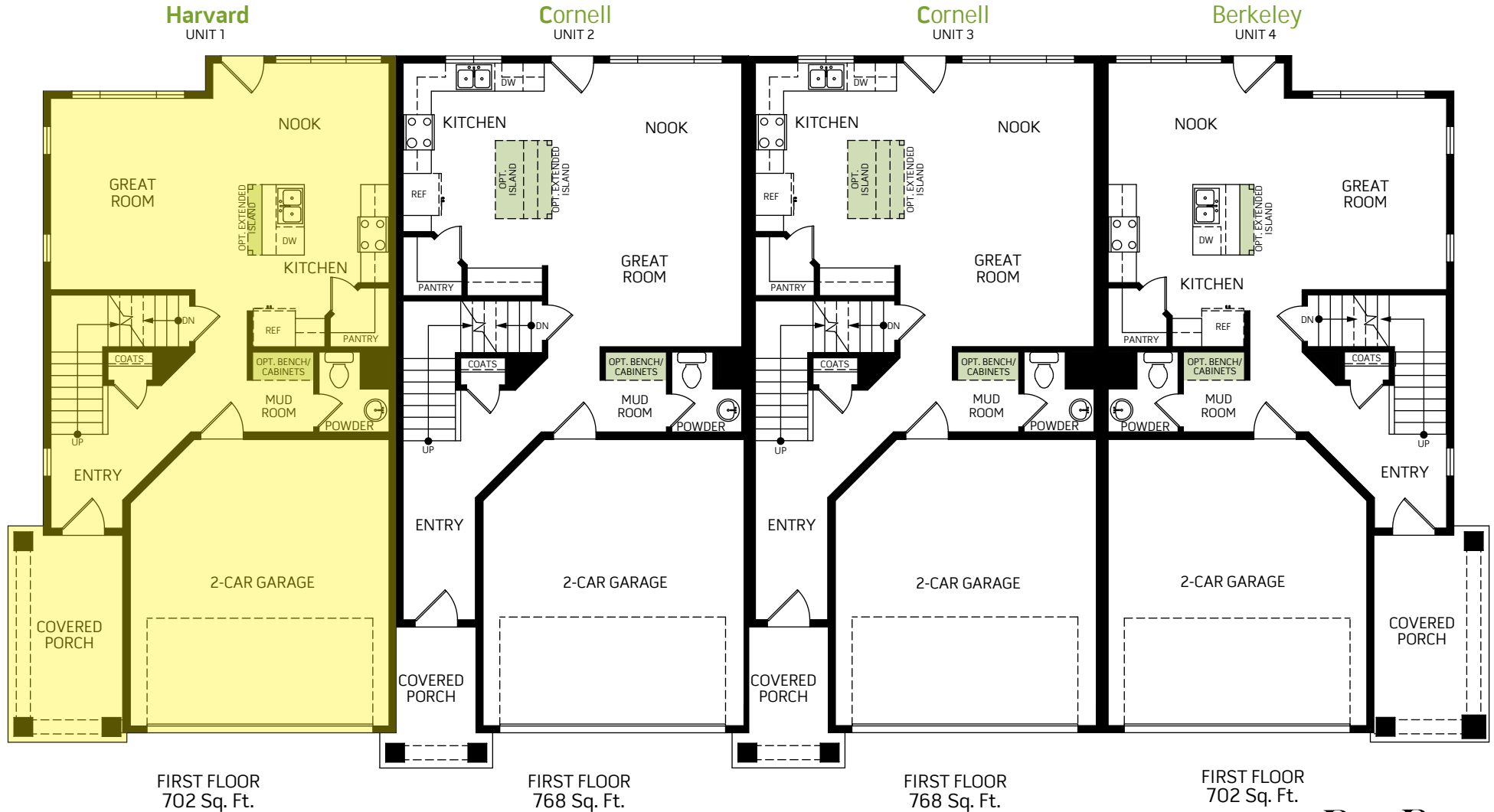
FIRST FLOOR
702 Sq. Ft.

SECOND FLOOR
1077 Sq. Ft.



Woodside Homes reserves the right to change elevations, specifications, materials and prices without notice. All square footages are approximate. Window location, porches, ceiling heights and room dimensions vary per elevation. The availability of certain options is subject to construction status and schedule. Optional features may be predetermined and included at additional cost on select homes. Renderings are artist's conception only. Rev. 12/18

Harvard



Woodside Homes reserves the right to change elevations, specifications, materials and prices without notice. All square footages are approximate. Window location, porches, ceiling heights and room dimensions vary per elevation. The availability of certain options is subject to construction status and schedule. Optional features may be predetermined and included at additional cost on select homes. Renderings are artist's conception only. Rev. 12/18

DAY RANCH



WoodsideHomes.com
15168 S. Cattle Dr. Bluffdale, UT 84065.