

MECHANICAL ROOM

30'6" X 23'5"

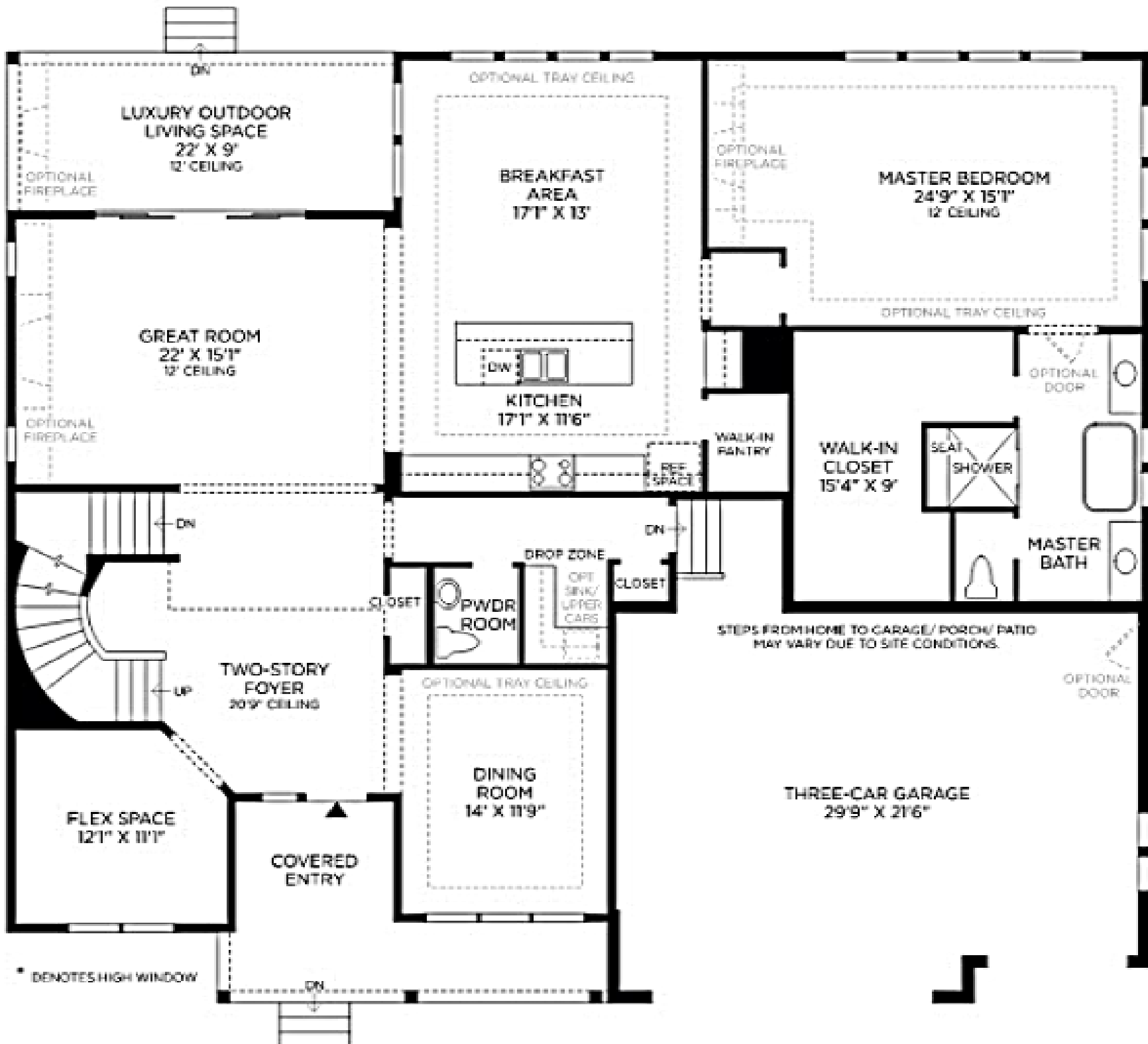
UNFINISHED BASEMENT
33'4" X 32'3"

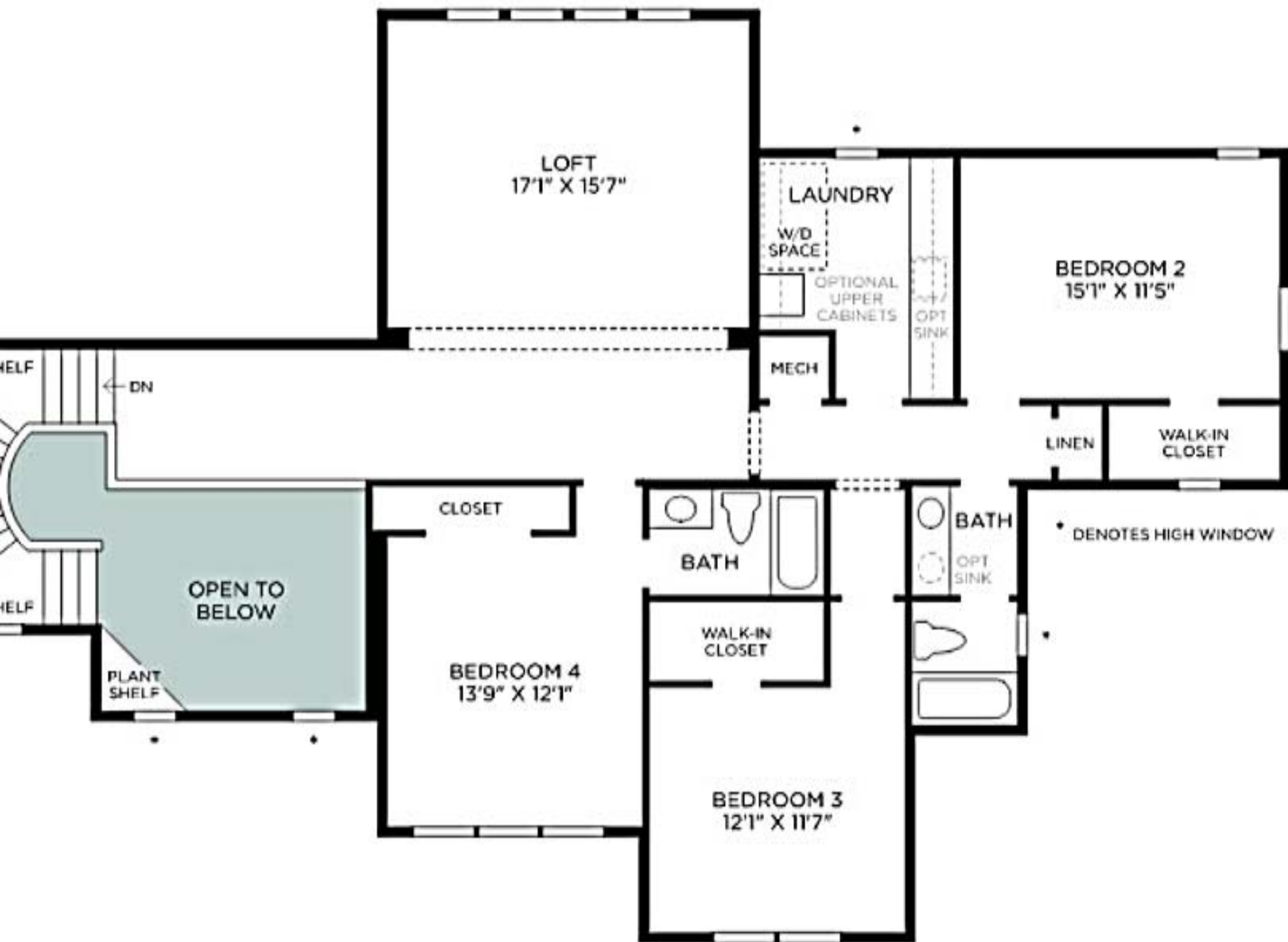
11'8" X 10'2"

UNFINISHED STORAGE
11' X 9'4"

11'4" X 7'

UP





LOFT
17'1" X 15'7"

LAUNDRY

W/D
SPACE

OPTIONAL
UPPER
CABINETS

OPT
SINK

BEDROOM 2
15'1" X 11'5"

MECH

LINEN

WALK-IN
CLOSET

• DENOTES HIGH WINDOW

BATH

OPT
SINK

BATH

WALK-IN
CLOSET

CLOSET

BEDROOM 4
13'9" X 12'1"

BEDROOM 3
12'1" X 11'7"

OPEN TO
BELOW

PLANT
SHELF

HEL

HEL

DN