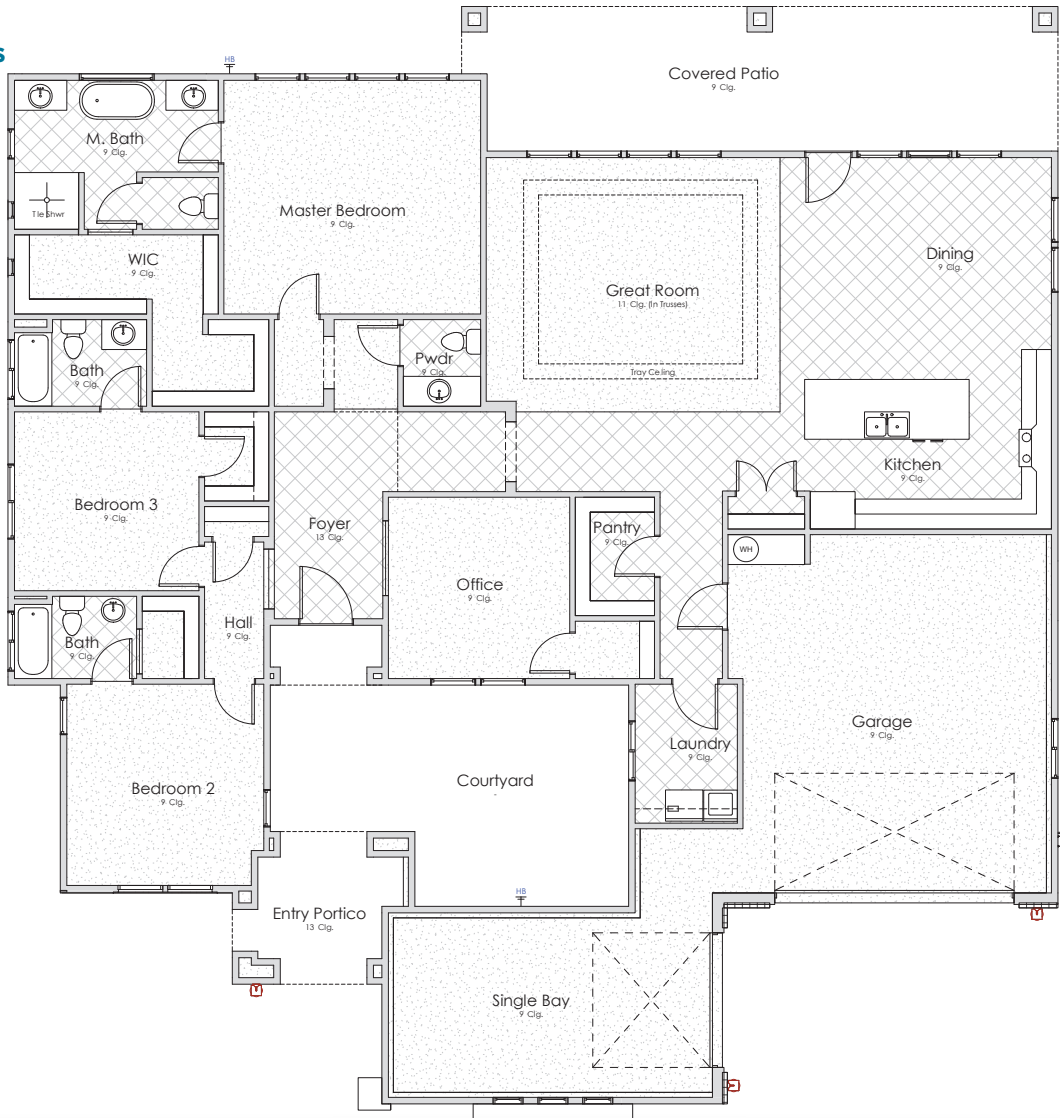


ESTATE SERIES

CRIMSON

Total: 2,663 Sq. Ft.
4 Bedrooms
3.5 Bathrooms
3-Car Garage



1.800.303.BRIO • LifeAtBRIO.com
230 W Brio Clubhouse Dr • Washington, UT 84780

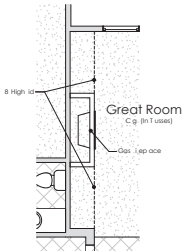
This drawing is conceptual only and for the convenience of reference. It should not be relied upon as a representation (express or implied), of final size, location or dimensions of any lot, building, amenity, common space, or any other use. The developer expressly reserves the right, without notice or consent, to make any modifications, revisions, and/or changes it deems desirable. This drawing may not be to scale and is for relative location purposes only. Final sizes, locations, dimensions or inclusions may vary with actual development and construction.



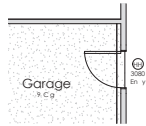
RESORT STYLE LIVING

COLE WEST
HOME

CRIMSON



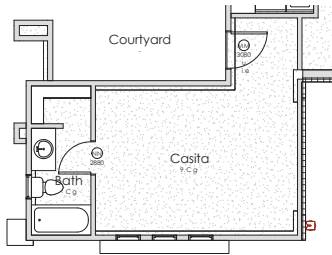
Fireplace
FFG101



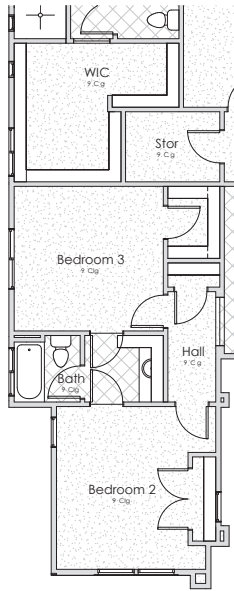
Man Door



Large Master Shower
FLT304



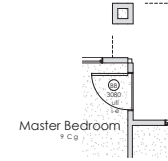
Casita
FLA101



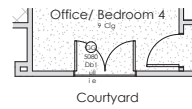
Jack and Jill Bath



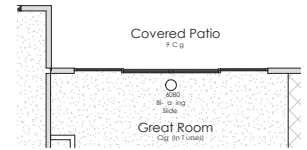
Laundry Cabinetry



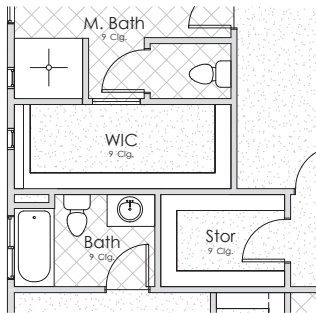
Door to Patio
FLT304



Courtyard Door
EDX002



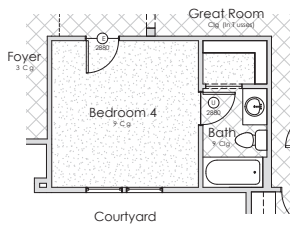
Multi Slide
EDS008



Storage



Office Door



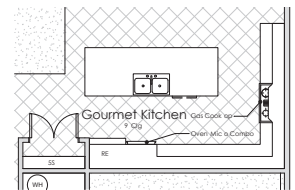
Bedroom 4



Office Door
SDD001



Extended Patio
FCP102



Gourmet Kitchen
CBT111

1.800.303.BRIO • LifeAtBRIO.com
230 W Brio Clubhouse Dr • Washington, UT 84780

This drawing is conceptual only and for the convenience of reference. It should not be relied upon as a representation (express or implied), of final size, location or dimensions of any lot, building, amenity, common space, or any other use. The developer expressly reserves the right, without notice or consent, to make any modifications, revisions, and/or changes it deems desirable. This drawing may not be to scale and is for relative location purposes only. Final sizes, locations, dimensions or inclusions may vary with actual development and construction.