



Traditional (standard)



Craftsman (optional)

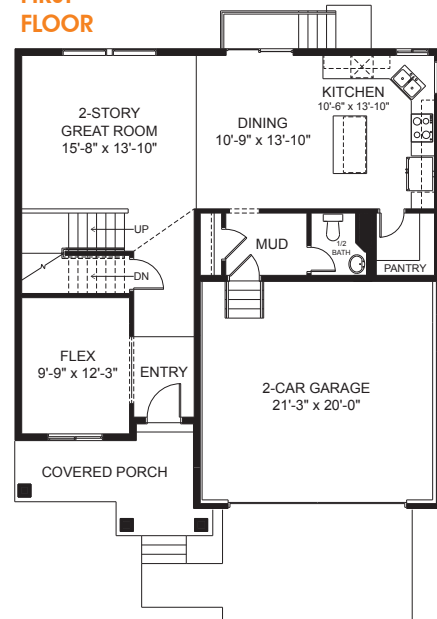


Farmhouse (optional)

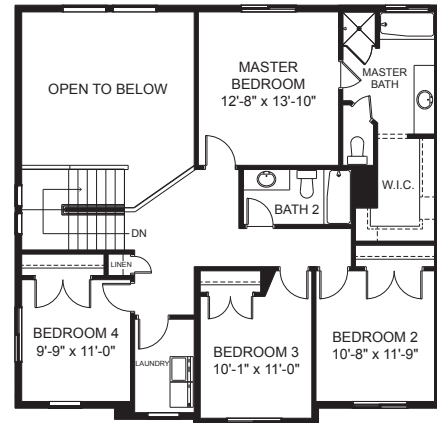


Prairie (optional)

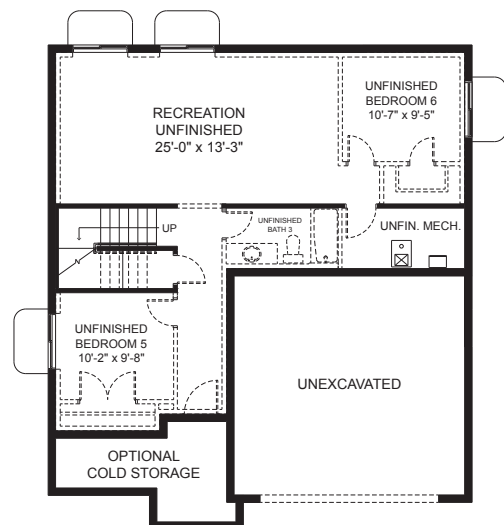
FIRST FLOOR



SECOND FLOOR



BASEMENT



First Floor	1,012 sq.ft.	Bedrooms	4
Second Floor	1,073 sq.ft.	(Total Possible)	(6)
Basement	1,020 sq.ft.	Bathrooms	2.5
Total Sq. Ft.	3,105 sq.ft.	(Total Possible)	(3.5)
Total Finished	2,085 sq.ft.	Width	38'-0"
		Depth	43'-5"