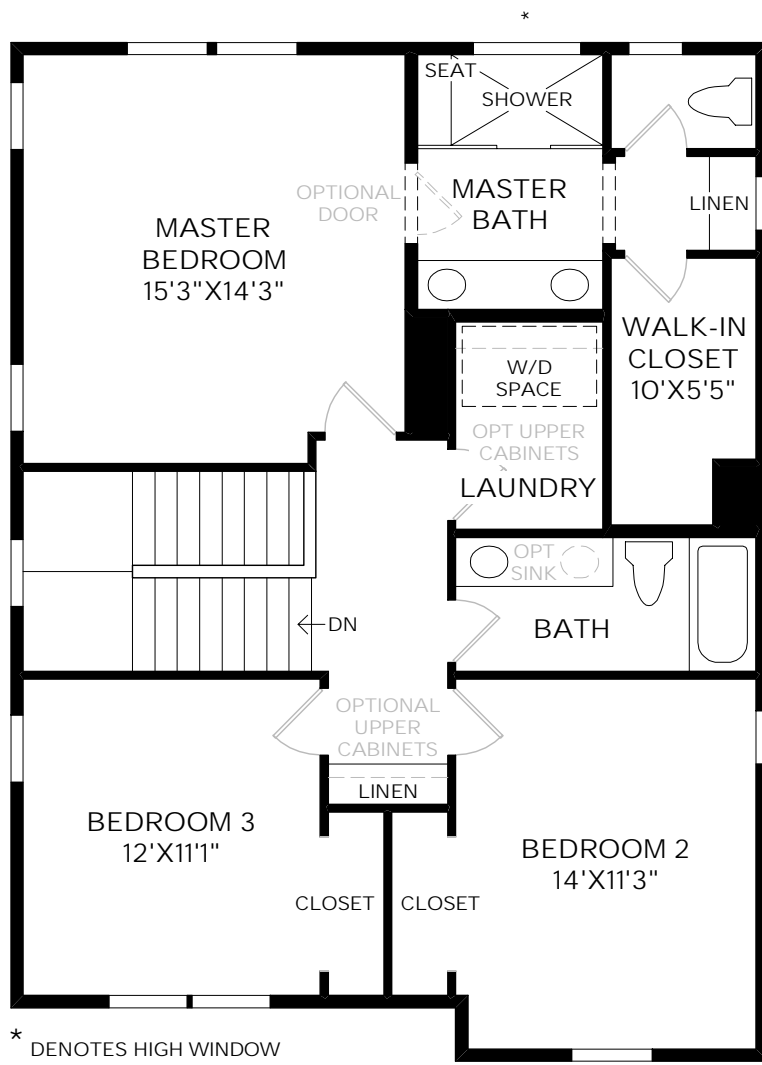


THE GOODWIN

FARMHOUSE EXTERIOR DESIGN

3 to 4 Bedrooms | 2½ to 3½ Baths | 2-Car Garage

DRAFT



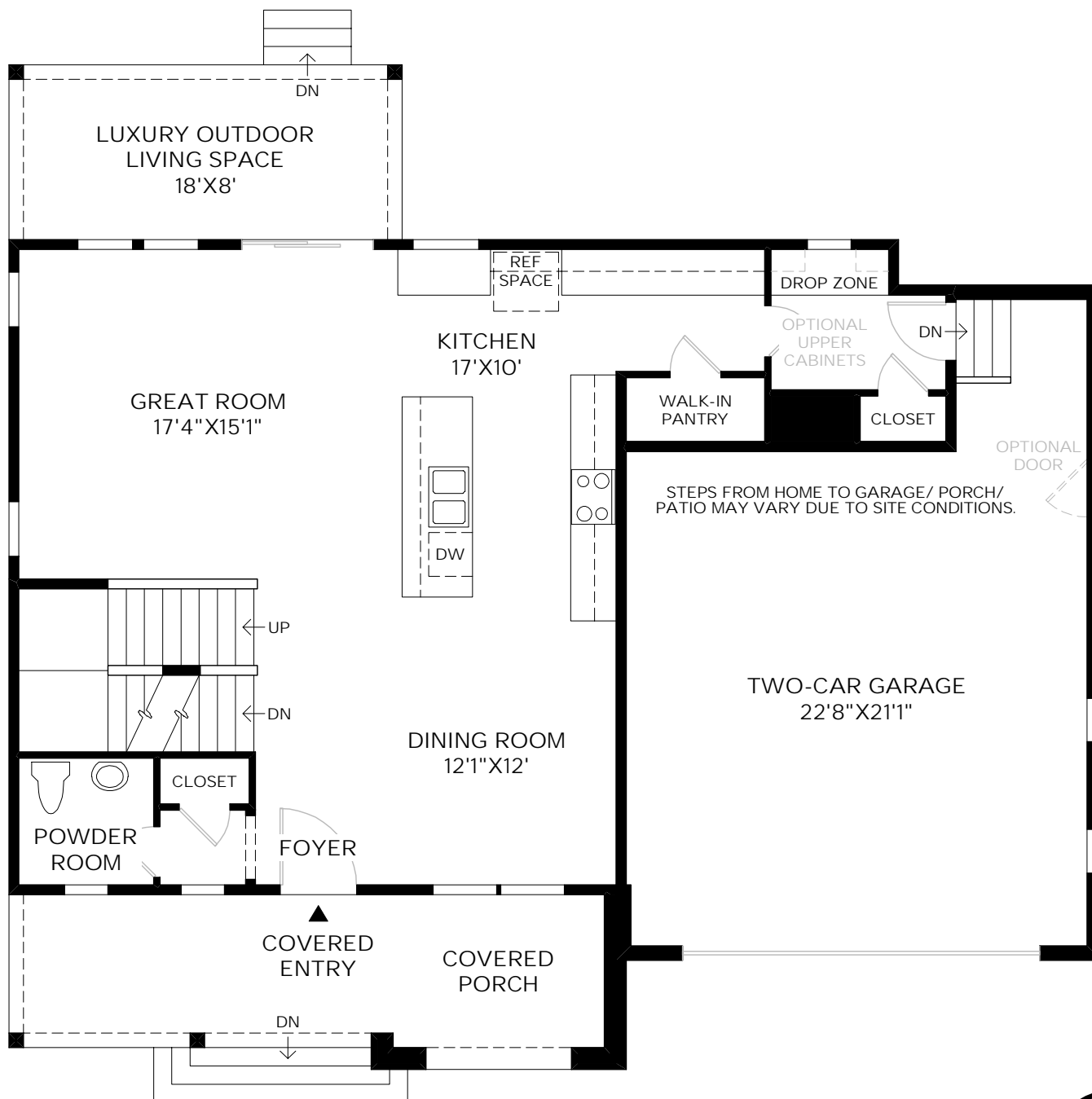
* DENOTES HIGH WINDOW

Second Floor

9' CEILING HEIGHT

Square Footage

Livable	1946 sf
Finished Basement	970 sf
TOTAL	2916 sf



First Floor

10' CEILING HEIGHT

DRAFT

Photographs, renderings, and floor plans are for representational purposes only and may not reflect the exact features or dimensions of your home. All dimensions are subject to field variations. Some design features and options shown may not be offered in your community. All options to be included in your home must be specified in an Exhibit B to the Agreement of Sale. All Toll Brothers floor plans and designs are copyrighted. All rights reserved and strictly enforced. This is not an offering where prohibited by law. Please consult our sales representative for details.