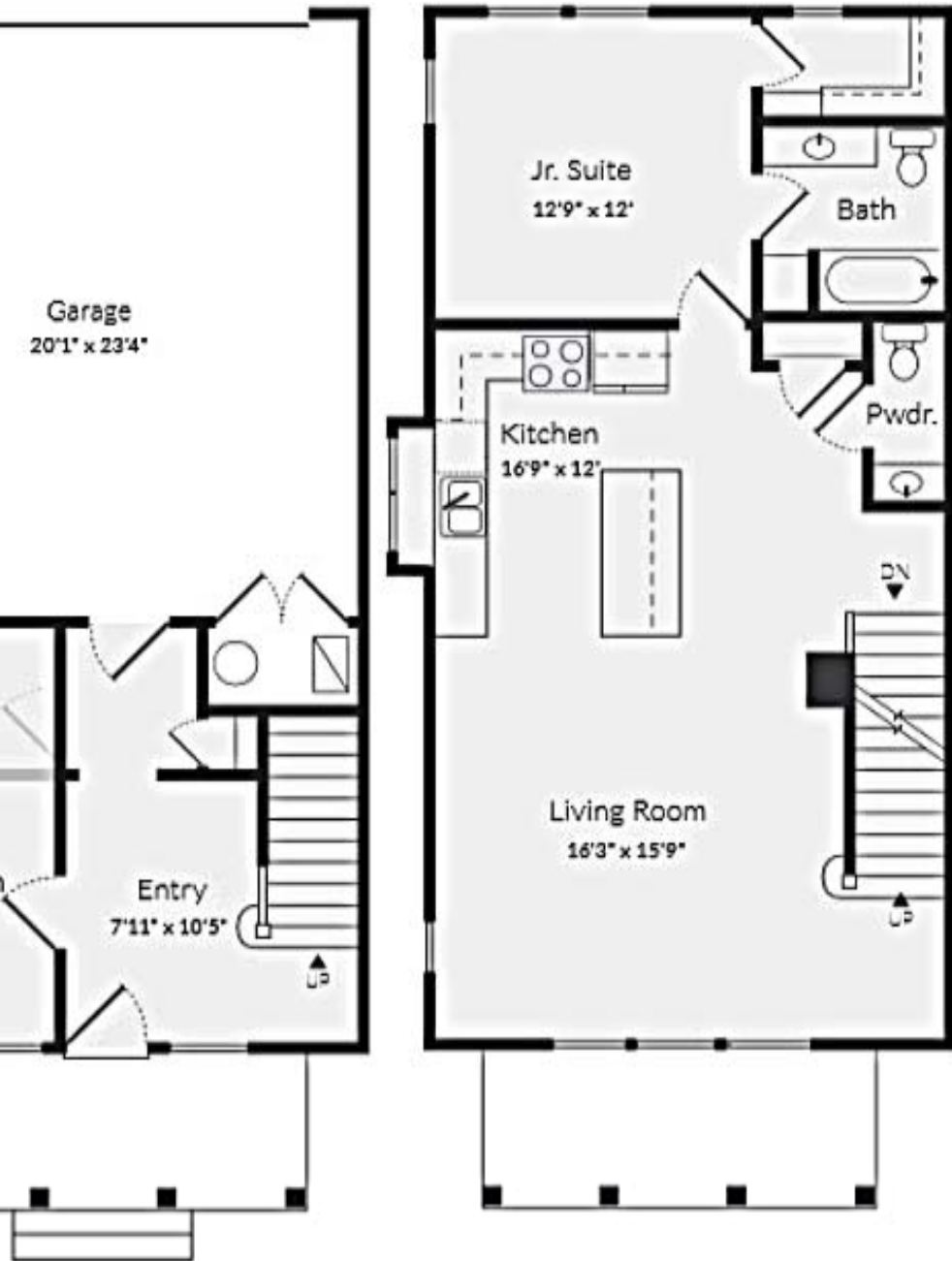
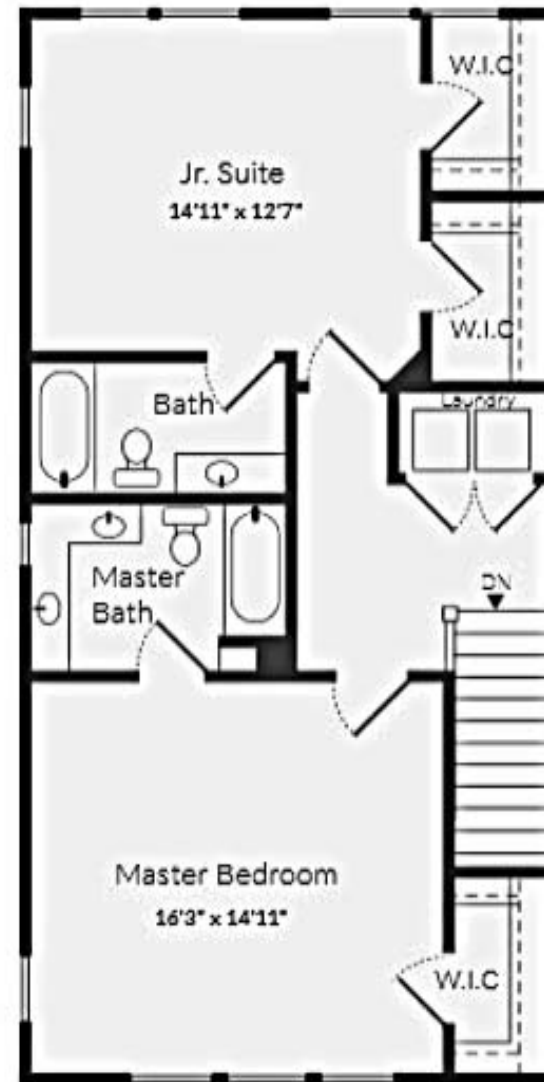


Second



Third



Square Footage:

Level 1 = 359

Level 2 = 866

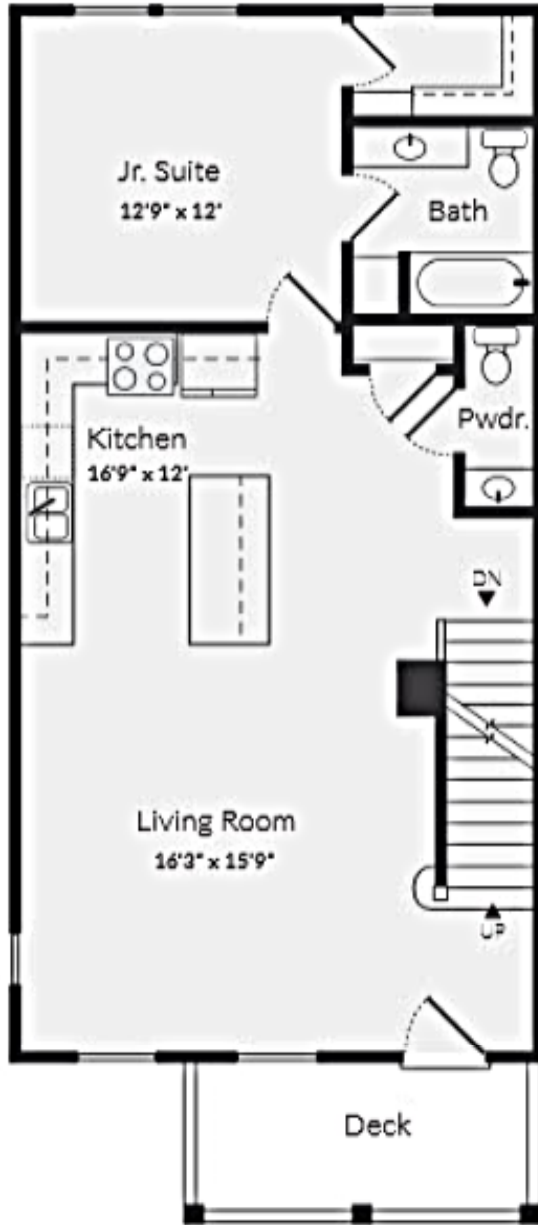
Level 3 = 855

TOTAL = 2,080

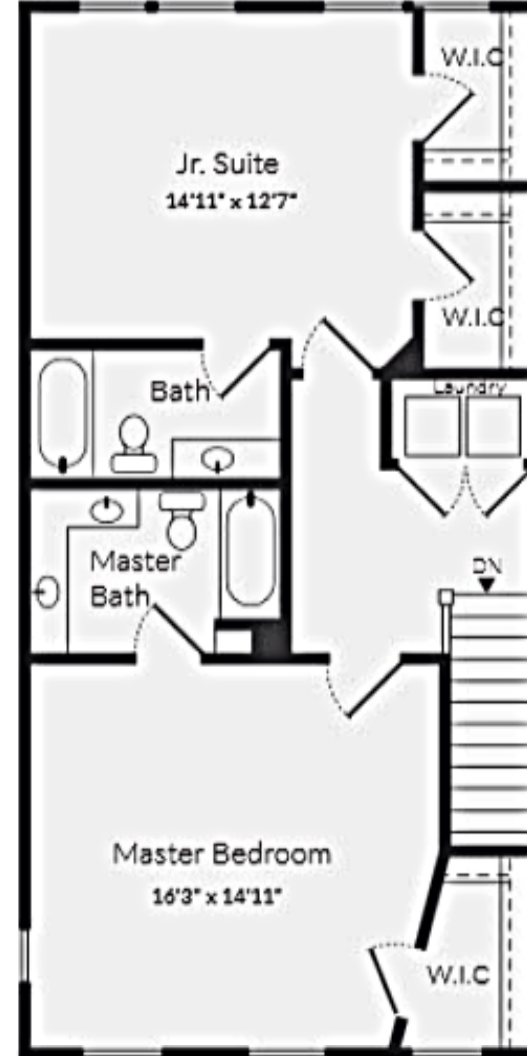
- 2-Car Garage
- 3 Bedrooms
- 3.5 Bathrooms



Second



Third



Square Footage:

Level 1 = 359

Level 2 = 855

Level 3 = 855

TOTAL = 2,069

- 2-Car Garage
- 3 Bedrooms
- 3.5 Bathrooms