




# Luxury is Standard

Check out **OUR**  
**STANDARD FEATURES**; how  
they compare and **EXCEED**  
those of our competitors!



## Standard Features

### IMPRESSIVE INTERIORS:

Laminated Entry, Spacious Great Rooms, and Kitchen  
Tiled Laundry and Baths  
Granite Countertops through-out (optional Quartz)  
Grand Master Bathroom - Large Walk-in Closet, 2 Sinks  
Master Bath Tub with Tiled Floor & Walk-in Shower  
Quality Carpet with 8 lb. Carpet Pad  
All Rooms with Cable Outlets  
Phone Outlet in Master Bedroom and Kitchen  
2 Tone Paint (Optional 3 tone Paint)  
Rounded Drywall Corners  
Textured Walls  
Wood Shelving with Single Rod in Closets  
Interior Hardware - Brushed Nickel  
Interior Trim (5" baseboards and 3" door casings)  
Central Air Conditioner and Furnace  
LED Lighting  
LOWE Windows  
50 Gallon Water Heater

### SPECTACULAR KITCHEN:

Granite Counter Tops & Island  
Stainless Steel Kitchen Sink  
Exceptional Cabinets with 4 Colors to Choose from  
Staggered Cabinets with Crown Molding  
Can Lights in the Kitchen (per plan)  
GE Stainless Steel Electric Glass Top Range,  
Microwave Hood, and Dishwasher (Optional Gas Range)

### EXTERIOR :

Beautiful Exterior with Siding, Rock, and stucco per plan  
Insulated Fiberglass Front Door  
Two Car Garage with Two Remotes  
Architectural Shingles w/30-year Manufacturer's Limited  
Warranty  
Dual Pane/ Windows  
Vinyl Fence

### POPULAR UPGRADES:

Theater room under Garage  
Fireplace  
Painted Stair Railing  
Stain Grade Iron Stair Railing  
Extended Kitchen Island  
Finished basement  
Additional Window  
USB Charging Outlets  
Under Cabinet Kitchen Lighting  
Insulated Garage walls  
Insulated Garage door  
Video Doorbell  
Textured & Painted Garage  
Nest Smart Home Thermostat  
Christmas light outlet  
Barn Sink in the kitchen  
One large sink in Kitchen  
Laundry cabinets

Call For Appointment Today!

801.871.9098

[www.R5HM.com](http://www.R5HM.com)



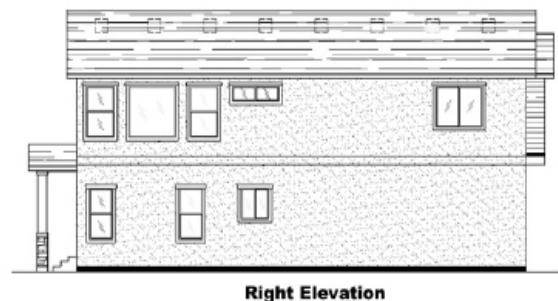
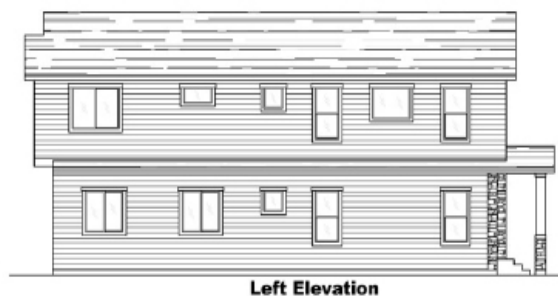
**LUXURY**  
is STANDARD

## THE STONEBRIDGE



Open Living Space, Large Kitchen with Beautiful Cabinets, Kitchen Island, Granite Counter Tops, Huge Master Suite with 2 Sinks, Separate Tub and Shower Tiled with Large Walk-in Closet, Unfinished Basement.

- 2260 Square Footage (3 Levels)
- 3 (4) Bedrooms, 2.5 (3.5) Bathrooms
- 2 Car Garage



Note: Drawings, measurements, pictures, square footages, floor plans, elevations, features, colors and sizes are for illustration purposes only and will vary from the homes as built

**Afsaneh Rafati, Realtor®**

801.201.4487

801.871.9098

[Afsanehr@yahoo.com](mailto:Afsanehr@yahoo.com)

[www.R5HM.com](http://www.R5HM.com)



©2018 ALL LOGOS AND BRANDS ARE PROPERTY OF THEIR RESPECTIVE OWNERS. USE OF THESE NAMES, LOGOS, AND BRANDS DOES NOT IMPLY ENDORSEMENT.