



Luxury is Standard

Check out **OUR**
STANDARD FEATURES; how
they compare and **EXCEED**
those of our competitors!



Standard Features

IMPRESSIVE INTERIORS:

Laminated Entry, Spacious Great Rooms, and Kitchen
Tiled Laundry and Baths
Granite Countertops through-out (optional Quartz)
Grand Master Bathroom - Large Walk-in Closet, 2 Sinks
Master Bath Tub with Tiled Floor & Walk-in Shower
Quality Carpet with 8 lb. Carpet Pad
All Rooms with Cable Outlets
Phone Outlet in Master Bedroom and Kitchen
2 Tone Paint (Optional 3 tone Paint)
Rounded Drywall Corners
Textured Walls
Wood Shelving with Single Rod in Closets
Interior Hardware - Brushed Nickel
Interior Trim (5" baseboards and 3" door casings)
Central Air Conditioner and Furnace
LED Lighting
LOWE Windows
50 Gallon Water Heater

SPECTACULAR KITCHEN:

Granite Counter Tops & Island
Stainless Steel Kitchen Sink
Exceptional Cabinets with 4 Colors to Choose from
Staggered Cabinets with Crown Molding
Can Lights in the Kitchen (per plan)
GE Stainless Steel Electric Glass Top Range,
Microwave Hood, and Dishwasher (Optional Gas Range)

EXTERIOR :

Beautiful Exterior with Siding, Rock, and stucco per plan
Insulated Fiberglass Front Door
Two Car Garage with Two Remotes
Architectural Shingles w/30-year Manufacturer's Limited
Warranty
Dual Pane/ Windows
Vinyl Fence

POPULAR UPGRADES:

Theater room under Garage
Fireplace
Painted Stair Railing
Stain Grade Iron Stair Railing
Extended Kitchen Island
Finished basement
Additional Window
USB Charging Outlets
Under Cabinet Kitchen Lighting
Insulated Garage walls
Insulated Garage door
Video Doorbell
Textured & Painted Garage
Nest Smart Home Thermostat
Christmas light outlet
Barn Sink in the kitchen
One large sink in Kitchen
Laundry cabinets

Call For Appointment Today!

801.871.9098

www.R5HM.com



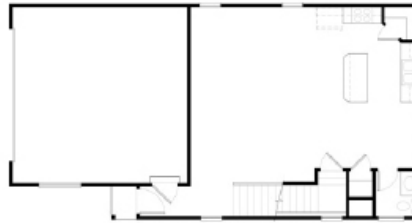
LUXURY
is STANDARD

THE SKYLINE

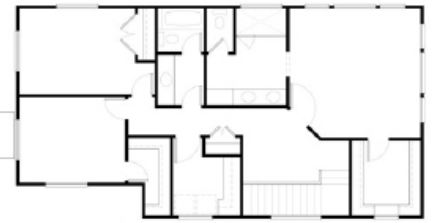


Open Living Space, Large Kitchen with Beautiful Cabinets, Kitchen Island, Granite Counter Tops, Huge Master Suite with 2 Sinks, Separate Tub and Shower Tiled with Large Walk-in Closet, Unfinished Basement.

- 2628 Square Footage (3 Levels)
- 3 (4) Bedrooms, 2.5 (3.5) Bathrooms
- 2 Car Garage



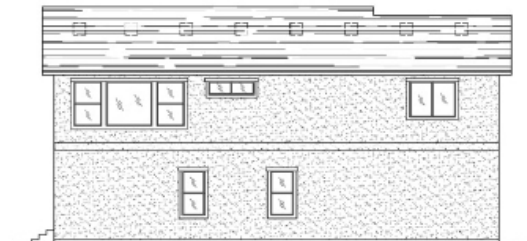
Main Level 741 Sq. Feet



Upper Level 1137 Sq. Feet



Front Elevation



Left Elevation



Rear Elevation



Right Elevation

Note: Drawings, measurements, pictures, square footages, floor plans, elevations, features, colors and sizes are for illustration purposes only and will vary from the homes as built

Afsaneh Rafati, Realtor®

801.201.4487

801.871.9098

Afsanehr@yahoo.com

www.R5HM.com



©2018 ALL LOGOS AND BRANDS ARE PROPERTY OF THEIR RESPECTIVE OWNERS. USE OF THESE NAMES, LOGOS, AND BRANDS DOES NOT IMPLY ENDORSEMENT.