

FieldStone
HOMES

SCENIC MOUNTAIN

(801) 872-6822

4348 E INVERNESS LN
EAGLE MOUNTAIN, UT 84005



2,389 finished sq.ft.
3,285 total sq.ft.

THE ALBION

4-6 bedrooms
2.5-3.5 bathrooms

THIS HOME FEATURES

Whirlpool Electric Range (White or Black)
Whirlpool Dishwasher (White or Black)
Whirlpool Microwave (White or Black)
HD Laminate Countertops
Laminate Flooring in Entry, Kitchen, Nook,
Mudroom, and Pantry
Floorté in Bathrooms and Laundry

Moen Integra Faucet with Sprayer (Chrome)
9' ceilings on Main Floor
Single Sink in Master Bathroom
One-Tone Paint
Full James Hardie Exterior
Front & Side Yard Landscaping



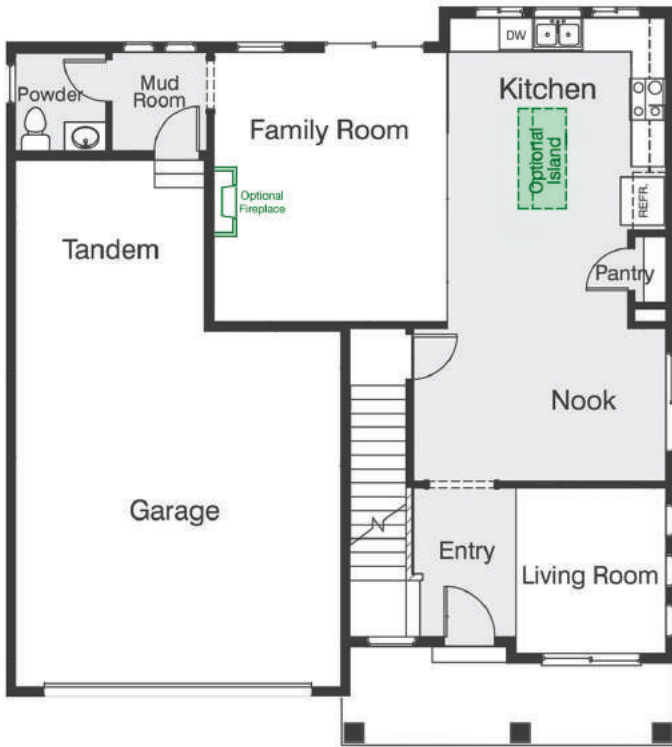
*Home sq. ft. are approximate and are subject to change. Fieldstone Homes reserves the right to change or withdraw a floor plan without notice.



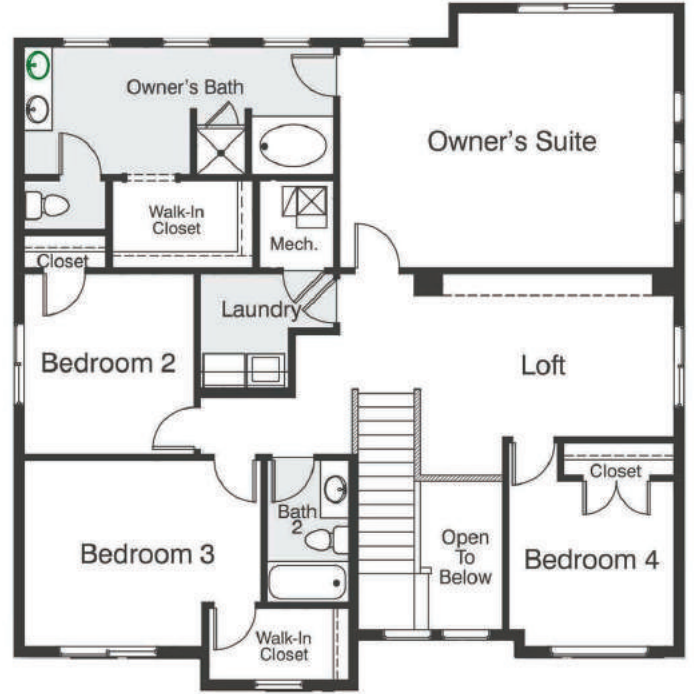
SCAN FOR 3D TOUR,
COMMUNITY INFO,
AND MORE.

[fieldstonehomes.com](https://www.fieldstonehomes.com)

FLOOR PLAN LAYOUT



FIRST FLOOR
APPROX. 968 SQ FT



SECOND FLOOR
APPROX. 1,421 SQ FT

Finished Basement Option



UNFINISHED BASEMENT
APPROX. 896 SQ FT

*Home sq. ft. are approximate and are subject to change. Fieldstone Homes reserves the right to change or withdraw a floor plan without notice. Floorplan features highlighted in green are optional upgrades.

FieldStone
HOMES

SCENIC MOUNTAIN

(801) 872-6822

4348 E INVERNESS LN
EAGLE MOUNTAIN, UT 84005



1,785 finished sq.ft.
2,413 total sq.ft.

THE ALTA

3-4 bedrooms
2.5-3.5 bathrooms

THIS HOME FEATURES

Whirlpool Electric Range (White or Black)
Whirlpool Dishwasher (White or Black)
Whirlpool Microwave (White or Black)
HD Laminate Countertops
Laminate Flooring in Entry, Kitchen, Nook,
Mudroom, and Pantry
Floorté in Bathrooms and Laundry

Moen Integra Faucet with Sprayer (Chrome)
9' ceilings on Main Floor
Single Sink in Master Bathroom
One-Tone Paint
Full James Hardie Exterior
Front & Side Yard Landscaping



*Home sq. ft. are approximate and are subject to change. Fieldstone Homes reserves the right to change or withdraw a floor plan without notice.



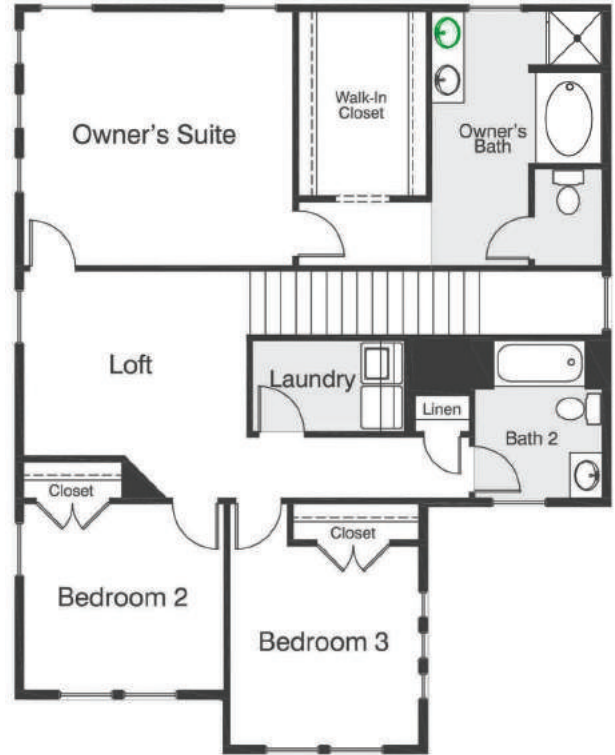
SCAN FOR 3D TOUR,
COMMUNITY INFO,
AND MORE.

fieldstonehomes.com

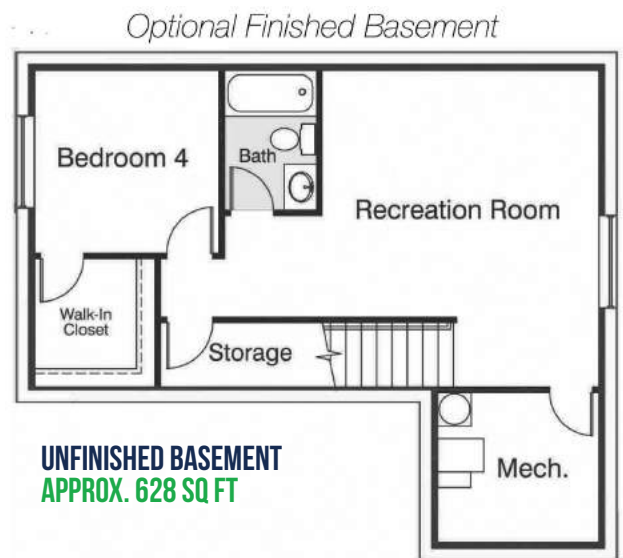
FLOOR PLAN LAYOUT



FIRST FLOOR
APPROX. 689 SQ FT



SECOND FLOOR
APPROX. 1,096 SQ FT



UNFINISHED BASEMENT
APPROX. 628 SQ FT

*Home sq. ft. are approximate and are subject to change. Fieldstone Homes reserves the right to change or withdraw a floor plan without notice. Floorplan features highlighted in green are optional upgrades.

**FieldStone
HOMES**

SCENIC MOUNTAIN

(801) 872-6822

4348 E INVERNESS LN

EAGLE MOUNTAIN, UT 84005



1,839 finished sq.ft.
2,522 total sq.ft.

THE FREMONT

3-4 bedrooms
2.5-3.5 bathrooms

THIS HOME FEATURES

Whirlpool Electric Range (White or Black)
Whirlpool Dishwasher (White or Black)
Whirlpool Microwave (White or Black)
HD Laminate Countertops
Laminate Flooring in Entry, Kitchen, Nook,
Mudroom, and Pantry
Floorté in Bathrooms and Laundry

Moen Integra Faucet with Sprayer (Chrome)
9' ceilings on Main Floor
Single Sink in Master Bathroom
One-Tone Paint
Full James Hardie Exterior
Front & Side Yard Landscaping



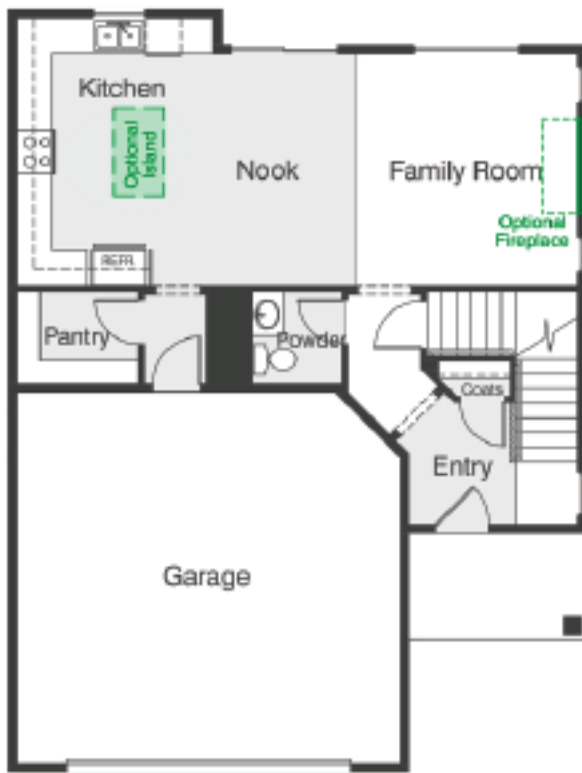
*Home sq. ft. are approximate and are subject to change. Fieldstone Homes reserves the right to change or withdraw a floor plan without notice.



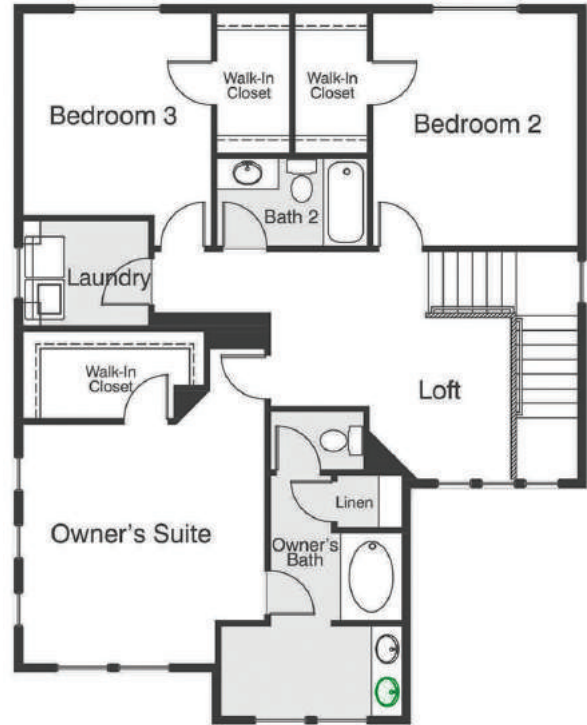
SCAN FOR 3D TOUR,
COMMUNITY INFO,
AND MORE.

fieldstonehomes.com

FLOOR PLAN LAYOUT

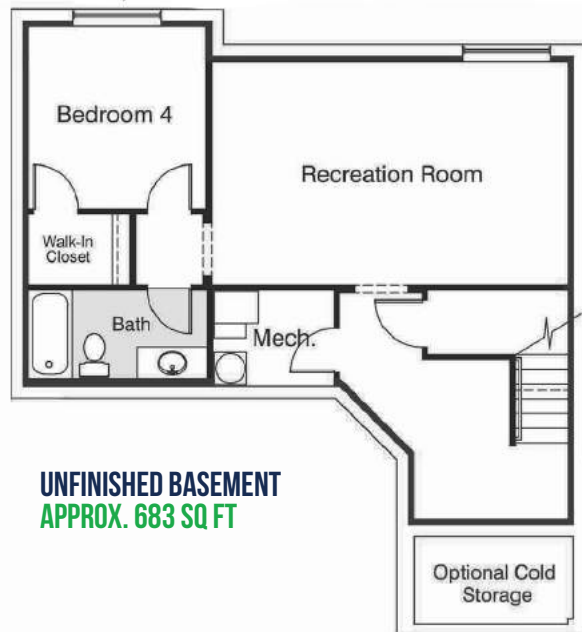


FIRST FLOOR
APPROX. 743 SQ FT



SECOND FLOOR
APPROX. 1,096 SQ FT

Optional Finished Basement



UNFINISHED BASEMENT
APPROX. 683 SQ FT

*Home sq. ft. are approximate and are subject to change. Fieldstone Homes reserves the right to change or withdraw a floor plan without notice. Floorplan features highlighted in green are optional upgrades.

FieldStone
HOMES

SCENIC MOUNTAIN

(801) 872-6822

4348 E INVERNESS LN

EAGLE MOUNTAIN, UT 84005



1,937 finished sq.ft.
2,725 total sq.ft.

THE MORGAN

3-5 bedrooms
2.5-3.5 bathrooms

THIS HOME FEATURES

Whirlpool Electric Range (White or Black)
Whirlpool Dishwasher (White or Black)
Whirlpool Microwave (White or Black)
HD Laminate Countertops
Laminate Flooring in Entry, Kitchen, Nook,
Mudroom, and Pantry
Floorté in Bathrooms and Laundry

Moen Integra Faucet with Sprayer (Chrome)
9' ceilings on Main Floor
Single Sink in Master Bathroom
One-Tone Paint
Full James Hardie Exterior
Front & Side Yard Landscaping



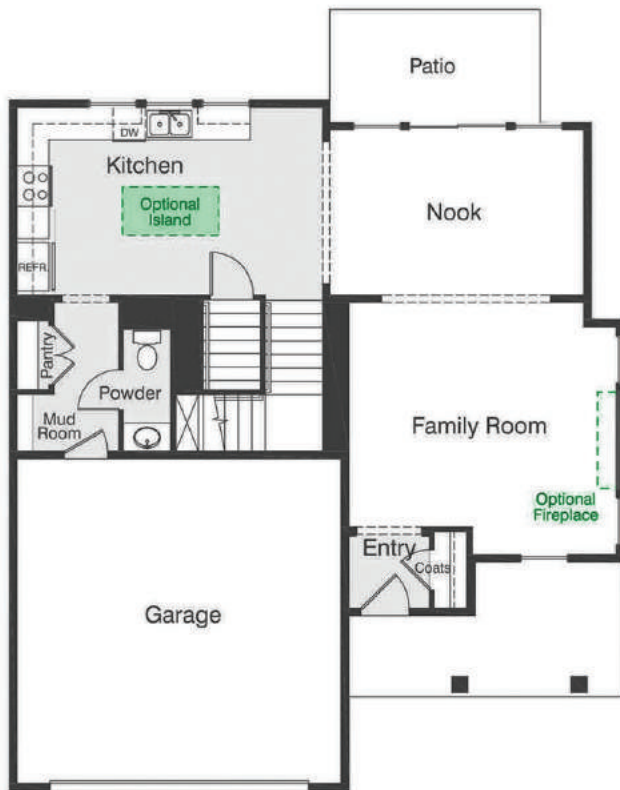
*Home sq. ft. are approximate and are subject to change. Fieldstone Homes reserves the right to change or withdraw a floor plan without notice.



SCAN FOR 3D TOUR,
COMMUNITY INFO,
AND MORE.

fieldstonehomes.com

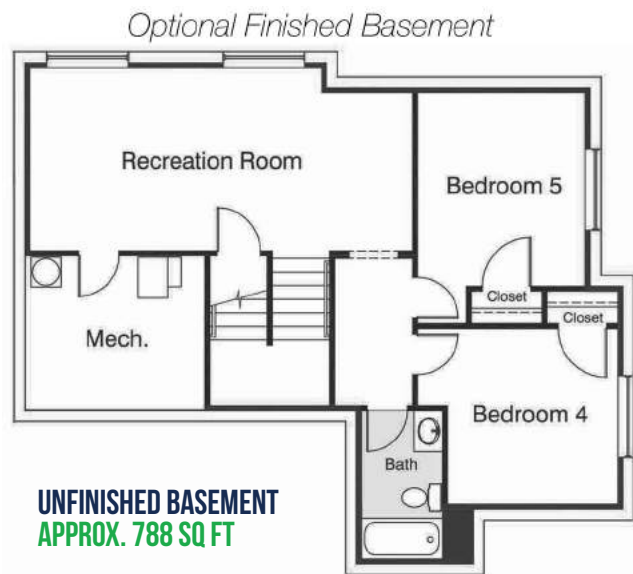
FLOOR PLAN LAYOUT



FIRST FLOOR
APPROX. 937 SQ FT



SECOND FLOOR
APPROX. 1,000 SQ FT



UNFINISHED BASEMENT
APPROX. 788 SQ FT

*Home sq. ft. are approximate and are subject to change. Fieldstone Homes reserves the right to change or withdraw a floor plan without notice. Floorplan features highlighted in green are optional upgrades.

FieldStone
HOMES

SCENIC MOUNTAIN

(801) 872-6822

4348 E INVERNESS LN
EAGLE MOUNTAIN, UT 84005



2,175 finished sq.ft.
3,029 total sq.ft.

THE OQUIRRH

3-5 bedrooms
2.5-3.5 bathrooms

THIS HOME FEATURES

Whirlpool Electric Range (White or Black)
Whirlpool Dishwasher (White or Black)
Whirlpool Microwave (White or Black)
HD Laminate Countertops
Laminate Flooring in Entry, Kitchen, Nook,
Mudroom, and Pantry
Floorté in Bathrooms and Laundry

Moen Integra Faucet with Sprayer (Chrome)
9' ceilings on Main Floor
Single Sink in Master Bathroom
One-Tone Paint
Full James Hardie Exterior
Front & Side Yard Landscaping



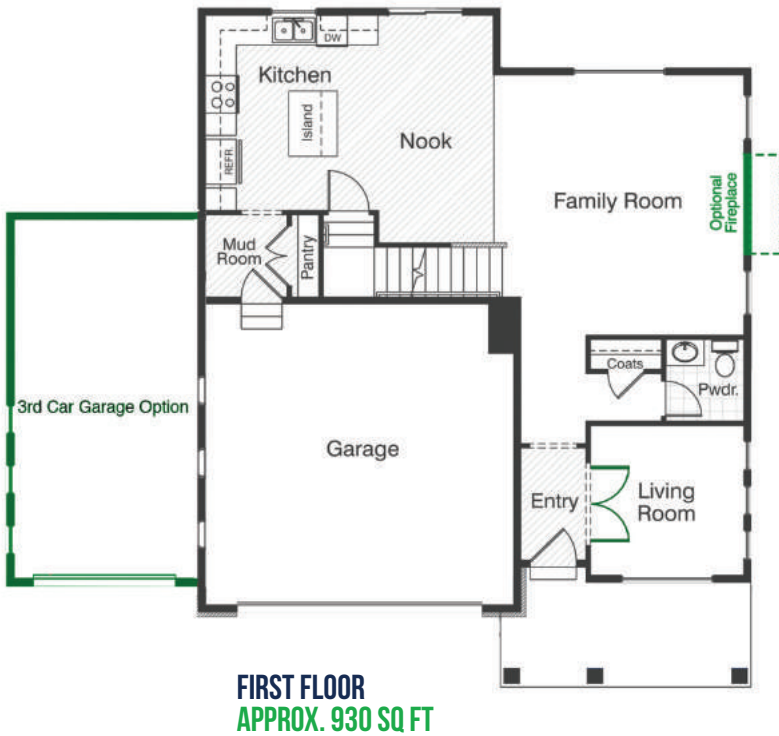
*Home sq. ft. are approximate and are subject to change. Fieldstone Homes reserves the right to change or withdraw a floor plan without notice.



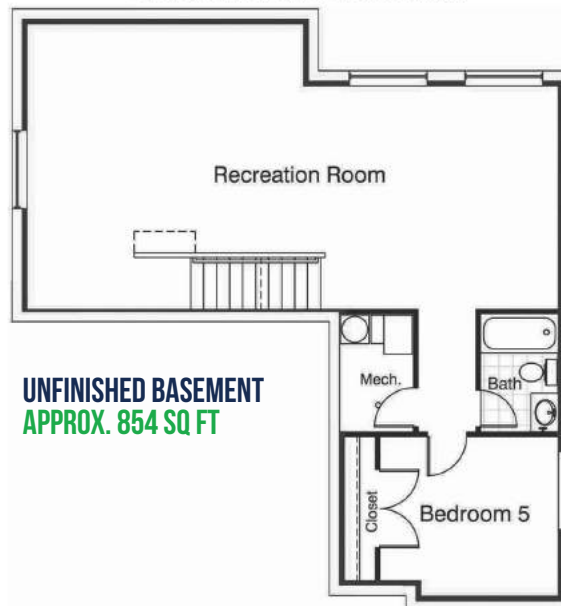
SCAN FOR 3D TOUR,
COMMUNITY INFO,
AND MORE.

fieldstonehomes.com

FLOOR PLAN LAYOUT



Optional Finished Basement



*Home sq. ft. are approximate and are subject to change. Fieldstone Homes reserves the right to change or withdraw a floor plan without notice. Floorplan features highlighted in green are optional upgrades.

**FieldStone
HOMES**

SCENIC MOUNTAIN

(801) 872-6822

4348 E INVERNESS LN
EAGLE MOUNTAIN, UT 84005



1,540 finished sq.ft.
2,210 total sq.ft.

THE REESE

3-4 bedrooms
2.5-3.5 bathrooms

THIS HOME FEATURES

Whirlpool Electric Range (White or Black)
Whirlpool Dishwasher (White or Black)
Whirlpool Microwave (White or Black)
HD Laminate Countertops
Laminate Flooring in Entry, Kitchen, Nook,
Mudroom, and Pantry
Floorté in Bathrooms and Laundry

Moen Integra Faucet with Sprayer (Chrome)
9' ceilings on Main Floor
Single Sink in Master Bathroom
One-Tone Paint
Full James Hardie Exterior
Front & Side Yard Landscaping



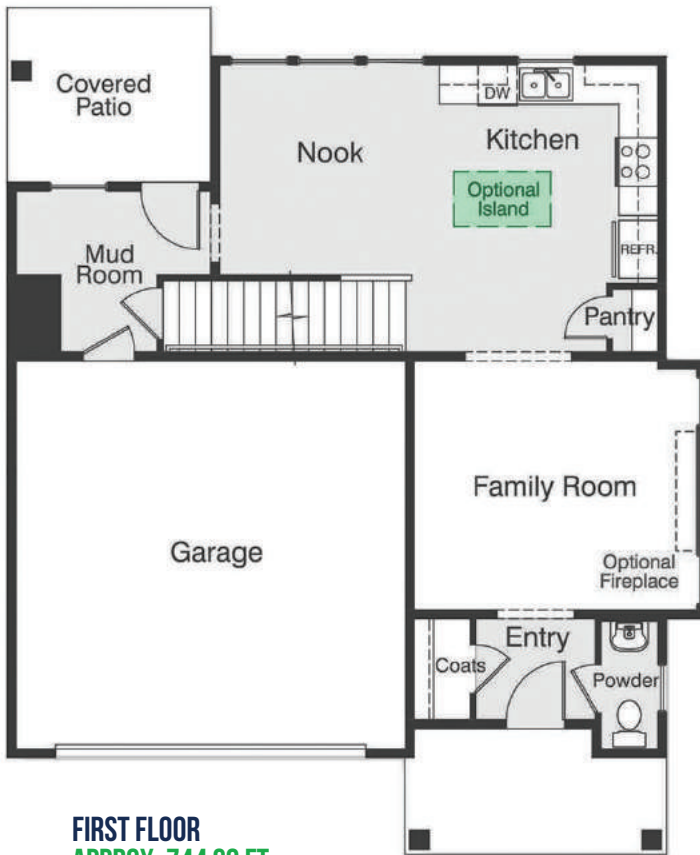
*Home sq. ft. are approximate and are subject to change. Fieldstone Homes reserves the right to change or withdraw a floor plan without notice.



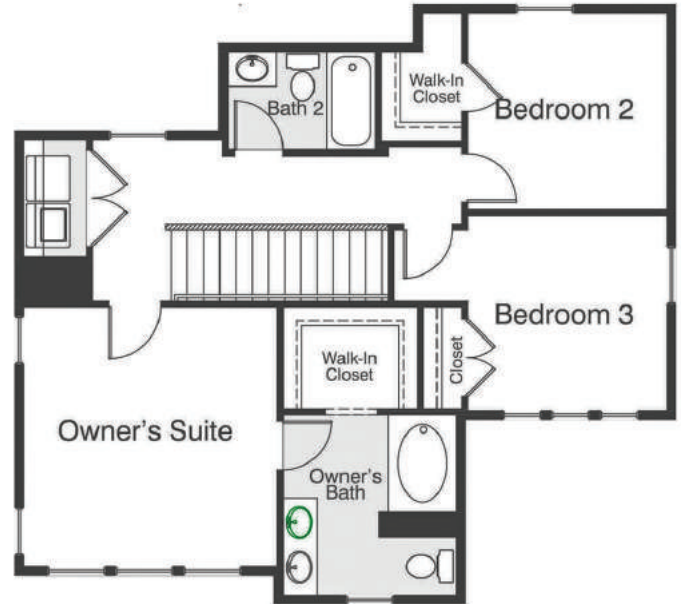
SCAN FOR 3D TOUR,
COMMUNITY INFO,
AND MORE.

fieldstonehomes.com

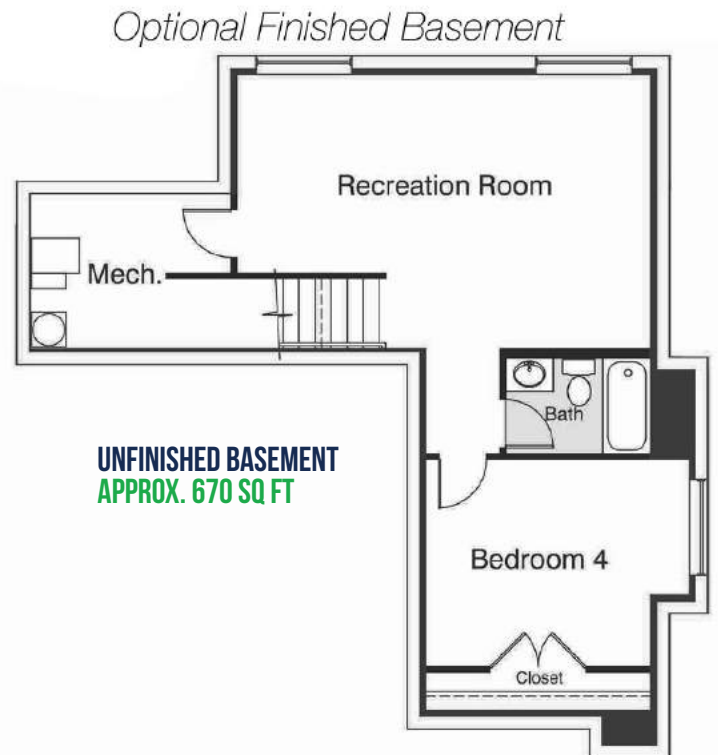
FLOOR PLAN LAYOUT



FIRST FLOOR
APPROX. 744 SQ FT



SECOND FLOOR
APPROX. 796 SQ FT



UNFINISHED BASEMENT
APPROX. 670 SQ FT

*Home sq. ft. are approximate and are subject to change. Fieldstone Homes reserves the right to change or withdraw a floor plan without notice. Floorplan features highlighted in green are optional upgrades.

**FieldStone
HOMES**

SCENIC MOUNTAIN

(801) 872-6822

4348 E INVERNESS LN

EAGLE MOUNTAIN, UT 84005



1,966 finished sq.ft.
2,919 total sq.ft.

THE JUNIPER

3-5 bedrooms
2.5-3.5 bathrooms

THIS HOME FEATURES

Whirlpool Electric Range (White or Black)
Whirlpool Dishwasher (White or Black)
Whirlpool Microwave (White or Black)
HD Laminate Countertops
Laminate Flooring in Entry, Kitchen, Nook,
Mudroom, and Pantry
Floorté in Bathrooms and Laundry

Moen Integra Faucet with Sprayer (Chrome)
9' ceilings on Main Floor
Single Sink in Master Bathroom
One-Tone Paint
Full James Hardie Exterior
Front & Side Yard Landscaping



*Home sq. ft. are approximate and are subject to change. Fieldstone Homes reserves the right to change or withdraw a floor plan without notice.



SCAN FOR 3D TOUR,
COMMUNITY INFO,
AND MORE.

fieldstonehomes.com

FLOOR PLAN LAYOUT

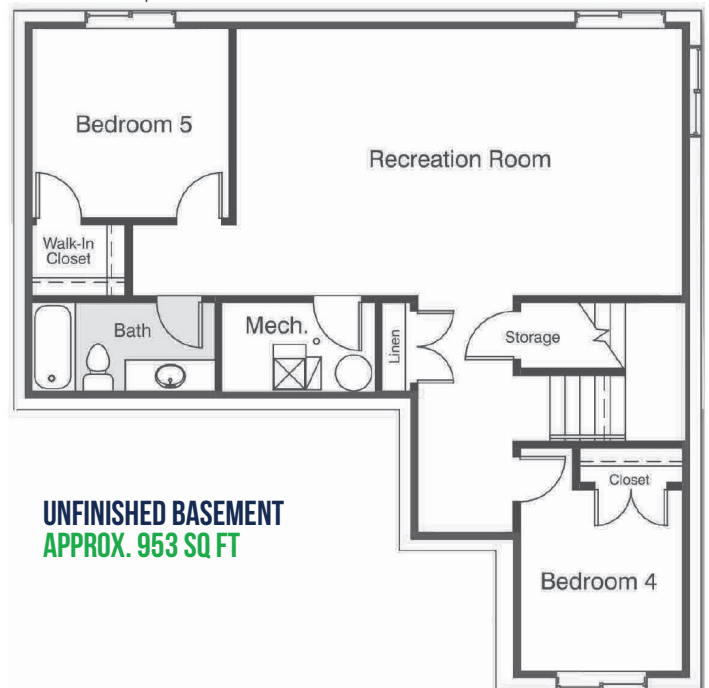


FIRST FLOOR
APPROX. 1,034 SQ FT



SECOND FLOOR
APPROX. 932 SQ FT

Optional Finished Basement



UNFINISHED BASEMENT
APPROX. 953 SQ FT

*Home sq. ft. are approximate and are subject to change. Fieldstone Homes reserves the right to change or withdraw a floor plan without notice. Floorplan features highlighted in green are optional upgrades.

FieldStone
HOMES

SCENIC MOUNTAIN

(801) 872-6822

4348 E INVERNESS LN

EAGLE MOUNTAIN, UT 84005



2,147 finished sq.ft.
3,005 total sq.ft.

THE SIERRA

3-5 bedrooms
2.5-3.5 bathrooms

THIS HOME FEATURES

Whirlpool Electric Range (White or Black)
Whirlpool Dishwasher (White or Black)
Whirlpool Microwave (White or Black)
HD Laminate Countertops
Laminate Flooring in Entry, Kitchen, Nook,
Mudroom, and Pantry
Floorté in Bathrooms and Laundry

Moen Integra Faucet with Sprayer (Chrome)
9' ceilings on Main Floor
Single Sink in Master Bathroom
One-Tone Paint
Full James Hardie Exterior
Front & Side Yard Landscaping



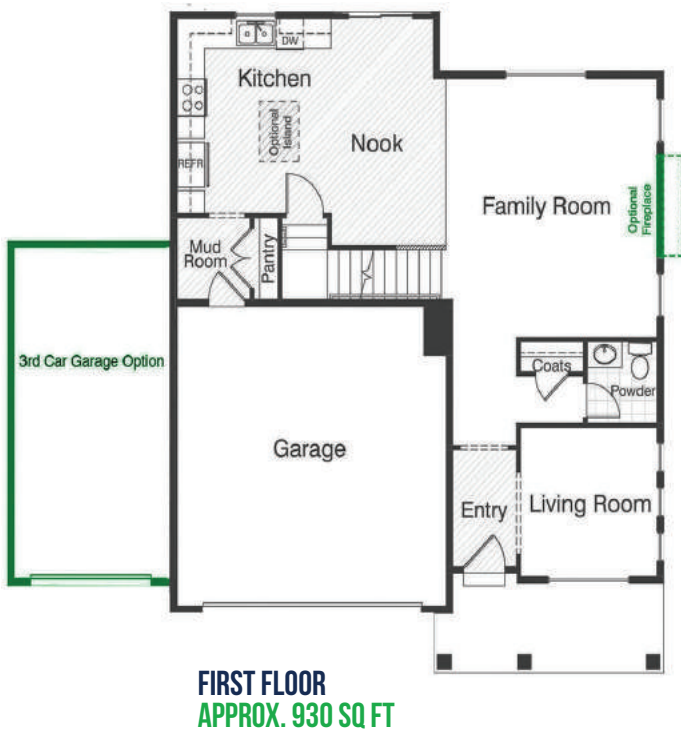
*Home sq. ft. are approximate and are subject to change. Fieldstone Homes reserves the right to change or withdraw a floor plan without notice.



SCAN FOR 3D TOUR,
COMMUNITY INFO,
AND MORE.

fieldstonehomes.com

FLOOR PLAN LAYOUT



*Home sq. ft. are approximate and are subject to change. Fieldstone Homes reserves the right to change or withdraw a floor plan without notice. Floorplan features highlighted in green are optional upgrades.

FieldStone
HOMES

SCENIC MOUNTAIN

(801) 872-6822

4348 E INVERNESS LN
EAGLE MOUNTAIN, UT 84005



1,610 finished sq.ft.
2,325 total sq.ft.

THE TRIDELL

3 bedrooms
2.5-3.5 bathrooms

THIS HOME FEATURES

Whirlpool Electric Range (White or Black)
Whirlpool Dishwasher (White or Black)
Whirlpool Microwave (White or Black)
HD Laminate Countertops
Laminate Flooring in Entry, Kitchen, Nook,
Mudroom, and Pantry
Floorté in Bathrooms and Laundry

Moen Integra Faucet with Sprayer (Chrome)
9' ceilings on Main Floor
Single Sink in Master Bathroom
One-Tone Paint
Full James Hardie Exterior
Front & Side Yard Landscaping

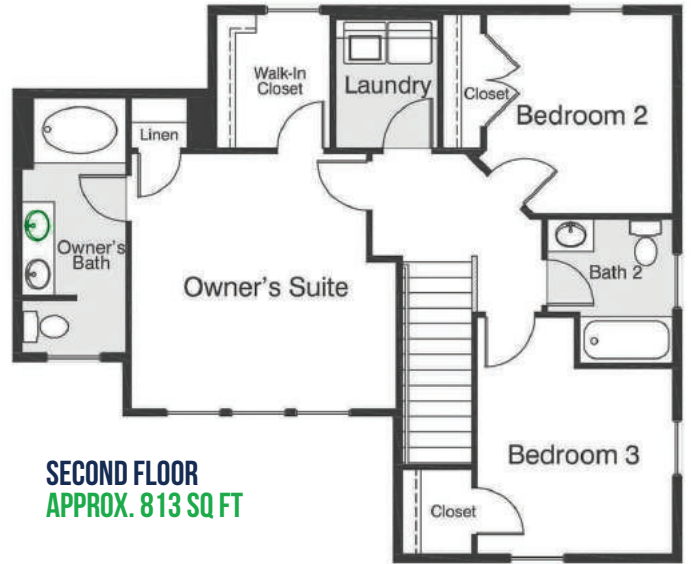
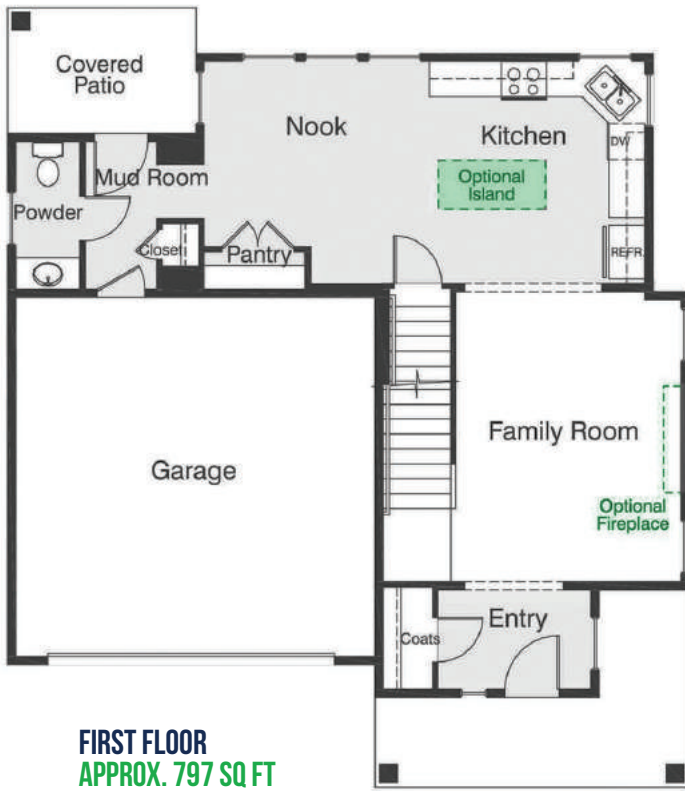


*Home sq. ft. are approximate and are subject to change. Fieldstone Homes reserves the right to change or withdraw a floor plan without notice.

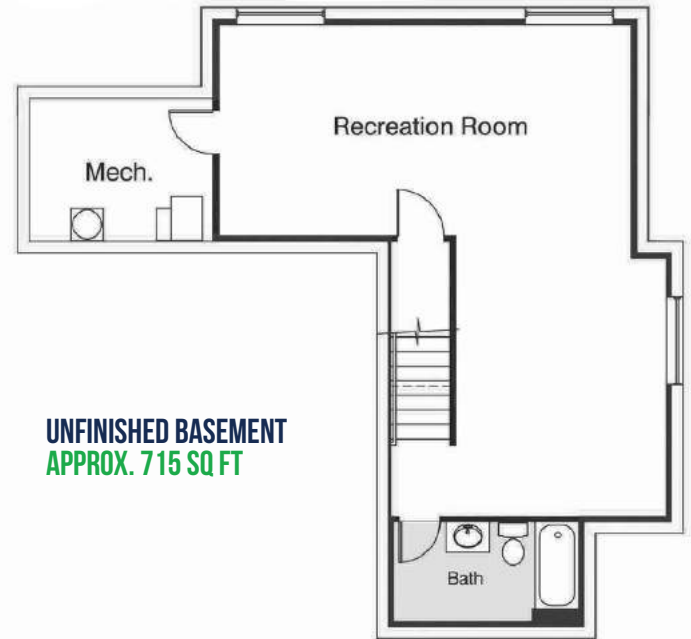


SCAN FOR 3D TOUR,
COMMUNITY INFO,
AND MORE.
fieldstonehomes.com

FLOOR PLAN LAYOUT



Optional Finished Basement



*Home sq. ft. are approximate and are subject to change. Fieldstone Homes reserves the right to change or withdraw a floor plan without notice. Floorplan features highlighted in green are optional upgrades.