



# "FLORENCE"



**ELEVATION "A"**

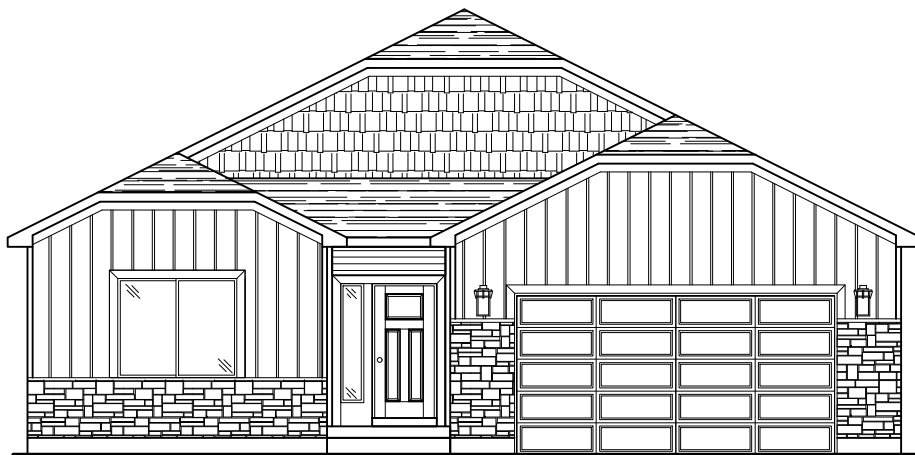
APPROX. SQ. FT.

MAIN FLOOR 1,535 SQ. FT.  
TOTAL FINISHED 1,535 SQ. FT.

OPTION  
UNFINISHED BASEMENT 1,535 SQ. FT.  
TOTAL W/ BASEMENT 3,070 SQ. FT.

HOME SPECS

9'-0" CEILINGS ON MAIN LEVEL  
2 CAR GARAGE  
3 BEDROOMS, OPTION 5 BEDROOMS TOTAL  
2 BATHS, OPTION 3 BATHS  
44'-0" WIDE X 45'-0" DEEP



**ELEVATION "B"**



**ELEVATION "C"**