

Included Community Features

Kitchen

Aristokraft Cabinets in Choice of Colors
Granite Countertops
Whirlpool Electric Range

Whirlpool Microwave
Whirlpool Dishwasher
Water Line to Refrigerator
Kitchen Island

Stainless Steel Sink
Laminate Flooring
Can Lights

Bath

60" Master Bath Vanity with Double Sinks
Open Glass Shower Door in Master
Fiberglass Tub/Shower in Secondary

Tile Floors in All Baths & Laundry
Porcelain White Sinks
Pedestal or Cabinet Sink
Granite Countertop in Master Bath

HD Laminate Countertops in Secondary
Bar Lights
Chrome Faucets

Interior

9' Ceiling on Main Floor
Choice of Larger Base/Case Styles
Laminate Flooring in Entry, Kitchen and Nook

Pre-wired for High-speed Internet and Cable TV
Two-Tone Paint
Upgraded Family Room Can Lights

Choice of Interior Door Style
Textured Ceilings and Walls
Smoke/Carbon Monoxide Detectors
2 USB Charging Outlets

Exterior

All Sides James Hardie Siding
Stone Accents per Plan
Window in Front Door
Garage Door Windows

Architectural Grade 30-year Shingles
Two Weatherproof Electrical Outlets
8' Garage Door with Opener

Two Freezeless Hose Bibs
Front Yard Landscaping
10x10 Concrete Patio (per plan)

Energy Efficiency

2x6 Exterior Wall Framing
R-19 Wall Insulation
R-38 Blown-in Ceiling Insulation

Natural Gas Furnace
Natural Gas Water Heater
Central Air Conditioning

Water Efficient Toilets
13 SEER air conditioning condenser

Legacy Farms Estates *Annabella*



3-5 Bedrooms 2.5-3.5 Bathrooms

This Home Features

Whirlpool Electric Range (White or Black)
Whirlpool Dishwasher (White or Black)
Whirlpool Microwave (White or Black)
Granite Countertops
Tile in Bathroom and Laundry
Moen Integra Faucet with Sprayer (Chrome)

9' Ceilings on Main Floor
Double Sinks in Master Bathroom
Two-tone paint
Front stone and James Hardie Exterior
Front Yard Landscaping with Sprinklers

Approximate Finished Square Feet: 1,900
Approximate Total Square Feet: 3,751

FieldStone
HOMES

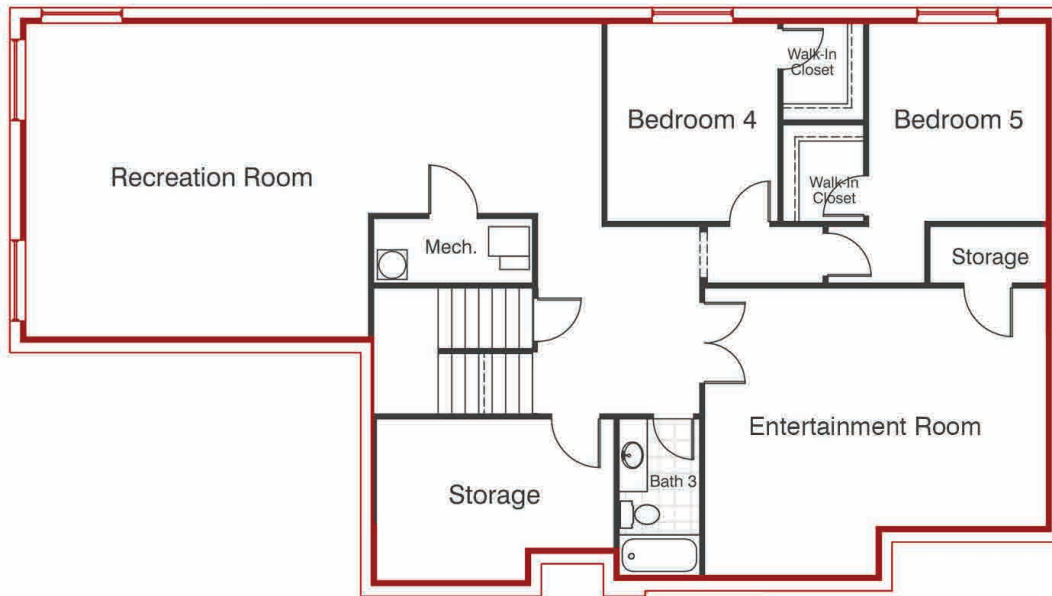
Legacy Farms Estates *Annabella*

Kitchen 16'-6" X 14'-7"
 Nook 10'-6" X 10'-7"
 Family Room 15'-0" X 16'-7"
 Living Room 10'-1" X 10'-0"
 Garage 21'-1" X 20'-11"
 Owner's Suite 14'-10" X 15'-7"
 Owner's Bath 8'-8" X 13'-0"
 Bedroom 2 11'-4" X 10'-3"
 Bedroom 3 10'-3" X 11'-6"

First Floor
 Approx. 1,900 sq. ft.



Basement
 Approx. 1,851 sq. ft.



Recreation Room 35'-8" X 19'-5"
 Bedroom 4 10'-7" X 12'-3"
 Bedroom 5 11'-0" X 12'-3"
 Entertainment Room 17'-9" X 21'-0"

Legacy Farms Estates *Fayette*



3-5 Bedrooms 2.5-4 Bathrooms

This Home Features

Whirlpool Electric Range (White or Black)
Whirlpool Dishwasher (White or Black)
Whirlpool Microwave (White or Black)
Granite Countertops
Tile in Bathroom and Laundry
Moen Integra Faucet with Sprayer (Chrome)

9' Ceilings on Main Floor
Double Sinks in Master Bathroom
Two-tone paint
Front stone and James Hardie Exterior
Front Yard Landscaping with Sprinklers

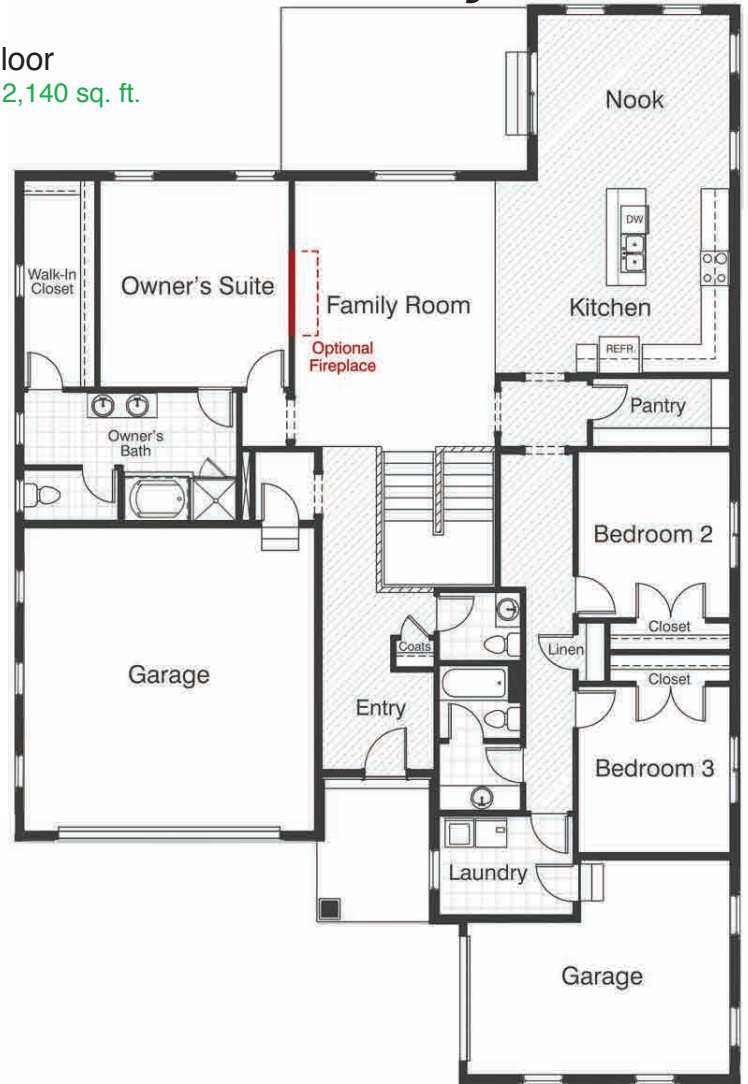
Approximate Finished Square Feet: 2,140
Approximate Total Square Feet: 4,238

FieldStone
HOMES

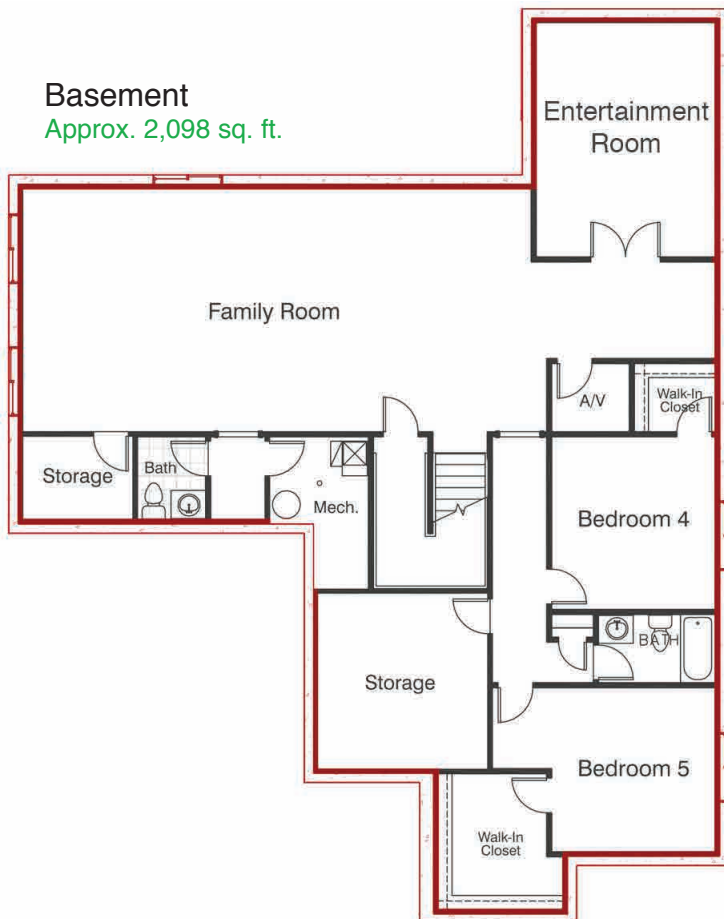
Legacy Farms Estates *Fayette*

First Floor
Approx. 2,140 sq. ft.

Kitchen 13'-11" X 13'-6"
Nook 13'-11" X 12'-0"
Family Room 17'-6" X 19'-2"
Garage 20'-11" X 21'-1"
3rd Car garage 19'-1 X 11'-1"
Owner's Suite 13'-9" X 14'-11"
Owner's Bath 15'-3" X 9'-4"
Bedroom 2 11'-0" X 12'-1"
Bedroom 3 11'-0" X 12'-1"



Basement
Approx. 2,098 sq. ft.



Recreation Room 36'-9" X 17'-7"
Bedroom 4 11'-9" X 12'-6"
Bedroom 5 11'-9" X 11'-11"
Entertainment Room 12'-11" X 17'-0"

*Home sq. ft. are approximate and are subject to change. Fieldstone Homes reserves the right to change or withdraw a floor plan without notice.

FieldStone
HOMES

Legacy Farms Estates *Skyline*



3-5 Bedrooms 2.5-3.5 Bathrooms

This Home Features

Whirlpool Electric Range (White or Black)
Whirlpool Dishwasher (White or Black)
Whirlpool Microwave (White or Black)
Granite Countertops
Tile in Bathroom and Laundry
Moen Integra Faucet with Sprayer (Chrome)

9' Ceilings on Main Floor
Double Sinks in Master Bathroom
Two-tone paint
Front stone and James Hardie Exterior
Front Yard Landscaping with Sprinklers

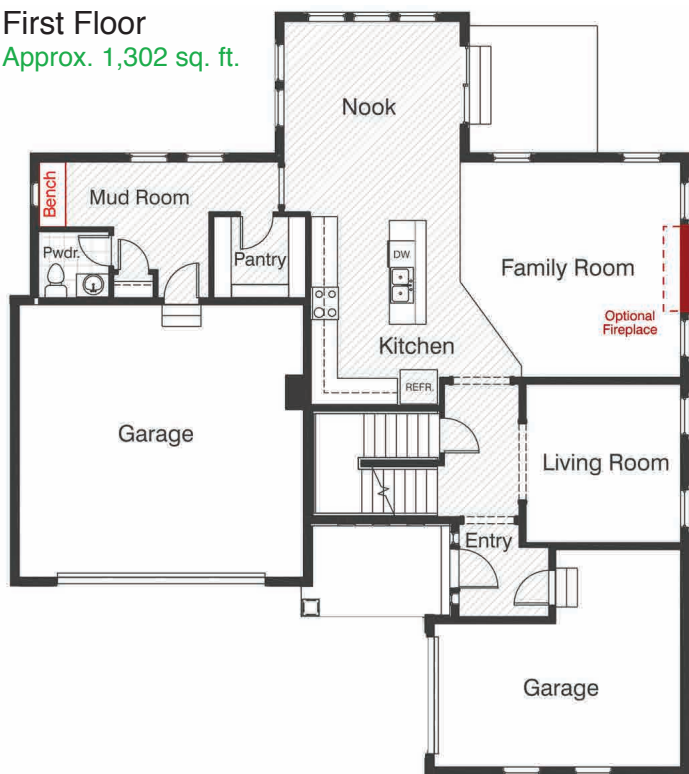
Approximate Finished Square Feet: 2,536
Approximate Total Square Feet: 3,742

FieldStone
HOMES

Legacy Farms Estates *Skyline*

First Floor

Approx. 1,302 sq. ft.

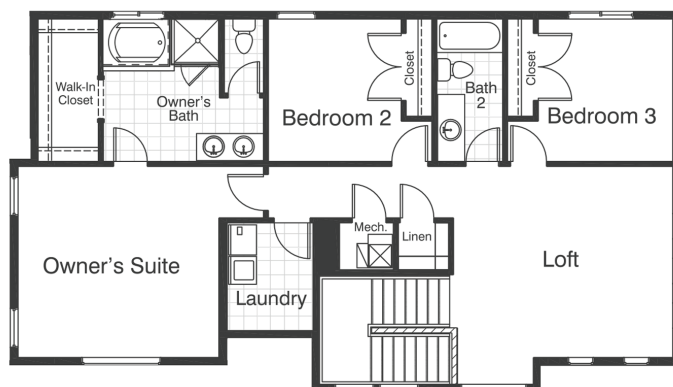


Kitchen 11'-6" X 14'-10"
 Nook 13'-8" X 10'-10"
 Family Room 17'-0" X 16'-8"
 Flex Room 12'-0" X 12'-3"
 Garage 22'-0" X 21'-0"

Owner's Suite 15'-0" X 14'-3"
 Bedroom 2 10'-0" X 10'-8"
 Bedroom 3 10'-1" X 10'-8"
 Loft 16'-4" X 14'-3"

Second Floor

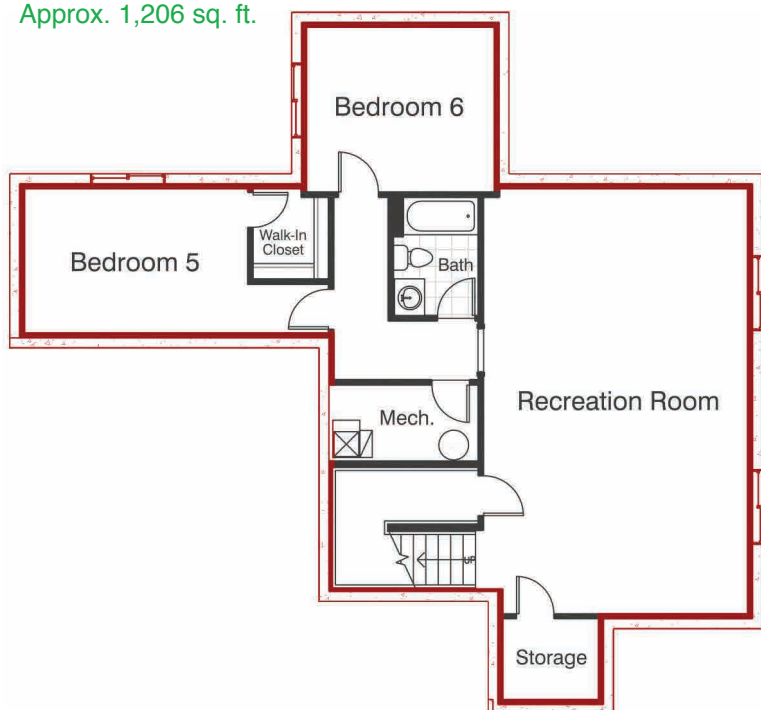
Approx. 1,234 sq. ft.



Recreation Room 17'-8" X 28'-6"
 Bedroom 5 15'-0" X 9'-8"
 Bedroom 6 10'-3" X 11'-1"

Basement

Approx. 1,206 sq. ft.



*Home sq. ft. are approximate and are subject to change. Fieldstone Homes reserves the right to change or withdraw a floor plan without notice.

Legacy Farms Estates *Aurora*



3-5 Bedrooms 2.5-3.5 Bathrooms

This Home Features

Whirlpool Electric Range (White or Black)
Whirlpool Dishwasher (White or Black)
Whirlpool Microwave (White or Black)
Granite Countertops
Tile in Bathroom and Laundry
Moen Integra Faucet with Sprayer (Chrome)

9' Ceilings on Main Floor
Double Sinks in Master Bathroom
Two-tone paint
Front stone and James Hardie Exterior
Front Yard Landscaping with Sprinklers

Approximate Finished Square Feet: 2,682
Approximate Total Square Feet: 4,387

FieldStone
HOMES

Legacy Farms Estates *Aurora*

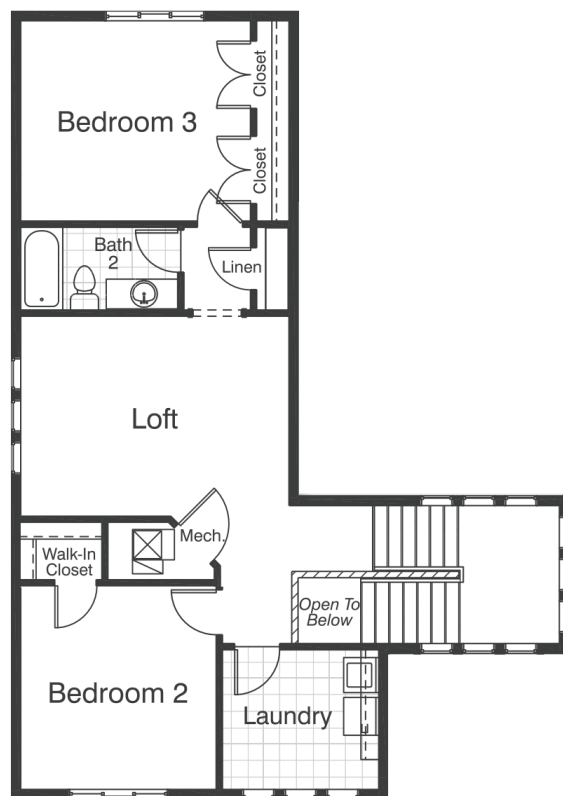
First Floor

Approx. 1,819 sq. ft.



Second Floor

Approx. 863 sq. ft.

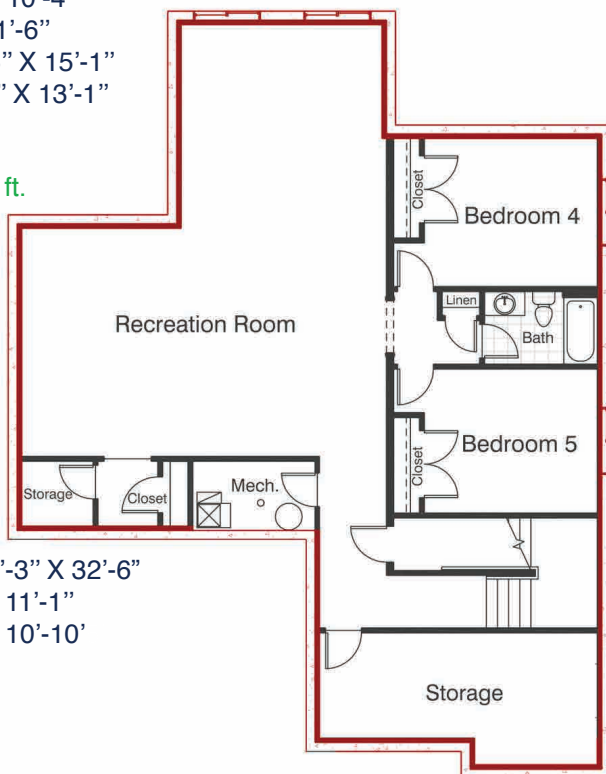


- Kitchen 11'-11" X 17'-7"
- Nook 16'-0" X 17'-7"
- Family Room 16'-0" X 15'-4"
- Flex Room 10'-2" X 10'-4"
- Garage 21'-11" X 21'-6"
- Owner's Suite 15'-6" X 15'-1"
- Owner's Bath 15'-6" X 13'-1"

- Bedroom 2 13'-8" X 12'-0"
- Bedroom 3 11'-8" X 14'-1"
- Loft 16'-0" X 11'-11"

Basement

Approx. 1,705 sq. ft.



- Recreation room 27'-3" X 32'-6"
- Bedroom 4 13'-0" X 11'-1"
- Bedroom 5 13'-0" X 10'-10"

Legacy Farms Estates *Kingsbury*



4-6 Bedrooms 2.5-3.5 Bathrooms

This Home Features

Whirlpool Electric Range (White or Black)
Whirlpool Dishwasher (White or Black)
Whirlpool Microwave (White or Black)
Granite Countertops
Tile in Bathroom and Laundry
Moen Integra Faucet with Sprayer (Chrome)

9' Ceilings on Main Floor
Double Sinks in Master Bathroom
Two-tone paint
Front stone and James Hardie Exterior
Front Yard Landscaping with Sprinklers

Approximate Finished Square Feet: 2,936
Approximate Total Square Feet: 4,160

FieldStone
HOMES

Legacy Farms Estates *Kingsbury*

First Floor

Approx. 1,314 sq. ft.

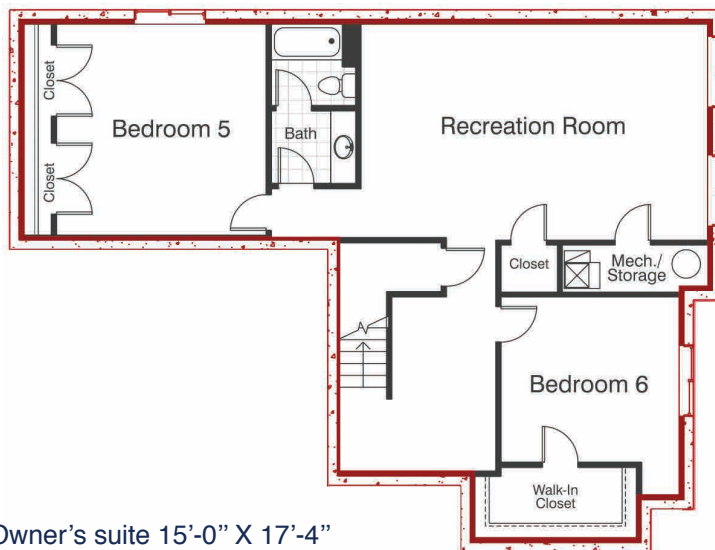


Kitchen 12'-1" X 15'-6"
 Dining 11'-10" X 15'-6"
 Family room 15'-6" X 19'-4"
 Living room 15'-0" X 16'-5"
 Garage 22'-0" X 22'-0"

Recreation room 24'-1" X 14'-11"
 Bedroom 5 14'-9" X 14'-10"
 Bedroom 6 12'-6" X 11'-4"

Basement

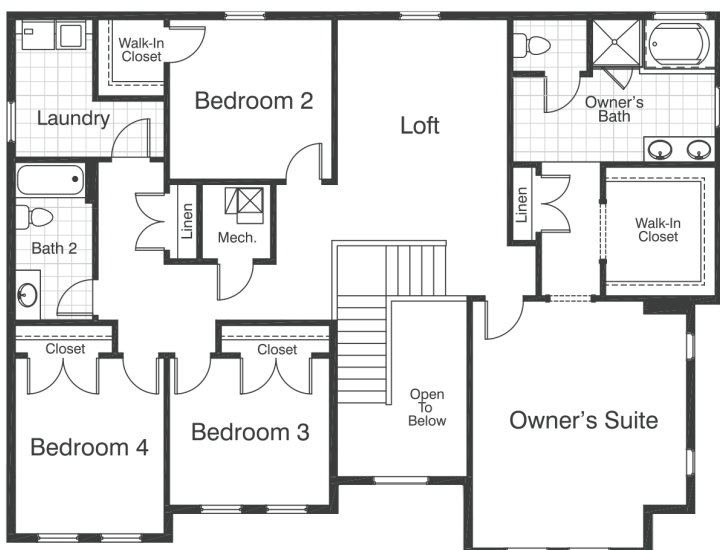
Approx. 1,224 sq. ft.



Owner's suite 15'-0" X 17'-4"
 Owner's bath 14'-2" X 10'-0"
 Bedroom 2 11'-4" X 11'-2"
 Bedroom 3 11'-4" X 10'-3"
 Bedroom 4 10'-5" X 12'-3"
 Loft 11'-11" X 11'-7"

Second Floor

Approx. 1,622 sq. ft.



Legacy Farms Estates *Uinta*



4-6 Bedrooms 2.5-3.5 Bathrooms

This Home Features

Whirlpool Electric Range (White or Black)
Whirlpool Dishwasher (White or Black)
Whirlpool Microwave (White or Black)
Granite Countertops
Tile in Bathroom and Laundry
Moen Integra Faucet with Sprayer (Chrome)

9' Ceilings on Main Floor
Double Sinks in Master Bathroom
Two-tone paint
Front stone and James Hardie Exterior
Front Yard Landscaping with Sprinklers

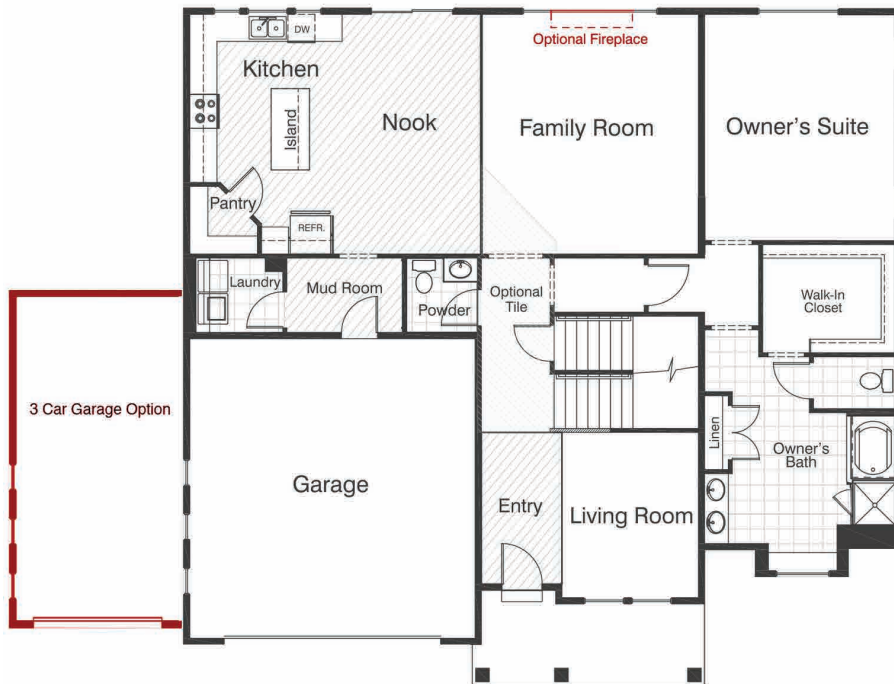
Approximate Finished Square Feet: 2,755
Approximate Total Square Feet: 4,490

FieldStone
HOMES

Legacy Farms Estates *Uinta*

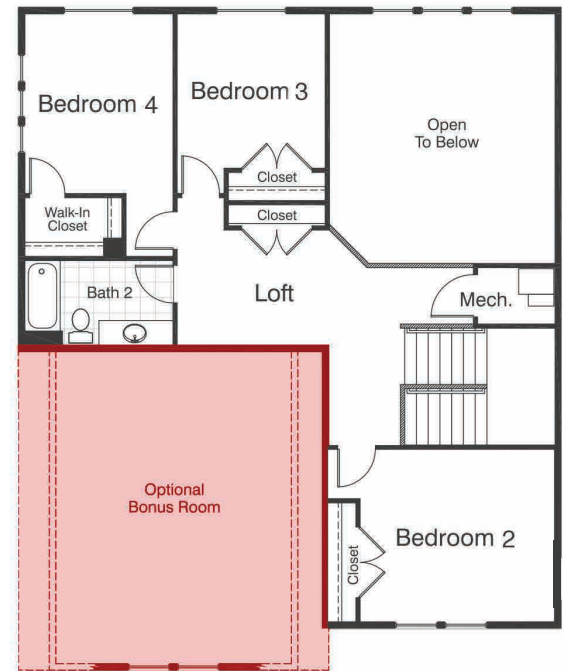
First Floor

Approx. 1,851 sq. ft.



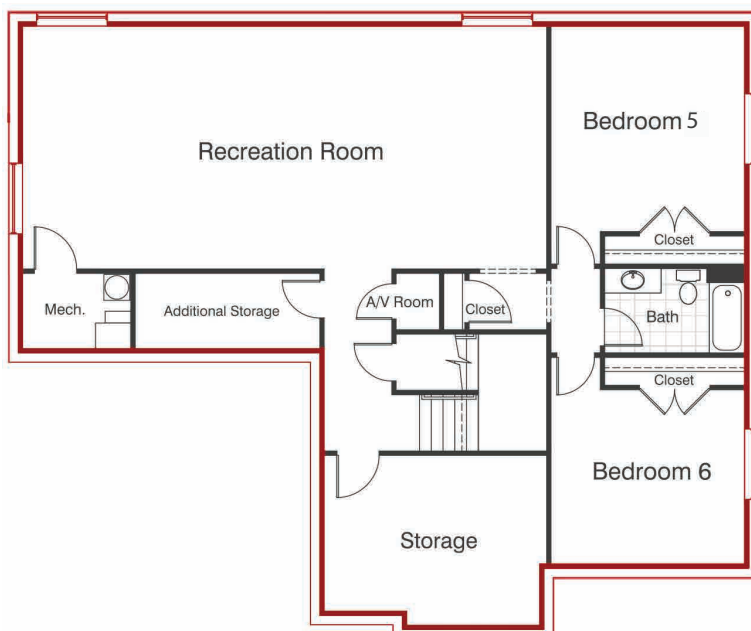
Second Floor

Approx. 904 sq. ft.



Basement

Approx. 1,735 sq. ft.



Kitchen 11'-3" X 17'-9"
 Nook 10'-4" X 17'-9"
 Family Room 16'-0" X 17'-9"
 Living Room 10'-1" X 12'-2"
 Garage 21'-1" X 22'-1"
 Owner's Suite 14'-0" X 16'-8"
 Owner's Bath 12'-0" X 13'-10"

Bedroom 2 13'-9" X 12'-3"
 Bedroom 3 10'-6" X 11'-0"
 Bedroom 4 10'-6" X 12'-9"

Recreation Room 37'-1" X 17'-3"
 Bedroom 5 13'-9" X 14'-7"
 Bedroom 6 13'-9" X 12'-3"

*Home sq. ft. are approximate and are subject to change. Fieldstone Homes reserves the right to change or withdraw a floor plan without notice.

FieldStone
HOMES

Legacy Farms Estates *Gallivan*



4-6 Bedrooms 2.5-3.5 Bathrooms

This Home Features

Whirlpool Electric Range (White or Black)
Whirlpool Dishwasher (White or Black)
Whirlpool Microwave (White or Black)
Granite Countertops
Tile in Bathroom and Laundry
Moen Integra Faucet with Sprayer (Chrome)

9' Ceilings on Main Floor
Double Sinks in Master Bathroom
Two-tone paint
Front stone and James Hardie Exterior
Front Yard Landscaping with Sprinklers

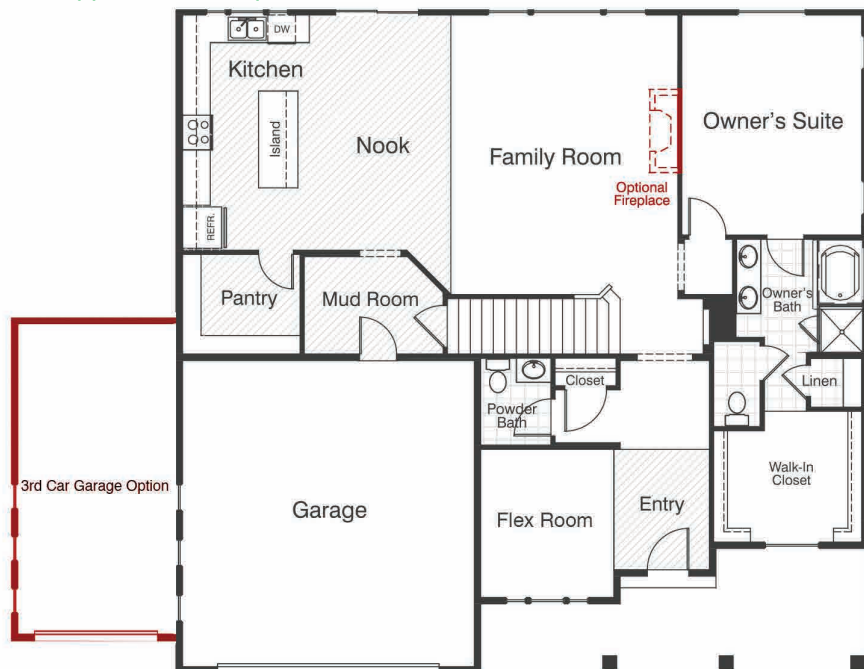
Approximate Finished Square Feet: 3,117
Approximate Total Square Feet: 4,729

FieldStone
HOMES

Legacy Farms Estates *Gallivan*

First Floor

Approx. 1,704 sq. ft.

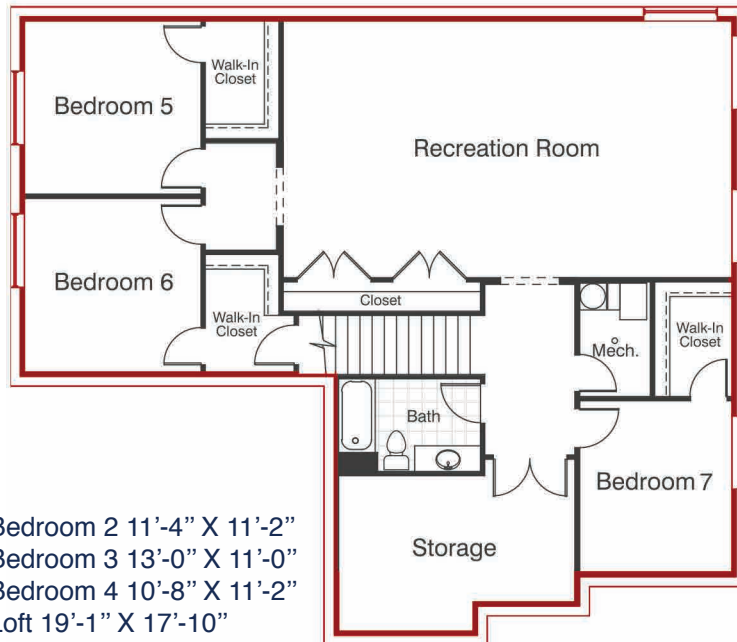


Kitchen 13'-9" X 17'-0"
 Nook 7'-8" X 17'-0"
 Family Room 14'-4" X 20'-2"
 Flex Room 9'-7" X 10'-8"
 Garage 21'-1" X 21'-11"
 Owner's Suite 13'-0" X 15'-11"
 Owner's Bath 9'-0" X 12'-5"

Recreation Room 30'-6" X 17'-5"
 Bedroom 5 10'-4" X 11'-8"
 Bedroom 6 12'-0" X 11'-9"
 Bedroom 7 12'-0" X 11'-9"

Basement

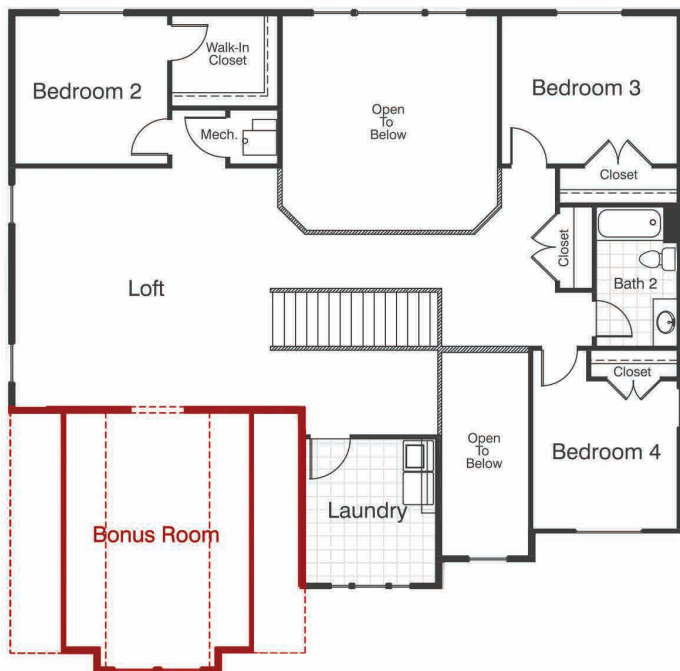
Approx. 1,612 sq. ft.



Bedroom 2 11'-4" X 11'-2"
 Bedroom 3 13'-0" X 11'-0"
 Bedroom 4 10'-8" X 11'-2"
 Loft 19'-1" X 17'-10"

Second Floor

Approx. 1,413sq. ft.



Legacy Farms Estates *Timpanogos*



5-6 Bedrooms 3.5-4.5 Bathrooms

This Home Features

Whirlpool Electric Range (White or Black)
Whirlpool Dishwasher (White or Black)
Whirlpool Microwave (White or Black)
Granite Countertops
Tile in Bathroom and Laundry
Moen Integra Faucet with Sprayer (Chrome)

9' Ceilings on Main Floor
Double Sinks in Master Bathroom
Two-tone paint
Front stone and James Hardie Exterior
Front Yard Landscaping with Sprinklers

Approximate Finished Square Feet: 3,024
Approximate Total Square Feet: 4,509

FieldStone
HOMES

Legacy Farms Estates *Timpanogos*

First Floor

Approx. 1,592 sq. ft.

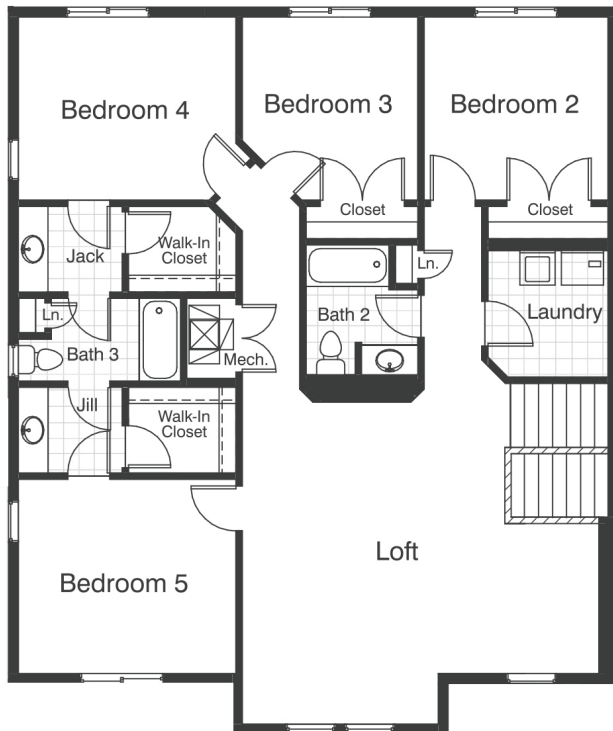


Kitchen 11'-9" X 15'-0"
 Nook 8'-0" X 15'-0"
 Family room 15'-6" X 20'-7"
 Garage 21'-0" X 20'-0"
 Owner's Suite 14'-0" X 14'-0"
 Owner's Bath 13'-6" X 14'-5"

Recreation Room 28'-4" X 36'-0"
 Bedroom 6 12'-5" X 15'-3"

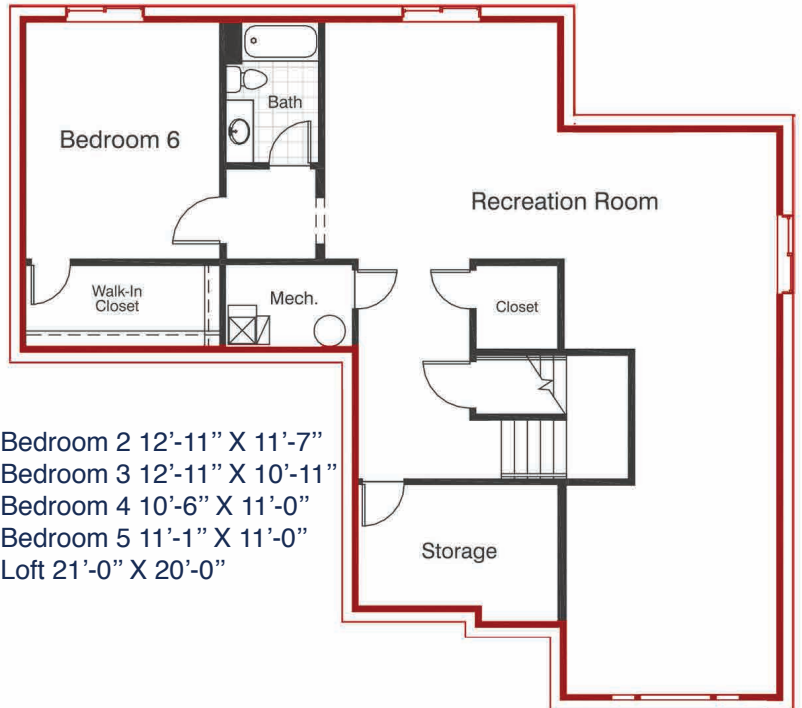
Second Floor

Approx. 1,432 sq. ft.



Basement

Approx. 1,485 sq. ft.



Bedroom 2 12'-11" X 11'-7"
 Bedroom 3 12'-11" X 10'-11"
 Bedroom 4 10'-6" X 11'-0"
 Bedroom 5 11'-1" X 11'-0"
 Loft 21'-0" X 20'-0"

*Home sq. ft. are approximate and are subject to change. Fieldstone Homes reserves the right to change or withdraw a floor plan without notice.