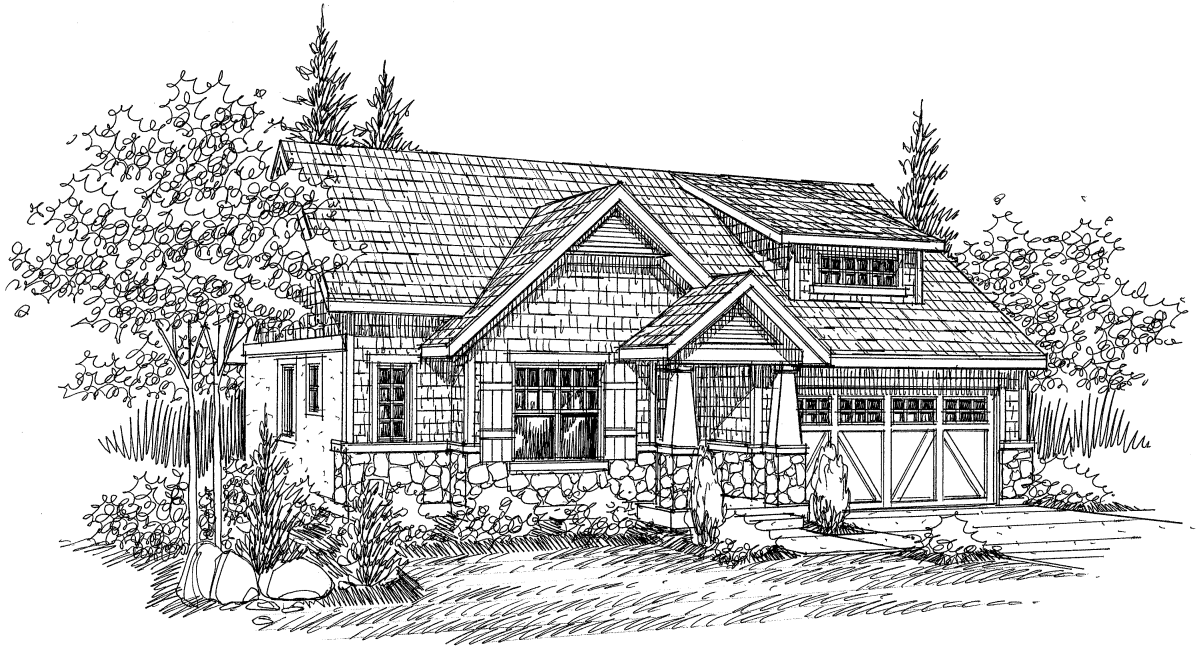
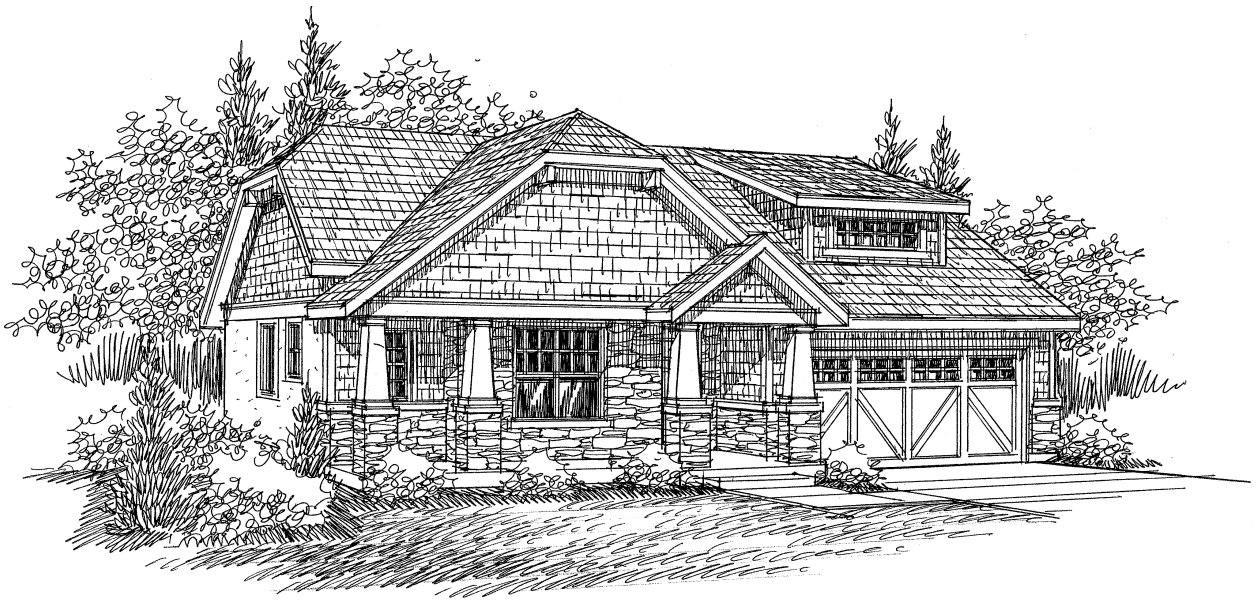


The Monterey Plan



Elevation A



Elevation B

John Phillips, *Principal Broker*
Phillips Real Estate 801-755-8200

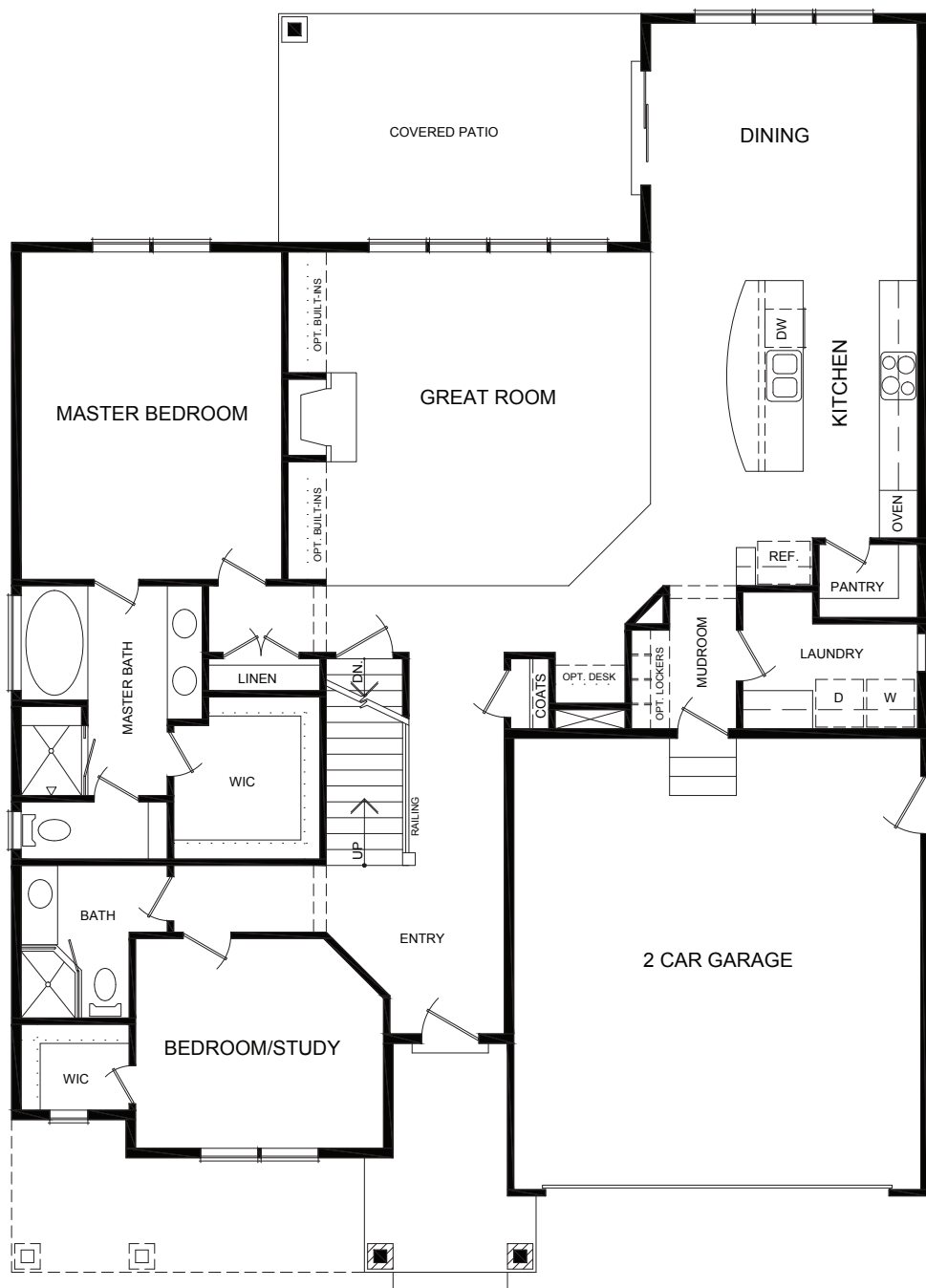


Phillips
HOMES

Actual floor plans and elevations may differ from those shown based on modifications, options, and improvements to the plans by the builder. Phillips Homes 2014©

WWW.PHILLIPSHOMES.COM

The Monterey Plan



SQUARE FEET

Main Floor 1,957
Unfin Bsmt 1,957

TOTAL SF 3,914

FEATURES

- Oversized 2-car Garage
- 2 Bedrooms
- 2 Baths
- Full Unfinished Basement
- Optional Built-ins
- Full landscaping & fencing
- 1-year Limited Warranty
- Open floor plan
- And much more!

John Phillips, *Principal Broker*

Phillips Real Estate 801-755-8200



Phillips
HOMES

Actual floor plans and elevations may differ from those shown based on modifications, options, and improvements to the plans by the builder. Phillips Homes 2014©

WWW.PHILLIPSHOMES.COM