



Home

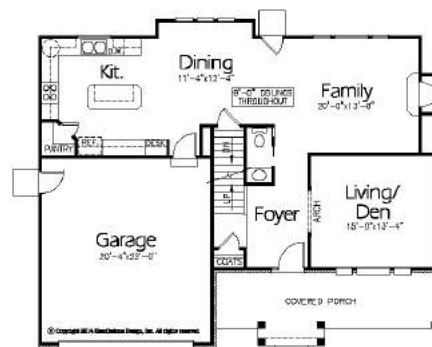
Plan: TS-2305b  
 Main: 1066 SF  
 Upper: 1240 SF  
 Unfinished Basement: 1279 SF  
 Total SF: 2385

**Description:**

- 4 Bedrooms + Den
- 2 & ½ Baths
- 2 Car Garage

**Optional Items:**

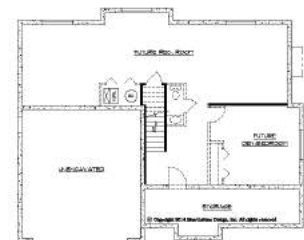
- 3 Car Garage
- Finished Basement
- Covered Porch/Patio



**Main Level**  
 1066 Sq. Feet  
 9' High Ceilings



**Upper Level**  
 1240 Sq. Feet



**Basement Level**  
 1279 Sq. Feet