



Home

Plan: TS-2305b

Main: 1066 SF

Upper: 1240 SF

Unfinished Basement: 1279 SF

Total SF: 2385

Description:

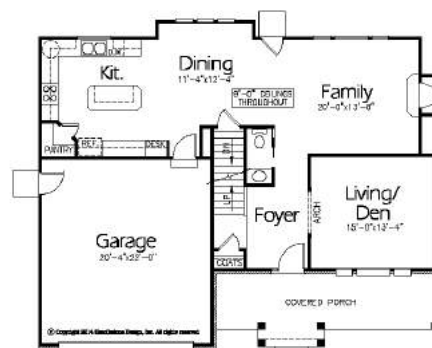
4 Bedrooms + Den

2 & ½ Baths

2 Car Garage

Optional Items:

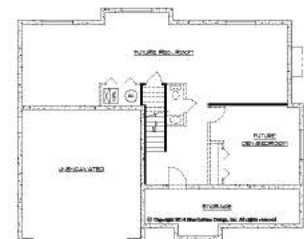
3 Car Garage Finished Basement Covered Porch/Patio



Main Level
1066 Sq. Feet
9' High Ceilings



Upper Level
1240 Sq. Feet



Basement Level
1279 Sq. Feet