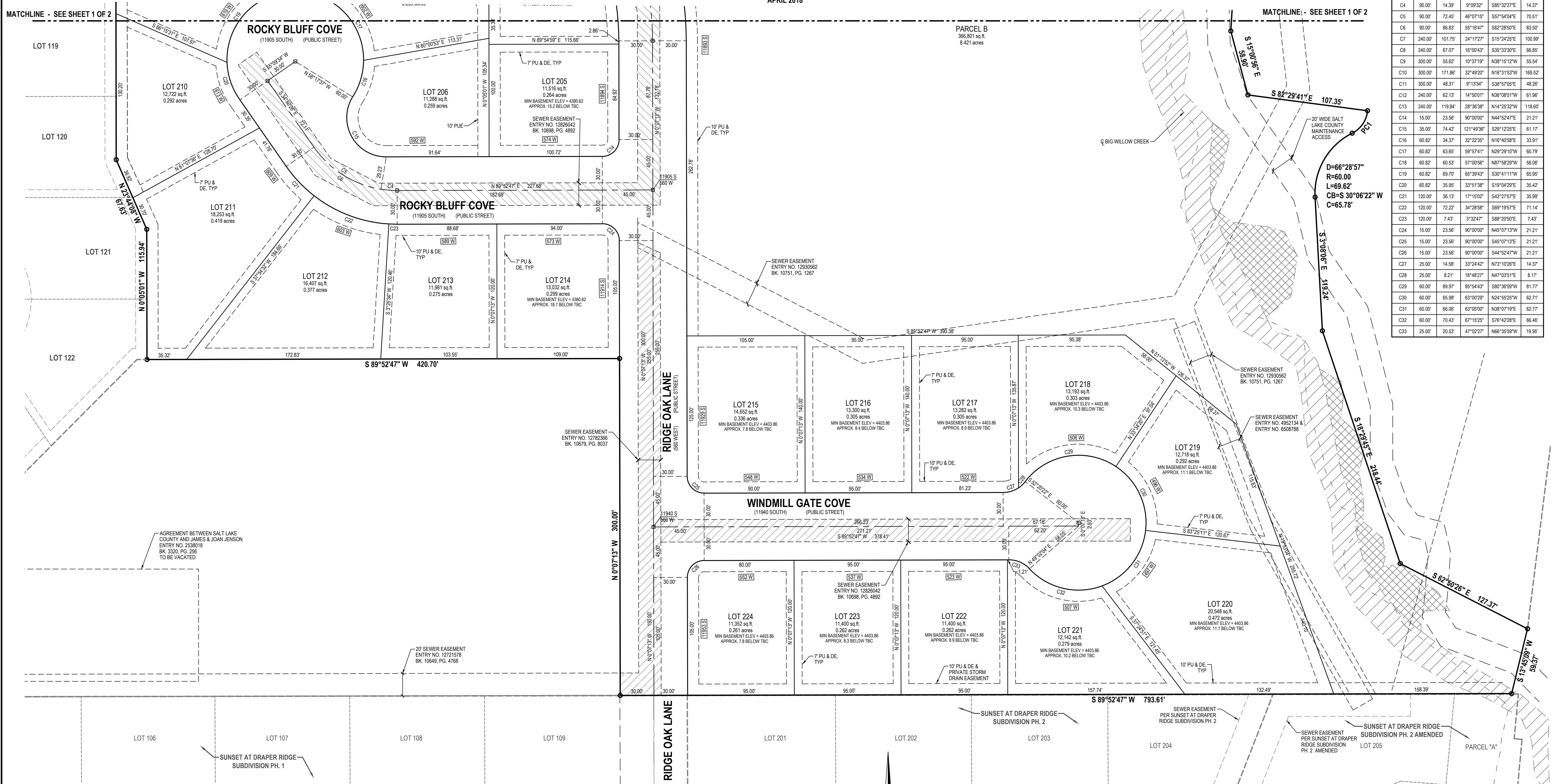


# JENSON FARMS PHASE 2 SUBDIVISION

LOCATED IN THE NORTHWEST QUARTER OF SECTION 25,  
TOWNSHIP 3 SOUTH, RANGE 1 WEST, SALT LAKE BASE & MERIDIAN  
DRAPER CITY, SALT LAKE COUNTY, UTAH  
APRIL 2018

CURVE TABLE					
CURVE	RADIUS	LENGTH	DELTA	BEARING	CHORD
PC1	25.00'	25.32'	58°10'23"	S34°19'49"W	24.25'

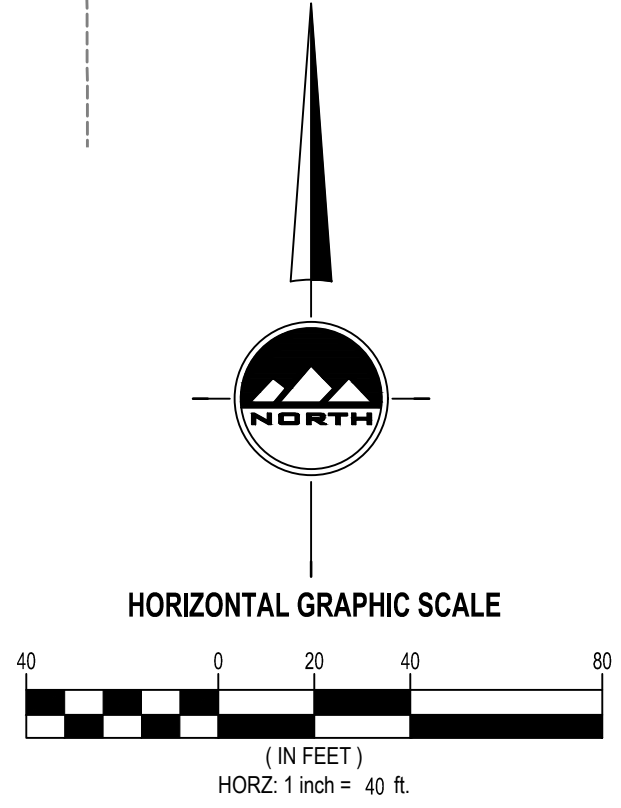
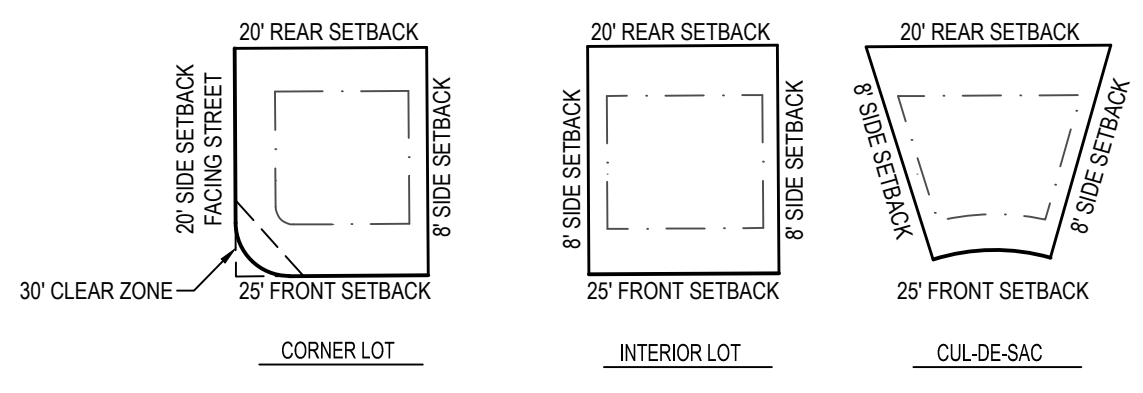
CURVE TABLE					
CURVE	RADIUS	LENGTH	DELTA	BEARING	CHORD
C2	270.00'	192.73'	40°53'54"	S23°06'55"E	188.66'
C3	270.00'	204.73'	43°26'39"	N21°50'32"W	199.86'
C4	90.00'	14.39'	9°09'32"	S85°32'27"E	14.37'
C5	90.00'	72.45'	46°07'15"	S57°54'04"E	70.51'
C6	90.00'	86.83'	55°16'47"	S62°28'50"E	83.50'
C7	240.00'	101.75'	24°17'27"	S15°24'25"E	100.99'
C8	240.00'	67.07'	16°00'43"	S35°33'30"E	66.85'
C9	300.00'	55.62'	10°37'19"	N38°15'12"W	55.54'
C10	300.00'	171.86'	32°49'20"	N16°31'53"W	169.52'
C11	300.00'	48.31'	9°13'34"	S38°57'05"E	48.26'
C12	240.00'	62.13'	14°50'01"	N36°08'51"W	61.96'
C13	240.00'	119.84'	28°36'38"	N14°25'32"E	118.60'
C14	15.00'	23.56'	90°00'00"	N44°52'47"E	21.21'
C15	35.00'	74.42'	121°49'36"	S29°12'25"E	61.17'
C16	60.82'	34.37'	32°22'35"	N16°40'58"E	33.91'
C17	60.82'	63.65'	59°57'41"	N29°29'10"W	60.79'
C18	60.82'	60.53'	57°00'56"	N87°38'29"W	58.06'
C19	60.82'	69.70'	65°39'43"	S30°41'11"W	65.95'
C20	60.82'	35.95'	33°51'38"	S19°04'29"E	35.42'
C21	120.00'	36.13'	17°15'02"	S43°27'57"E	35.99'
C22	120.00'	72.22'	34°28'58"	S69°19'57"E	71.14'
C23	120.00'	7.43'	3°32'47"	S88°20'50"E	7.43'
C24	15.00'	23.56'	90°00'00"	N45°07'13"W	21.21'
C25	15.00'	23.56'	90°00'00"	S45°07'13"E	21.21'
C26	15.00'	23.56'	90°00'00"	S44°52'47"W	21.21'
C27	25.00'	14.58'	33°24'42"	N73°10'26"E	14.37'
C28	25.00'	8.21'	18°48'27"	N47°03'51"E	8.17'
C29	60.00'	89.97'	85°54'43"	S80°36'59"W	81.77'
C30	60.00'	65.98'	63°00'29"	N24°55'25"W	62.71'
C31	60.00'	66.06'	63°05'00"	N38°07'19"E	62.77'
C32	60.00'	70.43'	67°15'25"	S78°42'28"E	66.46'
C33	25.00'	20.53'	47°02'27"	N66°35'59"W	19.95'



D=66°28'57"  
R=60.00'  
L=69.62'  
CB=S 30°06'22" W  
C=65.78'

**LEGEND**

	EXISTING STREET MONUMENT		BOUNDARY LINE
	PROPOSED STREET MONUMENT		SECTION LINE
	SECTION CORNER		CENTER LINE
	SET 5/8" REBAR WITH YELLOW PLASTIC CAP, OR NAIL STAMPED "ENSGN ENG. & LAND SURV."		EASEMENT LINE
	FEMA FLOOD ZONE "AE"- REGULATORY FLOODWAY		SETBACK LINE
	FEMA FLOOD ZONE "AE"- 1% ANNUAL CHANCE FLOOD HAZARD		



**ENSGN**

SALT LAKE CITY  
45 W. 10000 S., Suite 500  
Sandy, UT 84070  
Phone: 801.255.0529  
Fax: 801.255.4449  
WWW.ENSGN.COM

LAYTON  
Phone: 801.541.1100  
TOOELE  
Phone: 435.943.3590  
CEDAR CITY  
Phone: 435.865.1653  
RICHFIELD  
Phone: 435.866.2963

PROFESSIONAL LAND SURVEYOR  
No. 286882  
PATRICK M. HARRIS  
STATE OF UTAH

**JENSON FARMS PHASE 2 SUBDIVISION**

LOCATED IN THE NORTHWEST QUARTER OF SECTION 25,  
TOWNSHIP 3 SOUTH, RANGE 1 WEST, SALT LAKE BASE & MERIDIAN  
DRAPER CITY, SALT LAKE COUNTY, UTAH

RECORDED # \_\_\_\_\_

STATE OF UTAH, COUNTY OF SALT LAKE, RECORDED AND FILED AT THE  
REQUEST OF: \_\_\_\_\_

DATE: \_\_\_\_\_ TIME: \_\_\_\_\_ BOOK: \_\_\_\_\_ PAGE: \_\_\_\_\_

FEES \_\_\_\_\_ DEPUTY SALT LAKE COUNTY RECORDER

**SHEET 2 OF 2**

PROJECT NUMBER: 7074A  
MANAGER: ROE  
DRAWN BY: JNU  
CHECKED BY: KFW  
DATE: 2/7/19