

**concordhomes**

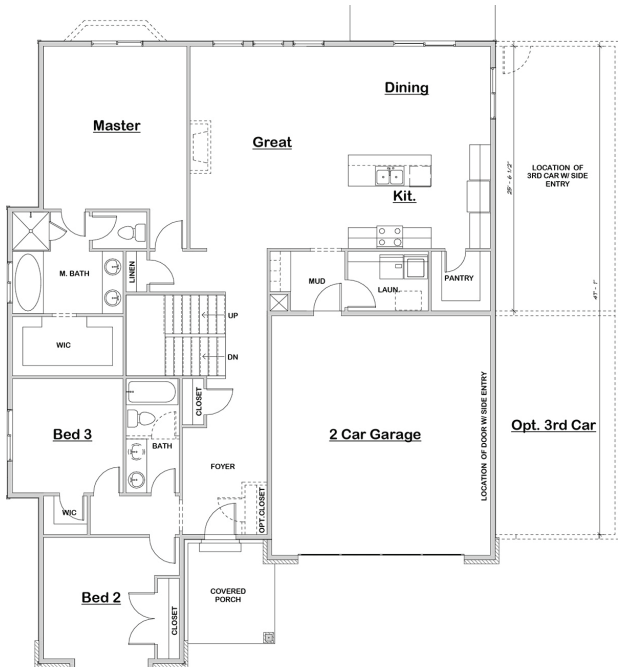
# THE CHERRYVILLE

RAMBLER

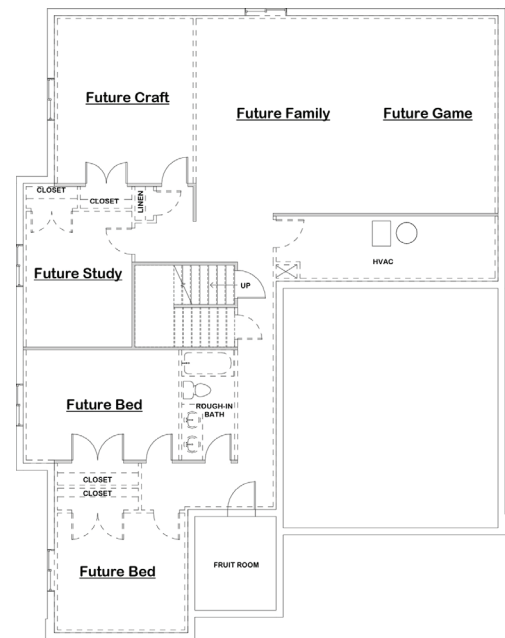
TOTAL SQ. FT. | **3,687** FINISHED SQ. FT. | **1,947**  
UNFINISHED SQ. FT. | **1,740** BEDS | **3** BATHS | **2.5**  
OPTIONAL BONUS ROOM | **369**



MAIN FLOOR



BASEMENT



Rev 3/20/17

**801.997.0837 • CONCORDHOMESUTAH.COM**

©Concord Homes. The use of these plans, drawings and renderings is expressly limited to Concord Homes. House design, floor plan, and exterior finish may not depict standard plan. All sizes shown are estimates only. Changes may occur without notice.





# THE CHERRYVILLE

## RAMBLER

### ELEVATION CHOICES

#### HOME FEATURES

- Walk-In Closets
- Plant Shelves
- 9' Ceilings on Main Floor
- Cold Storage Room
- Optional Bonus Room
- Walk In Laundry
- 8' Garage Door w/ Opener
- Separate Shower w/Garden Tub in Master
- Custom Covered Porch
- Walk In Pantry
- Optional Bonus Room 369 sq. ft.



Rev 3/20/17

**801.997.0837 • CONCORDHOMESUTAH.COM**

©Concord Homes. The use of these plans, drawings and renderings is expressly limited to Concord Homes. House design, floor plan, and exterior finish may not depict standard plan. All sizes shown are estimates only. Changes may occur without notice.