

concordhomes

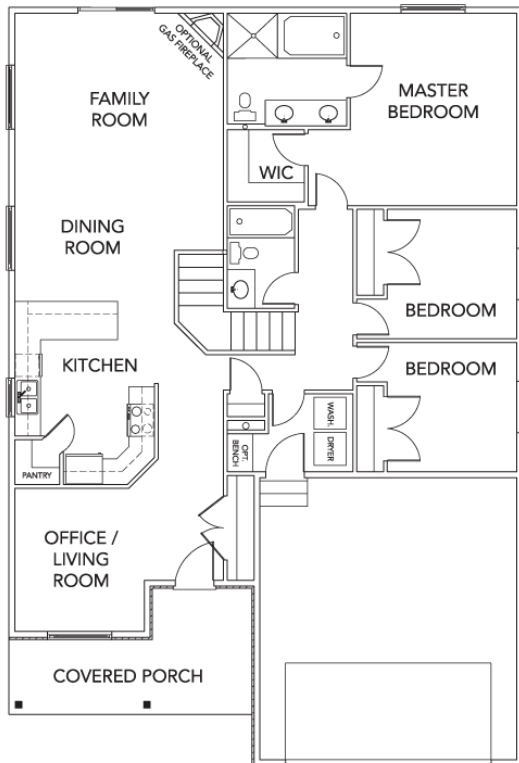
THE ASHEVILLE

RAMBLER

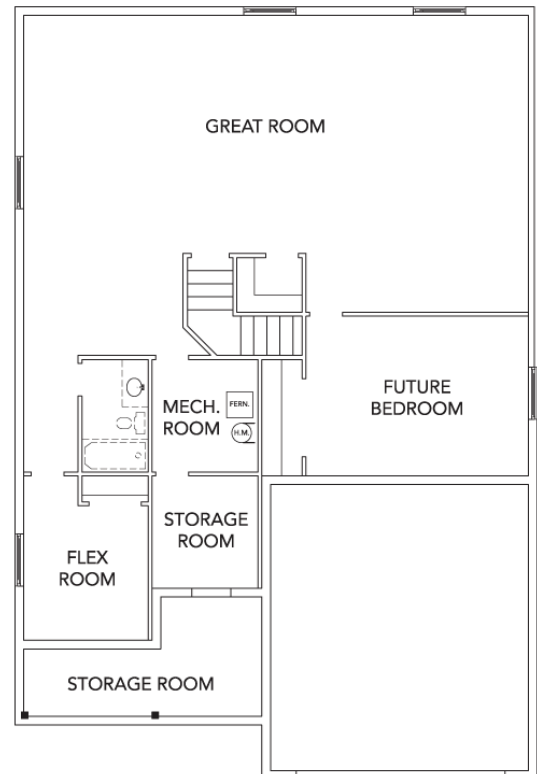
TOTAL SQ. FT. | **3,710** FINISHED SQ. FT. | **1,729**
UNFINISHED SQ. FT. | **1,981** BEDS | **3** BATHS | **2**



MAIN FLOOR



BASEMENT



Rev 3/20/17

801.997.0837 • CONCORDHOMESUTAH.COM

©Concord Homes. The use of these plans, drawings and renderings is expressly limited to Concord Homes. House design, floor plan, and exterior finish may not depict standard plan. All sizes shown are estimates only. Changes may occur without notice.



THE ASHEVILLE

RAMBLER

ELEVATION CHOICES

HOME FEATURES

- Spacious Covered Porch
- 9 Ceilings on Main Floor
- Office/Living Room Space
- Spacious Kitchen
- Lots of Kitchen Counter Space
- Large Kitchen Bar
- Large Cold Storage
- Open Living Area
- Mud Room
- Separate Shower W/ Garden Tub in Master Bath
- Walk-In Closet in Master
- Dual Vanity in Master Bath
- 3 Elevations To Choose From



Rev 3/20/17

801.997.0837 • CONCORDHOMESUTAH.COM

©Concord Homes. The use of these plans, drawings and renderings is expressly limited to Concord Homes. House design, floor plan, and exterior finish may not depict standard plan. All sizes shown are estimates only. Changes may occur without notice.