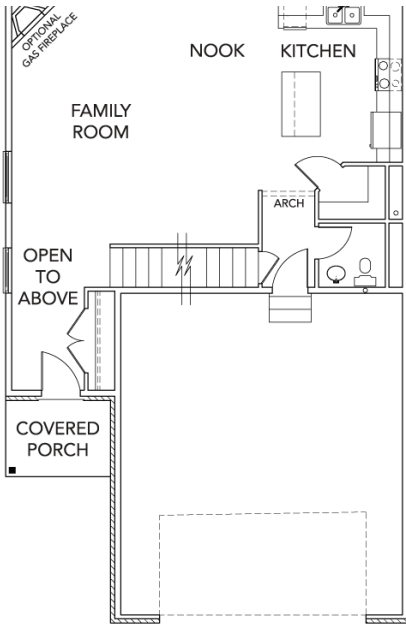


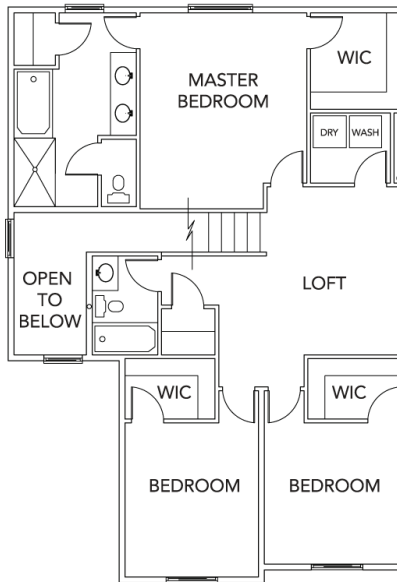


# Melbourne | Two Story

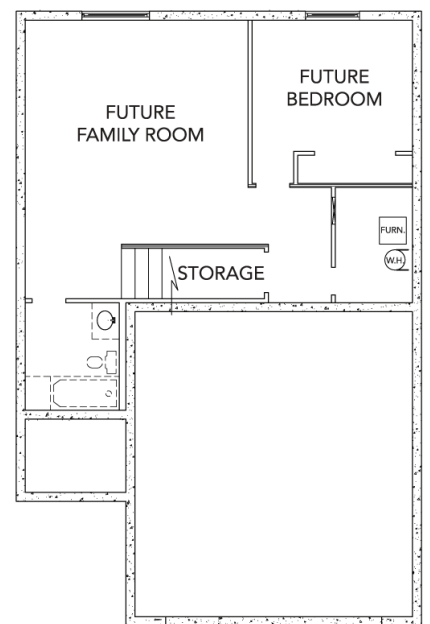
TOTAL SQ. FT. | **2,498** FINISHED SQ. FT. | **1,761**  
 UNFINISHED SQ. FT. | **737** BEDS | **3** BATHS | **2.5**



MAIN FLOOR



UPPER FLOOR



BASEMENT

Rev 7/13/18

**801.997.0837 • CONCORDHOMESUTAH.COM**

©Concord Homes. The use of these plans, drawings and renderings is expressly limited to Concord Homes. House design, floor plan, and exterior finish may not depict standard plan. All sizes shown are estimates only. Changes may occur without notice.





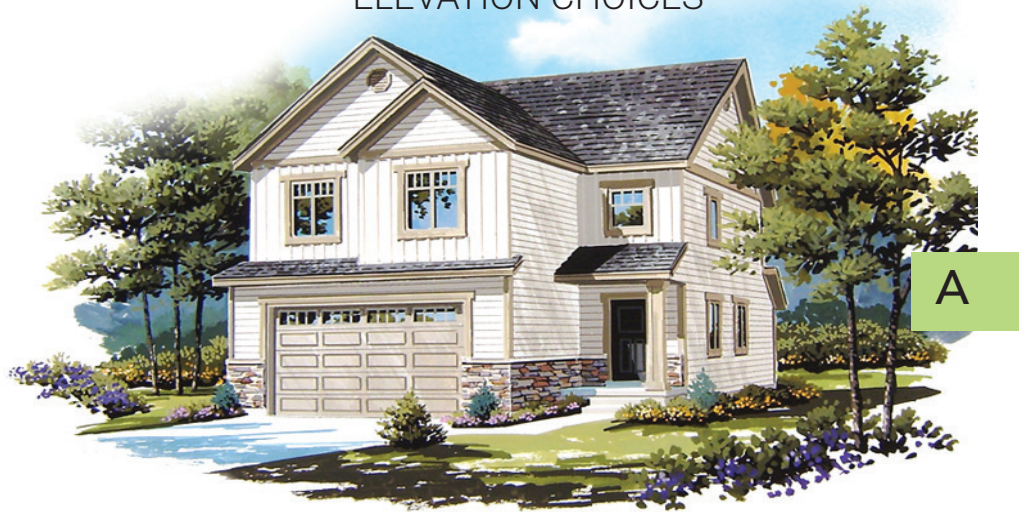
# Melbourne | Two Story

TOTAL SQ. FT. | **2,498** FINISHED SQ. FT. | **1,761**  
UNFINISHED SQ. FT. | **737** BEDS | **3** BATHS | **2.5**

## ELEVATION CHOICES

### HOME FEATURES

- Open Floor Plan
- Covered Porch
- Kitchen Island
- Large Pantry
- Nook Pop Out
- Lots of Kitchen Counter Space
- Half Bath on Main
- Spacious Family Room
- 2 Story Front Entry
- Upstairs Loft
- Large Walk-In Closets in All Bedrooms
- Separate Shower and Garden Tub in Master
- Upstairs Laundry
- Linen Closet in Master Bath
- 9' Ceilings on Main
- Ample Storage Area Throughout Home
- 3 Exteriors to Choose From



Rev 7/13/18

**801.997.0837 • CONCORDHOMESUTAH.COM**

©Concord Homes. The use of these plans, drawings and renderings is expressly limited to Concord Homes. House design, floor plan, and exterior finish may not depict standard plan. All sizes shown are estimates only. Changes may occur without notice.