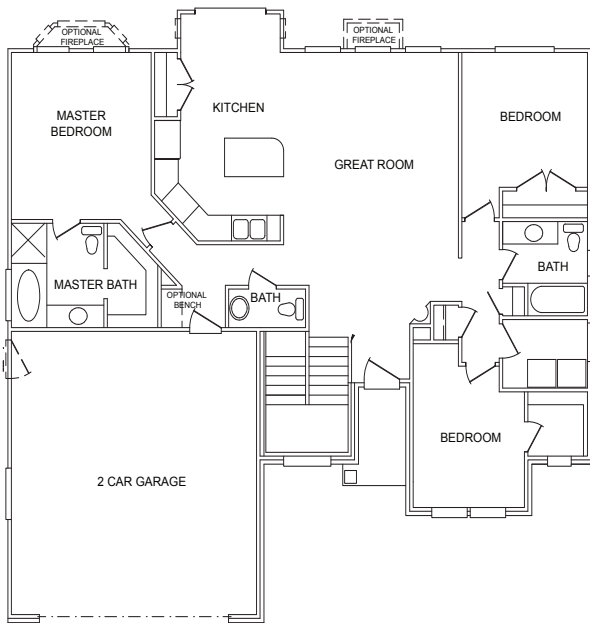


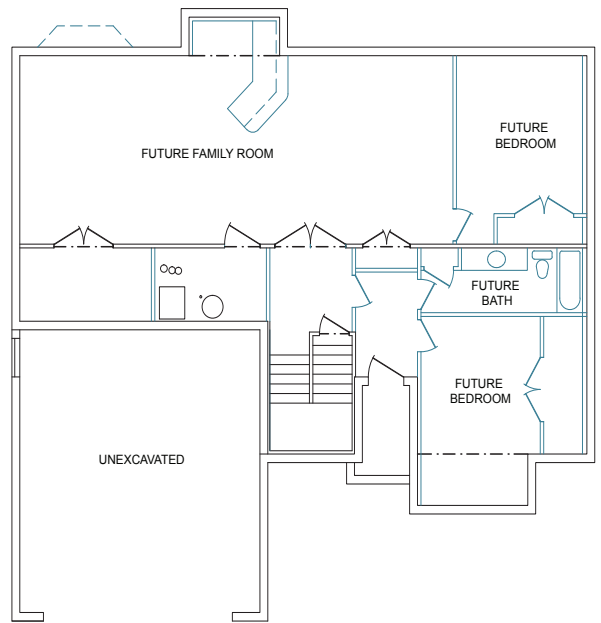
concordhomes

Goldsboro | Rambler

TOTAL SQ. FT. | **2,896** FINISHED SQ. FT. | **1,432**
UN FINISHED SQ. FT. | **1,464** BEDS | **3** BATHS | **2.5**



MAIN FLOOR



BASEMENT

Rev 9/13/18

801.997.0837 • CONCORDHOMESUTAH.COM

©Concord Homes. The use of these plans, drawings and renderings is expressly limited to Concord Homes. House design, floor plan, and exterior finish may not depict standard plan. All sizes shown are estimates only. Changes may occur without notice.



Goldsboro | Rambler

TOTAL SQ. FT. | **2,896** FINISHED SQ. FT. | **1,432**
UN FINISHED SQ. FT. | **1,464** BEDS | **3** BATHS | **2.5**

HOME FEATURES

- Walk-In Closets
- Optional 4 Car Capacity Garage
- Main Floor Laundry
- 9' Ceilings on Main Floor
- Separate Shower w/ Garden Tub in Master Bath
- Bay/Nook in Dining
- Cold Storage Room
- Covered Porch

ELEVATION CHOICES



Rev 9/13/18

801.997.0837 • CONCORDHOMESUTAH.COM

©Concord Homes. The use of these plans, drawings and renderings is expressly limited to Concord Homes. House design, floor plan, and exterior finish may not depict standard plan. All sizes shown are estimates only. Changes may occur without notice.