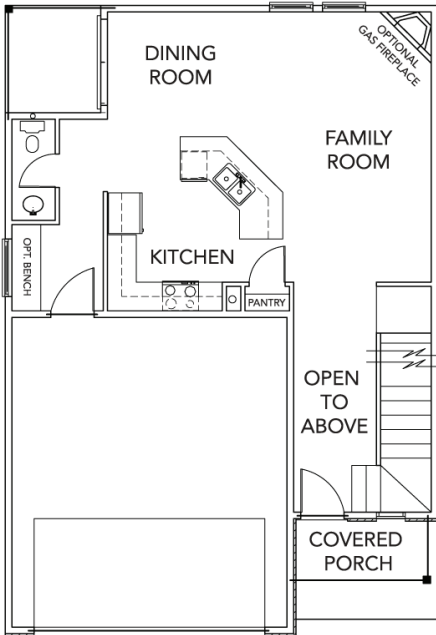


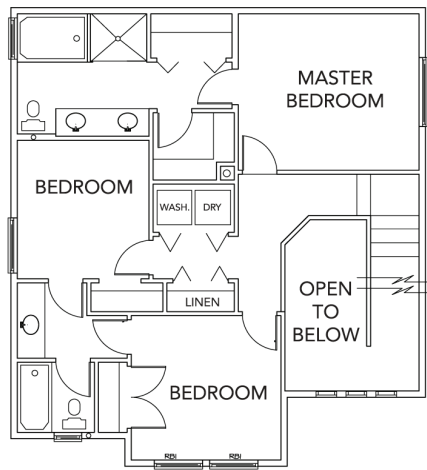


Durham | Two Story

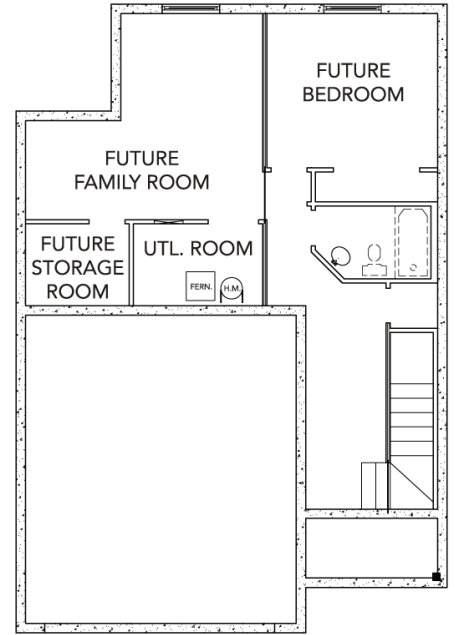
TOTAL SQ. FT. | 2,542 FINISHED SQ. FT. | 1,642
 UNFINISHED SQ. FT. | 900 BEDS | 3 BATHS | 2.5



MAIN FLOOR



UPPER FLOOR



BASEMENT

Rev 7/13/18

801.997.0837 • CONCORDHOMESUTAH.COM

©Concord Homes. The use of these plans, drawings and renderings is expressly limited to Concord Homes. House design, floor plan, and exterior finish may not depict standard plan. All sizes shown are estimates only. Changes may occur without notice.



Durham | Two Story

TOTAL SQ. FT. | **2,542** FINISHED SQ. FT. | **1,642**
UNFINISHED SQ. FT. | **900** BEDS | **3** BATHS | **2.5**

ELEVATION CHOICES

HOME FEATURES

- Entertainment Kitchen
- Half Bath on Main
- 2 Story Entry
- Large Butterfly Island
- Lots of Counter Space
- 9' Ceilings on Main Floor
- Covered Porch Large Mud Room
- Master His and Her's Closet
- Jack and Jill Bath
- Garden Tub and Separate Shower in Master
- Dual Vanity in Master Bath
- Upstairs Laundry Room
- 3 Elevations To Choose From



Rev 7/13/18

801.997.0837 • CONCORDHOMESUTAH.COM

©Concord Homes. The use of these plans, drawings and renderings is expressly limited to Concord Homes. House design, floor plan, and exterior finish may not depict standard plan. All sizes shown are estimates only. Changes may occur without notice.