



RIVERWALK
NEW HOMES



Main Level: 1,655 Sq. Ft.

0 - 1 Bedroom

1/2 - 1 1/2 Baths

3-Car Garage

Total Base Plan:

4,819 Sq. Ft.

3 - 7 Bedrooms

2 1/2 - 5 1/2 Baths

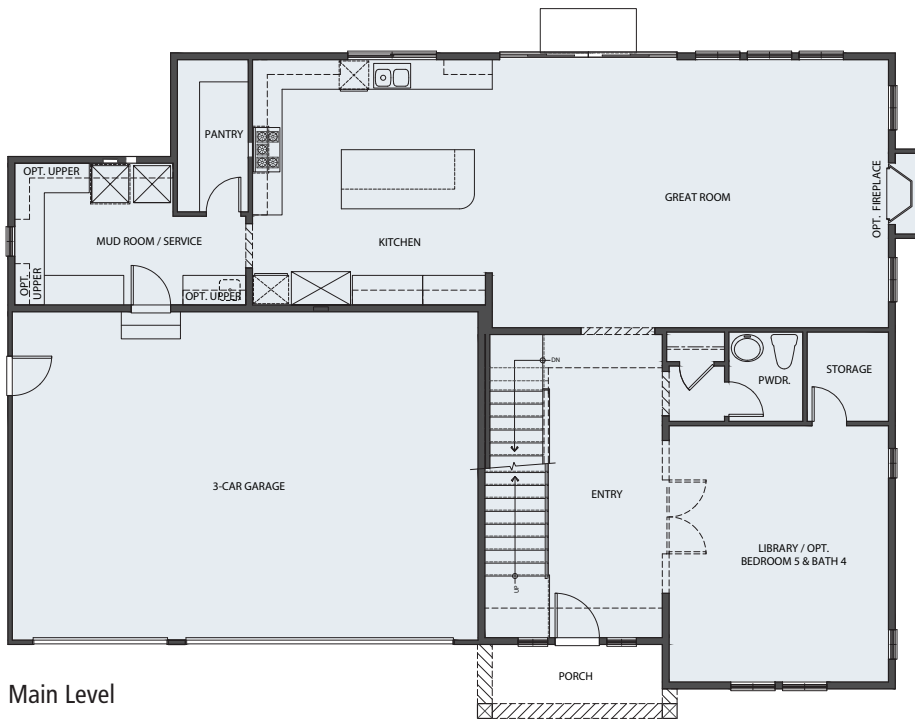
Finished Base Plan:

3,089 Sq. Ft.

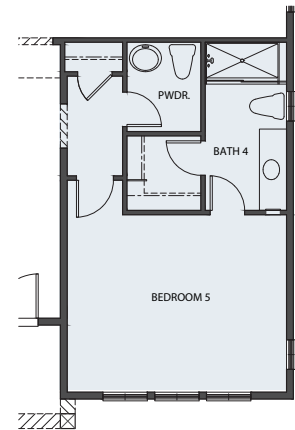
3 - 5 Bedrooms

2 1/2 - 4 1/2 Baths

ROCKPORT . MAIN LEVEL



Main Level



Bedroom 5 & Bath 4 Option



RIVERWALK
NEW HOMES

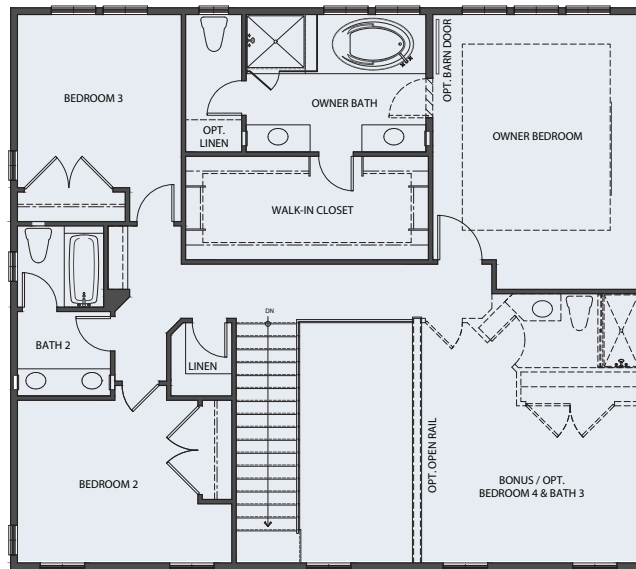


Upper Level: 1,434 Sq. Ft.
3 - 4 Bedrooms
2 - 3 Baths

Finished Base Plan:
3,089 Sq. Ft.
3 - 5 Bedrooms
2½ - 4½ Baths

Total Base Plan:
4,819 Sq. Ft.
3 - 7 Bedrooms
2½ - 5½ Baths

ROCKPORT . UPPER LEVEL



Upper Level



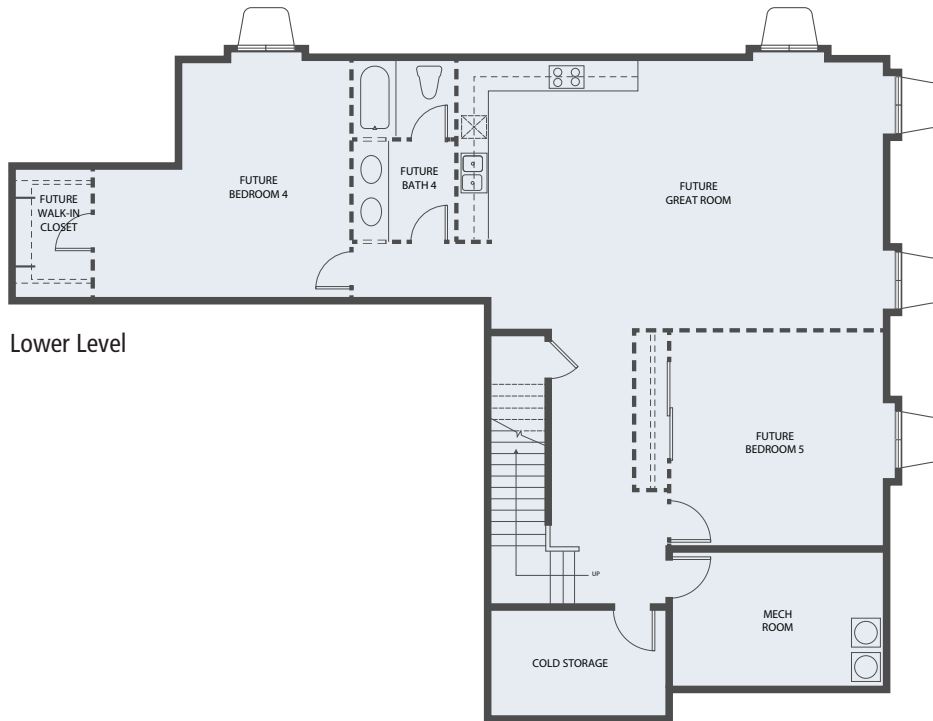
RIVERWALK
NEW HOMES

Lower Level: 1,730 Sq. Ft.
0 - 2 Bedrooms
0 - 1 Bath

Finished Base Plan:
3,089 Sq. Ft.
3 - 5 Bedrooms
2½ - 4½ Baths

Total Base Plan:
4,819 Sq. Ft.
3 - 7 Bedrooms
2½ - 5½ Baths

ROCKPORT . LOWER LEVEL



Lower Level



Total Base Plan:
4,819 Sq. Ft.
3 - 7 Bedrooms
2½ - 5½ Baths

Finished Base Plan:
3,089 Sq. Ft.
3 - 5 Bedrooms
2½ - 4½ Baths

RIVERWALK
NEW HOMES



ROCKPORT . ELEVATION



Farmhouse