

HARVEST PARK

GRANDVIEW Residence 40223

APPROX. 2,230-3,254 SQ. FT. | TWO-STORY

4-5 BEDROOMS | 2.5-3.5 BATHROOMS | 2-3 BAY GARAGE



ELEVATION A



ELEVATION B



ELEVATION C

801.653.3985

CenturyCommunities.com/Utah



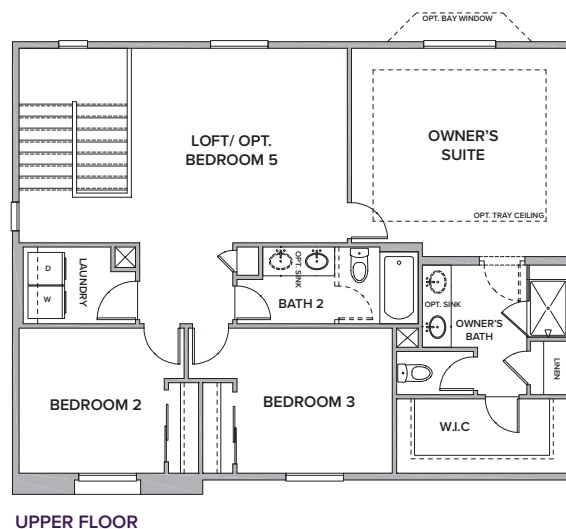
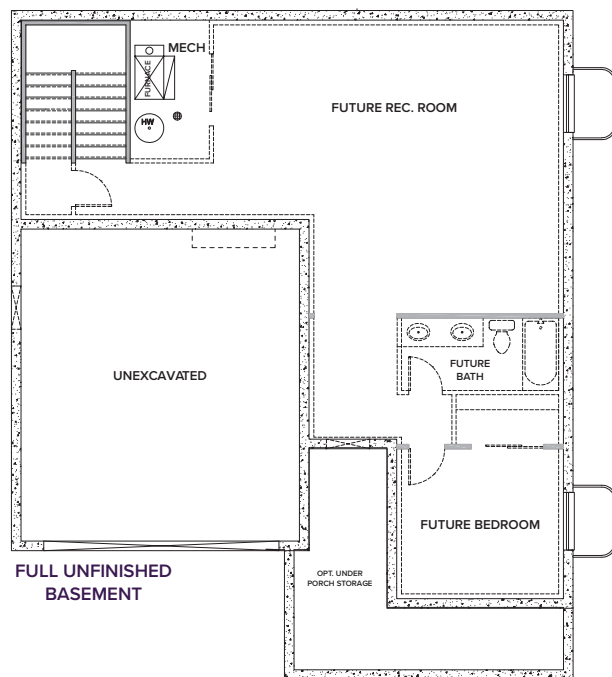
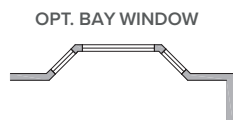
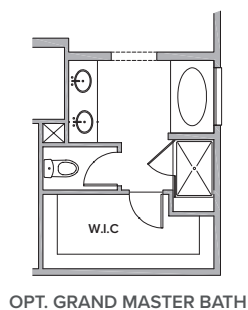
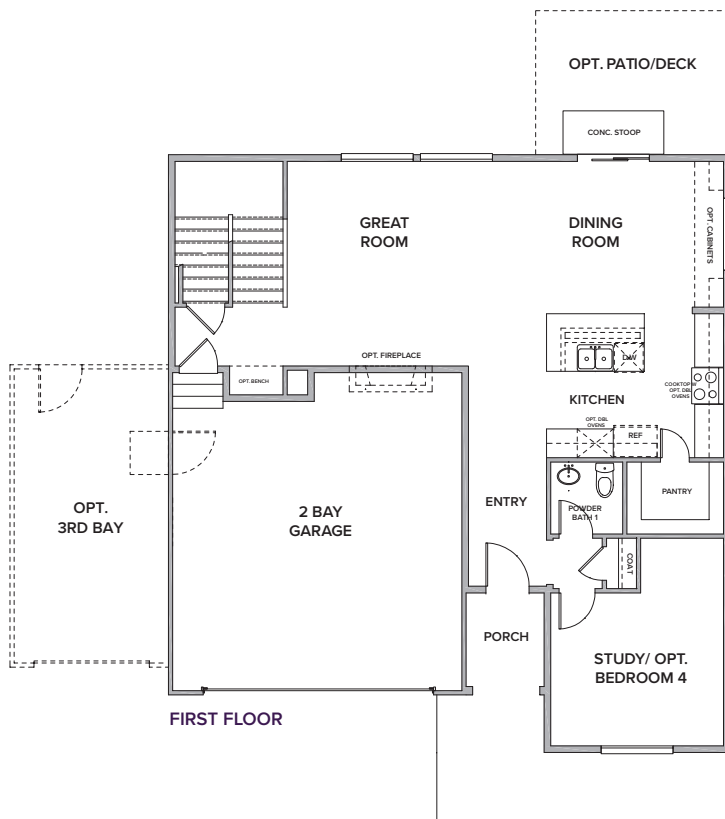
Price, plans and terms are effective on the date of publication and subject to change without notice. Depictions of homes or other features are conceptual. Decorative items and other items shown may be decorator suggestions that are not included in the purchase price and availability may vary. Persons in photos do not reflect racial preference and housing is open to all without regard to race, color, religion, sex, handicap, familial status, or national origin. ©2018 Century Communities.

HARVEST PARK

GRANDVIEW Residence 40223

APPROX. 2,230-3,254 SQ. FT. | TWO-STORY

4-5 BEDROOMS | 2.5-3.5 BATHROOMS | 2-3 BAY GARAGE



801.653.3985

CenturyCommunities.com/Utah



Price, plans and terms are effective on the date of publication and subject to change without notice. Depictions of homes or other features are conceptual. Decorative items and other items shown may be decorator suggestions that are not included in the purchase price and availability may vary. Persons in photos do not reflect racial preference and housing is open to all without regard to race, color, religion, sex, handicap, familial status, or national origin. ©2018 Century Communities.