

PLAN NUMBER: 1472



STYLE: Rambler

APPROX SQ FT: 2934

BEDROOMS: 3

BATHS: 2

GARAGE: 3 Car

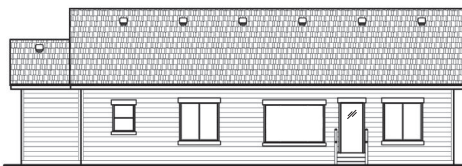
ELEVATION A



ELEVATION A - IS FULL SIDING WITH BOARD & BATTON ON THE EAVES AND IS STANDARD IN THE ANDERSON FARMS SUBDIVISION.



LEFT SIDE



BACK



RIGHT SIDE

AVAILABLE ELEVATIONS

ELEVATION B



SIDING WITH
3 FT WAINSCOT AND 2 FT KICKBACK
ON FRONT ONLY

ELEVATION C



STONE AND STUCCO EXTERIOR
ON FRONT ONLY

ELEVATION D



STONE AND STUCCO EXTERIOR
ON ENTIRE HOME

Hardy/Stone options available upon request

DISCLAIMER: These images are for illustrative purposes only. Image(s) may include optional upgrades at additional cost. All renderings, elevations, and floorplans are conceptual drawings and may not accurately represent the actual condition or look of a home as constructed. Photos and/or drawings show landscaping which is not offered by Wise Homes. Square footage numbers are approximate and should be verified by the buyer and buyer's agent. Options and features may not be available on all homes or in all communities. Wise Homes reserves the right to make changes to any and/or all floor plans, options, specifications, dimensions, designs and elevations without prior notice. Wise Homes is an equal housing opportunity builder.

MAIN FLOOR

APPROX SQ FT: 1472

BEDROOMS: 3

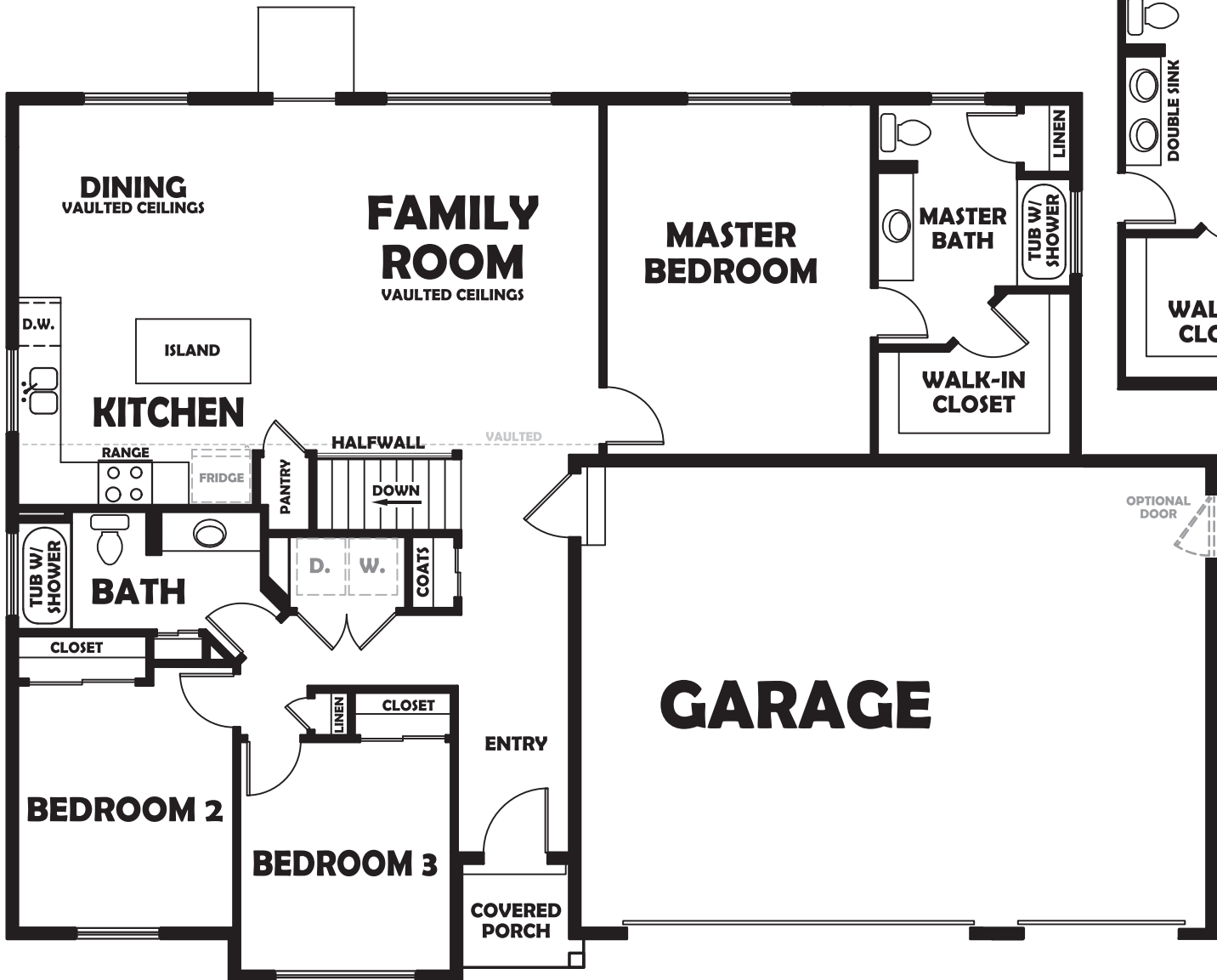
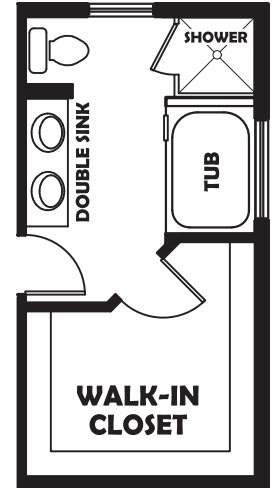
BATHS: 2

GARAGE: 3 Car

The Wallace is a ranch-style home that offers an open floor plan perfect for entertaining. The master bedroom features a walk-in closet and private bath. Grand master bath optional upgrades shown below.

Ask for more details about this plan

GRAND MASTER BATH OPTION



The fridge, washer, and dryer are NOT included. They are included on this floorplan for placement purposes only.

DISCLAIMER: These images are for illustrative purposes only. Image(s) may include optional upgrades at additional cost. All renderings, elevations, and floorplans are conceptual drawings and may not accurately represent the actual condition or look of a home as constructed. Photos and/or drawings show landscaping which is not offered by Wise Homes. Square footage numbers are approximate and should be verified by the buyer and buyer's agent. Options and features may not be available on all homes or in all communities. Wise Homes reserves the right to make changes to any and/or all floor plans, options, specifications, dimensions, designs and elevations without prior notice. Wise Homes is an equal housing opportunity builder.

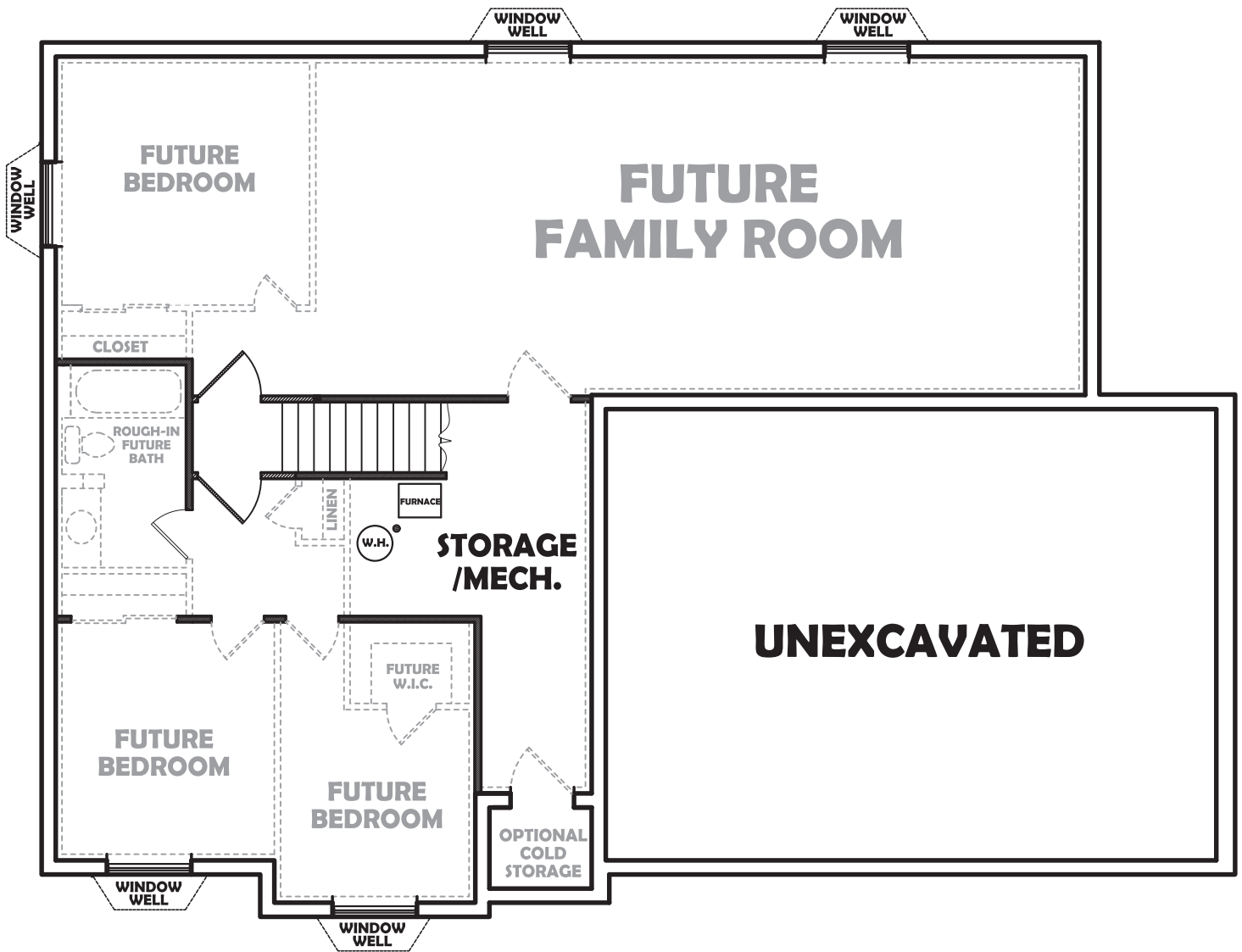
BASEMENT

APPROX SQ FT: 1462

BEDROOMS: 2 Future

BATHS: 1 Future

Wise Homes' basements are unfinished, exterior walls are insulated, & bearing walls are framed. The future bathroom has been rough plumbed. (Light gray walls and features have been added below to show the optional buildout.)



DISCLAIMER: These images are for illustrative purposes only. Image(s) may include optional upgrades at additional cost. All renderings, elevations, and floorplans are conceptual drawings and may not accurately represent the actual condition or look of a home as constructed. Photos and/or drawings show landscaping which is not offered by Wise Homes. Square footage numbers are approximate and should be verified by the buyer and buyer's agent. Options and features may not be available on all homes or in all communities. Wise Homes reserves the right to make changes to any and/or all floor plans, options, specifications, dimensions, designs and elevations without prior notice. Wise Homes is an equal housing opportunity builder.