

PLAN NUMBER: 1440



STYLE: Rambler

APPROX SQ FT: 2870

BEDROOMS: 3

BATHS: 2

GARAGE: 3 Car

ELEVATION A



ELEVATION A - IS FULL SIDING WITH BOARD & BATTON ON THE EAVES AND IS STANDARD IN THE ANDERSON FARMS SUBDIVISION



LEFT SIDE



BACK



RIGHT SIDE

AVAILABLE ELEVATIONS

ELEVATION B



SIDING WITH
3 FT WAINSCOT AND 2 FT KICKBACK
ON FRONT ONLY

ELEVATION C



STONE AND STUCCO EXTERIOR
ON FRONT ONLY

ELEVATION D



STONE AND STUCCO EXTERIOR
ON ENTIRE HOME

Hardy/Stone options available upon request

DISCLAIMER: These images are for illustrative purposes only. Image(s) may include optional upgrades at additional cost. All renderings, elevations, and floorplans are conceptual drawings and may not accurately represent the actual condition or look of a home as constructed. Photos and/or drawings show landscaping which is not offered by Wise Homes. Square footage numbers are approximate and should be verified by the buyer and buyer's agent. Options and features may not be available on all homes or in all communities. Wise Homes reserves the right to make changes to any and/or all floor plans, options, specifications, dimensions, designs and elevations without prior notice. Wise Homes is an equal housing opportunity builder.

MAIN FLOOR

APPROX SQ FT: 1440

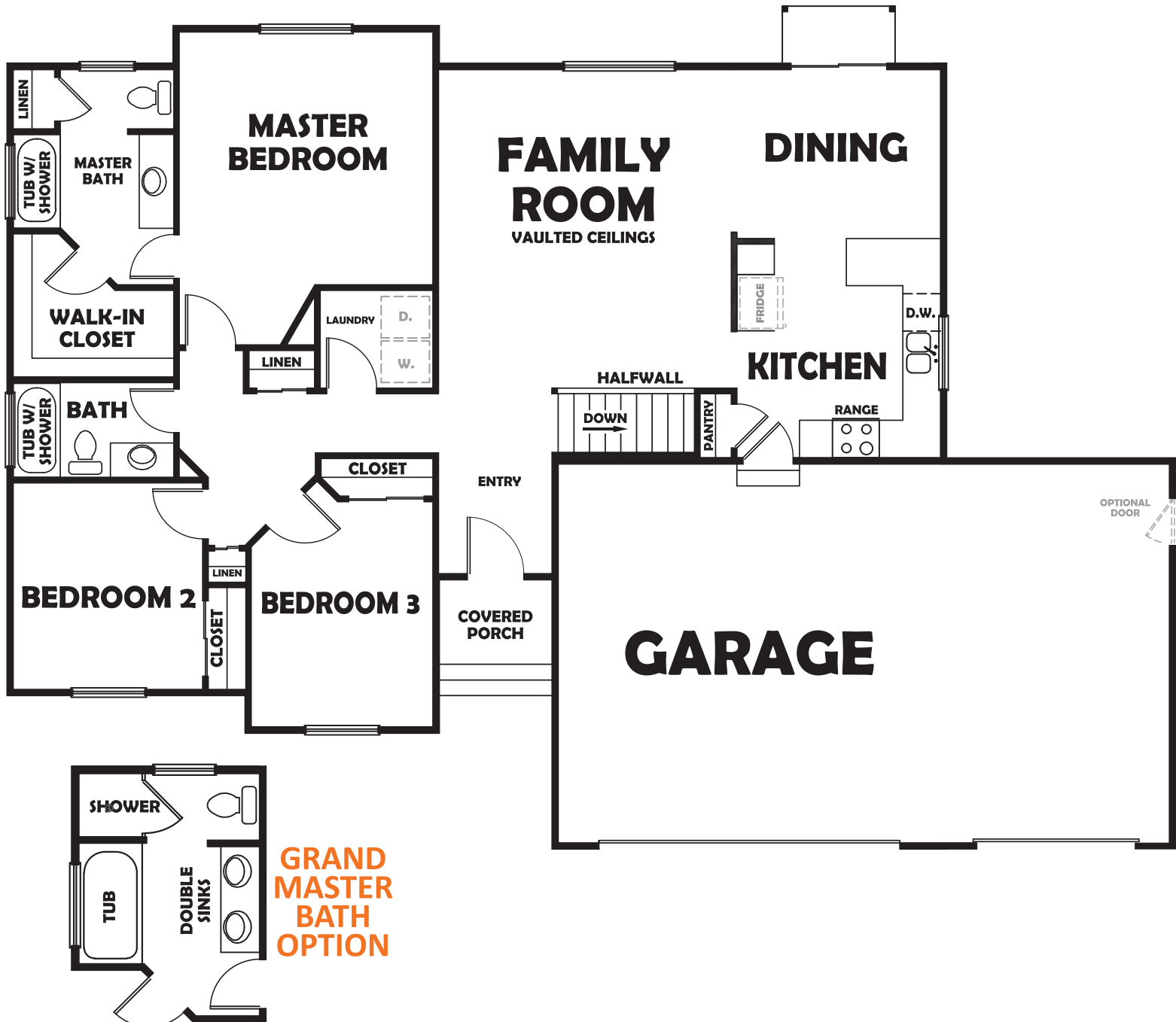
BEDROOMS: 3

BATHS: 2

GARAGE: 3 Car

The Santa Marta is a ranch-style home that offers an open floor plan perfect for entertaining. The master bedroom features a walk-in closet and private bath. The Grand master Bath option is shown below.

Ask for more details about this plan



The fridge, washer, and dryer are NOT included. They are included on this floorplan for placement purposes only.

DISCLAIMER: These images are for illustrative purposes only. Image(s) may include optional upgrades at additional cost. All renderings, elevations, and floorplans are conceptual drawings and may not accurately represent the actual condition or look of a home as constructed. Photos and/or drawings show landscaping which is not offered by Wise Homes. Square footage numbers are approximate and should be verified by the buyer and buyer's agent. Options and features may not be available on all homes or in all communities. Wise Homes reserves the right to make changes to any and/or all floor plans, options, specifications, dimensions, designs and elevations without prior notice. Wise Homes is an equal housing opportunity builder.

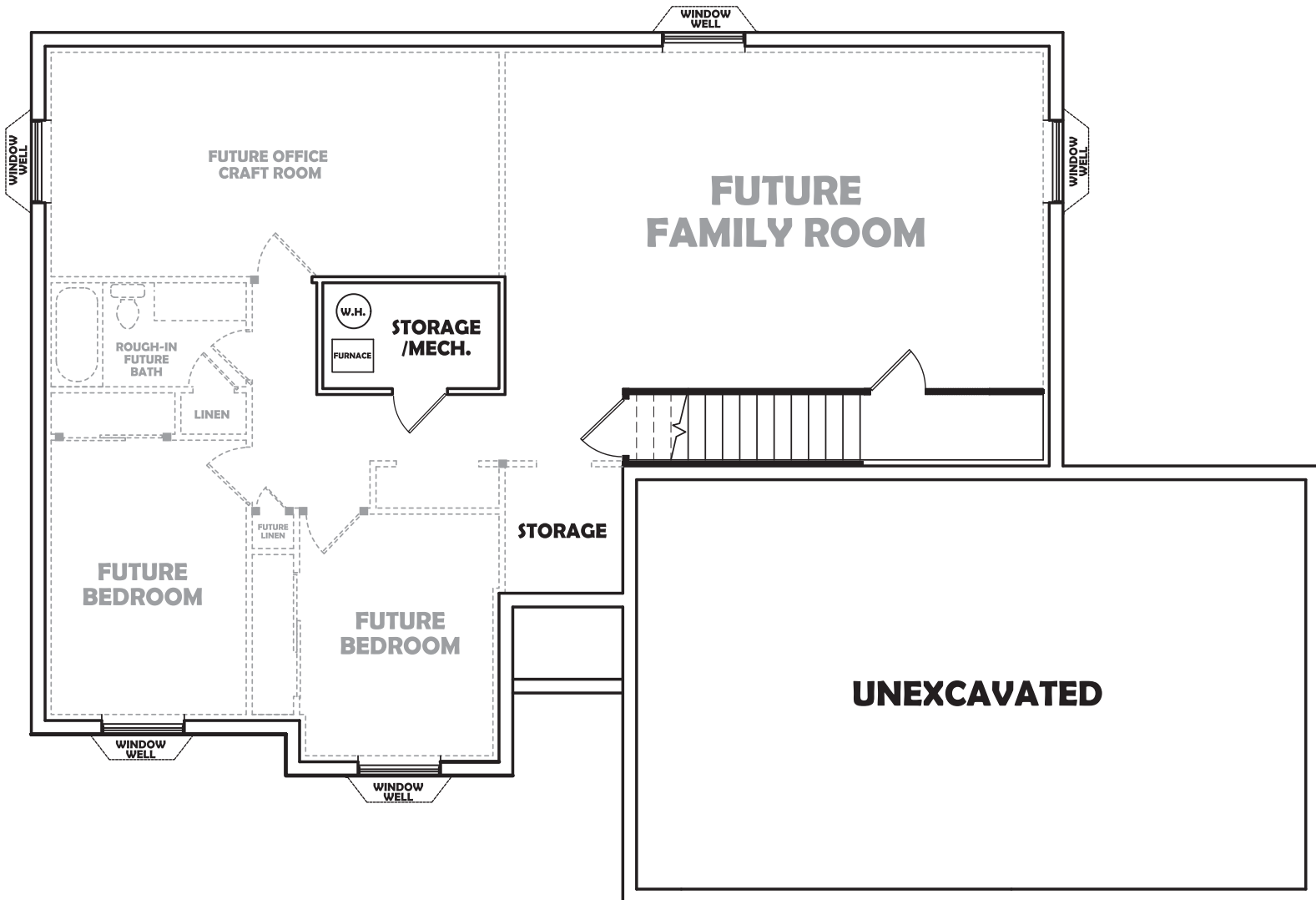
BASEMENT

APPROX SQ FT: 1430

BEDROOMS: 2 Future

BATHS: 1 Future

Wise Homes' basements are unfinished, exterior walls are insulated, & bearing walls are framed. The future bathroom has been rough plumbed. (Light gray walls and features have been added below to show the optional buildout.)



DISCLAIMER: These images are for illustrative purposes only. Image(s) may include optional upgrades at additional cost. All renderings, elevations, and floorplans are conceptual drawings and may not accurately represent the actual condition or look of a home as constructed. Photos and/or drawings show landscaping which is not offered by Wise Homes. Square footage numbers are approximate and should be verified by the buyer and buyer's agent. Options and features may not be available on all homes or in all communities. Wise Homes reserves the right to make changes to any and/or all floor plans, options, specifications, dimensions, designs and elevations without prior notice. Wise Homes is an equal housing opportunity builder.