

THE ESCAPES AT  
**EDGEWATER**  
HUNTSVILLE · UTAH



## The Rockport II

### BASE HOME

- 4,116 Total sq. ft.
- 2,660 Finished sq. ft.
- 3 Bedrooms (2 master suites)
- 3.5 Bathrooms
- 2-Car garage
- Fireplace in great room
- 2 Partially covered decks
- 1 Balcony

### BASEMENT

- 1,456 sq. ft., 2 bedrooms, 2.5 bathrooms,
- family room with fireplace, lockout
- storage room

Edgewater is a visionary lakefront community on the south bank of Pineview Reservoir, featuring stunning single-family homes and townhomes that complement the mountain scenery. In addition to an attractive mountain architecture, the homes feature expansive windows, spacious kitchens, main-floor master suites, fireplace lounges, and two-car garages. Community amenities include gated entrances, a pool, beach access and owner storage facilities. Edgewater is just minutes from downtown Ogden and Snowbasin Ski Resort, and plans call for the development of nearby commercial establishments.

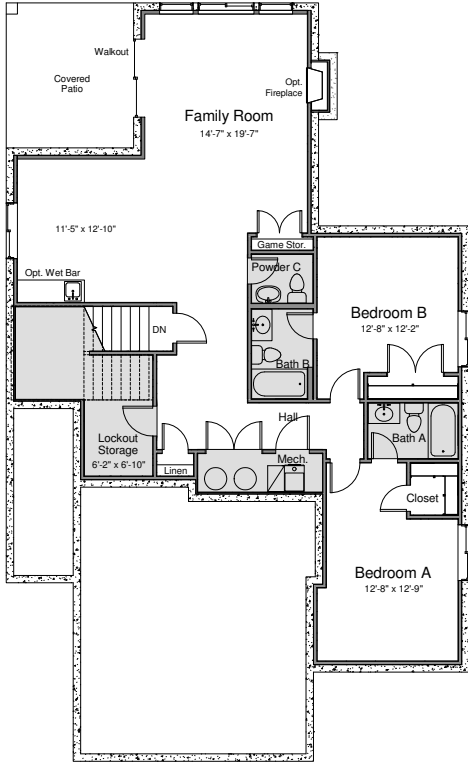
\*SEE REVERSE SIDE FOR HOME PLAN

# THE ESCAPES AT EDGEWATER

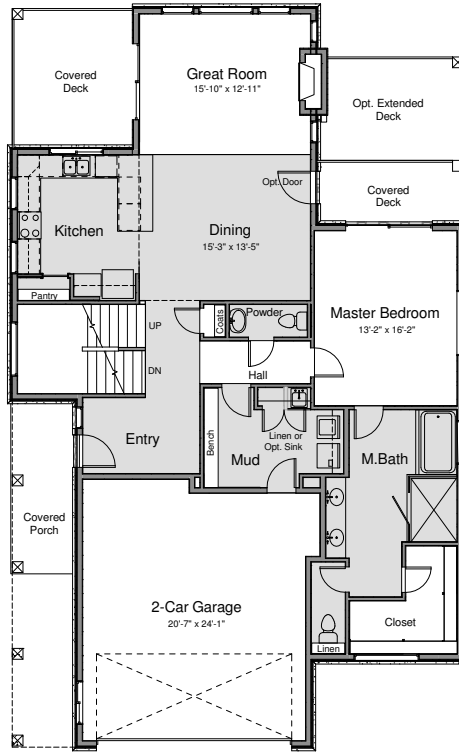
HUNTSVILLE · UTAH

## The Rockport II

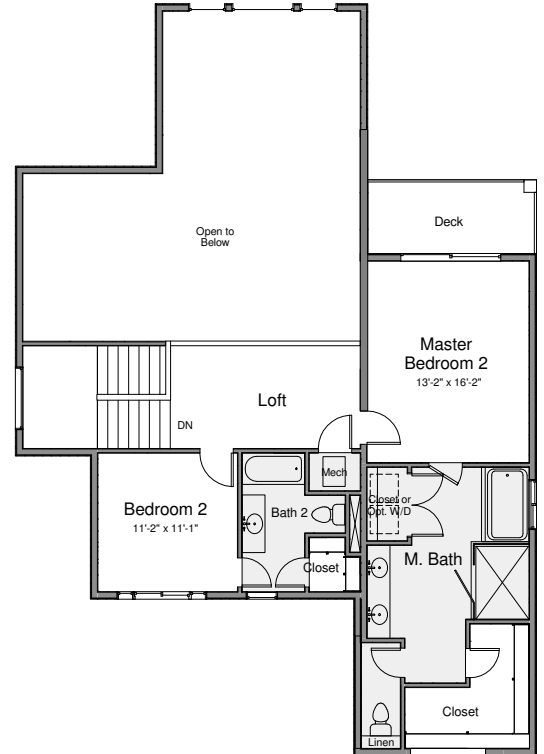
**BASEMENT LEVEL**



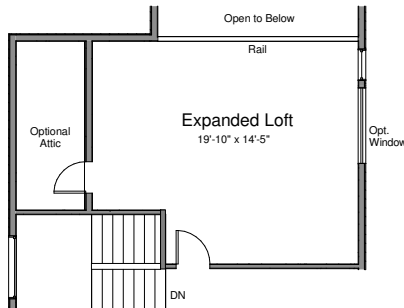
**MAIN LEVEL**



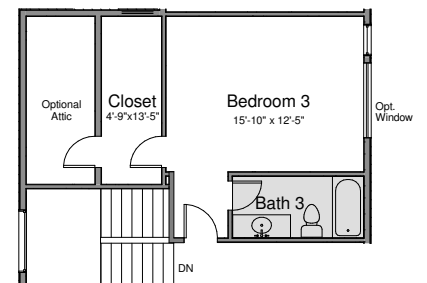
**UPPER LEVEL**



**OPT. EXPANDED LOFT**



**OPT. BEDROOM 3 & BATH 3**



MOUNTAIN REAL ESTATE COMPANIES

801-845-9309



Henry Walker Homes reserves the right to modify or change the floor plans, elevations, home specifications, designs, features, options, premiums, prices, or terms without notice or obligation. Home square footages are approximates and are subject to change.

9/14/2017

801.845.9309 | 5598 Highway 39 Huntsville, Utah | EscapeToEdgewater.com

A HENRY WALKER COMMUNITY