

PLAN NUMBER: 1505



**STYLE:** Rambler

**APPROX SQ FT:** 3000

**BEDROOMS:** 3

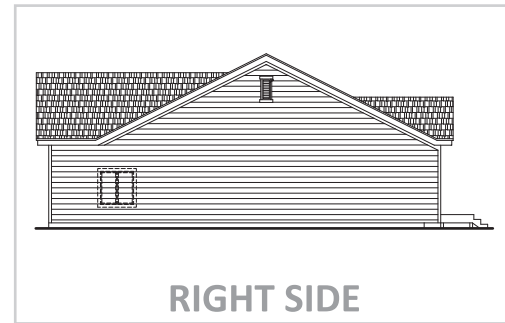
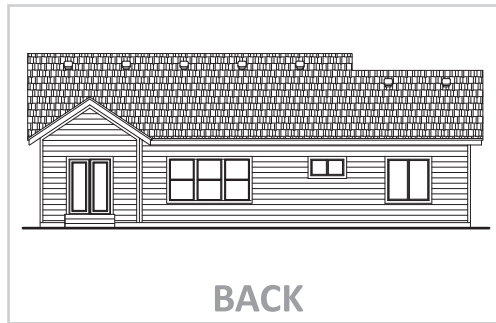
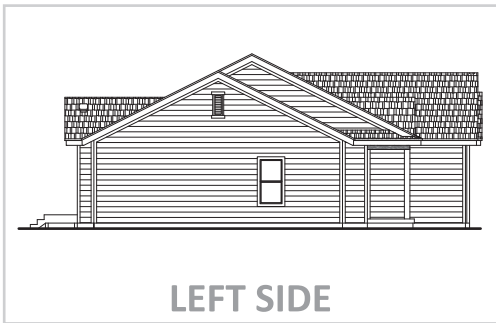
**BATHS:** 2

**GARAGE:** 3 Car

## ELEVATION A



ELEVATION A - IS FULL SIDING WITH BOARD & BATTON ON THE EAVES AND IS STANDARD IN THE ANDERSON FARMS SUBDIVISION.



## AVAILABLE ELEVATIONS

### ELEVATION B



SIDING WITH  
3 FT WAINSCOT AND 2 FT KICKBACK  
ON FRONT ONLY

### ELEVATION C



STONE AND STUCCO EXTERIOR  
ON FRONT ONLY

### ELEVATION D



STONE AND STUCCO EXTERIOR  
ON ENTIRE HOME

*Hardy/Stone options available upon request*

DISCLAIMER: These images are for illustrative purposes only. Image(s) may include optional upgrades at additional cost. All renderings, elevations, and floorplans are conceptual drawings and may not accurately represent the actual condition or look of a home as constructed. Photos and/or drawings show landscaping which is not offered by Wise Homes. Square footage numbers are approximate and should be verified by the buyer and buyer's agent. Options and features may not be available on all homes or in all communities. Wise Homes reserves the right to make changes to any and/or all floor plans, options, specifications, dimensions, designs and elevations without prior notice. Wise Homes is an equal housing opportunity builder.

# MAIN FLOOR

**APPROX SQ FT:** 1505

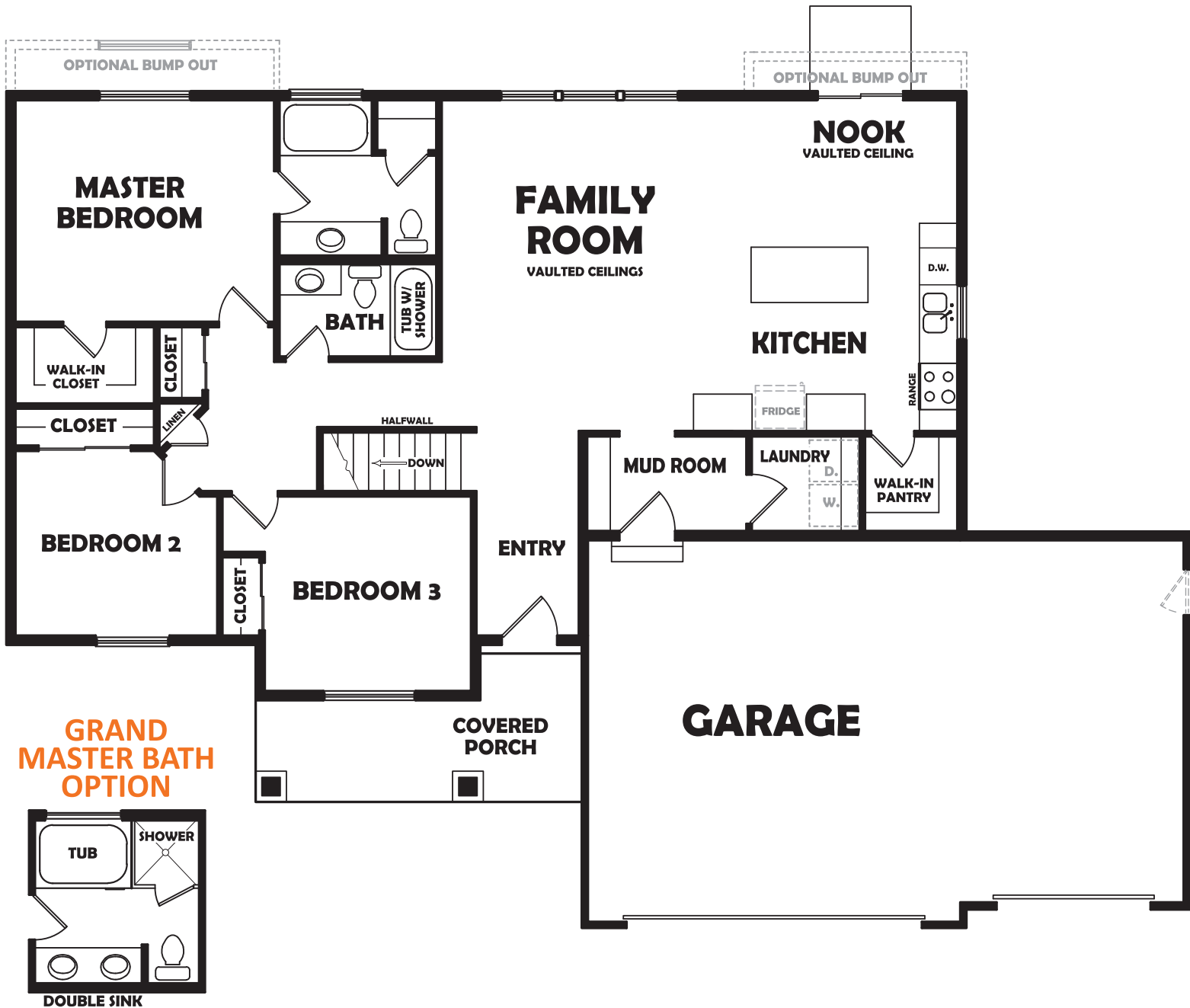
**BEDROOMS:** 3

**BATHS:** 2

**GARAGE:** 3 Car

The Palau is a ranch-style home that offers an open floor plan perfect for entertaining. The master bedroom features a walk-in closet and private bath. Grand master bath optional upgrades shown below.

Ask for more details about this plan



The fridge, washer, and dryer are NOT included. They are included on this floorplan for placement purposes only.

DISCLAIMER: These images are for illustrative purposes only. Image(s) may include optional upgrades at additional cost. All renderings, elevations, and floorplans are conceptual drawings and may not accurately represent the actual condition or look of a home as constructed. Photos and/or drawings show landscaping which is not offered by Wise Homes. Square footage numbers are approximate and should be verified by the buyer and buyer's agent. Options and features may not be available on all homes or in all communities. Wise Homes reserves the right to make changes to any and/or all floor plans, options, specifications, dimensions, designs and elevations without prior notice. Wise Homes is an equal housing opportunity builder.

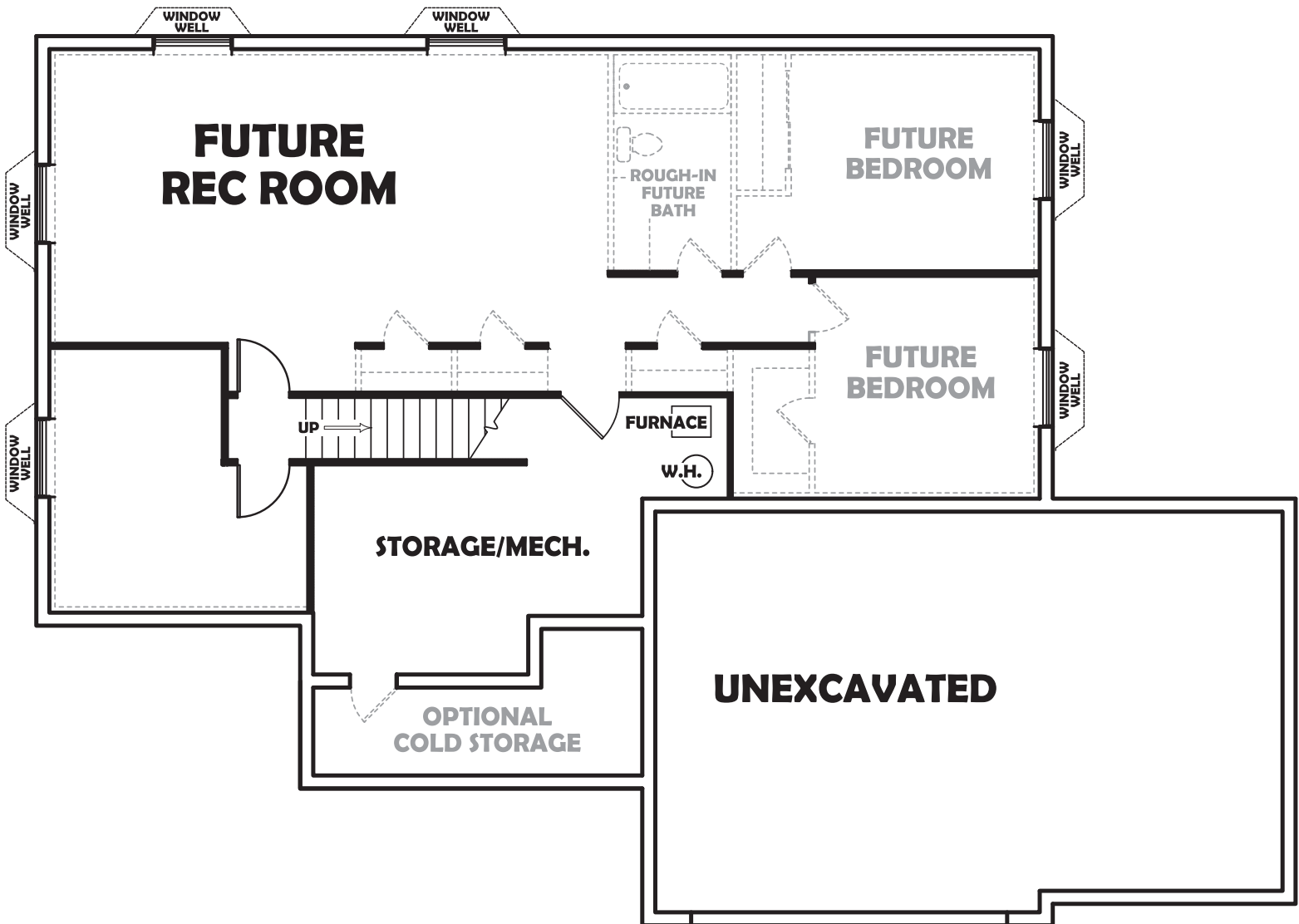
# BASEMENT

**APPROX SQ FT:** 1495

**BEDROOMS:** 2 Future

**BATHS:** 1 Future

Wise Homes' basements are unfinished, exterior walls are insulated, & bearing walls are framed. The future bathroom has been rough plumbed. (Light gray walls and features have been added below to show the optional buildout.)



DISCLAIMER: These images are for illustrative purposes only. Image(s) may include optional upgrades at additional cost. All renderings, elevations, and floorplans are conceptual drawings and may not accurately represent the actual condition or look of a home as constructed. Photos and/or drawings show landscaping which is not offered by Wise Homes. Square footage numbers are approximate and should be verified by the buyer and buyer's agent. Options and features may not be available on all homes or in all communities. Wise Homes reserves the right to make changes to any and/or all floor plans, options, specifications, dimensions, designs and elevations without prior notice. Wise Homes is an equal housing opportunity builder.