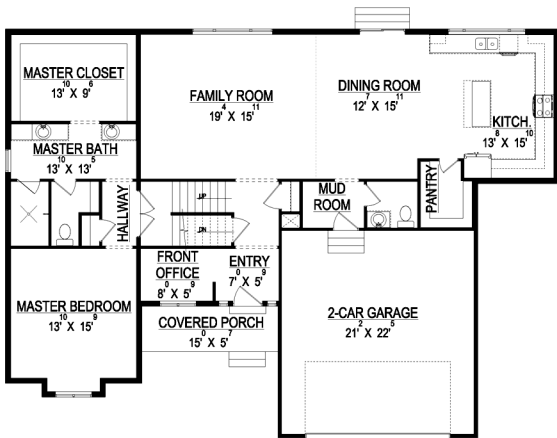


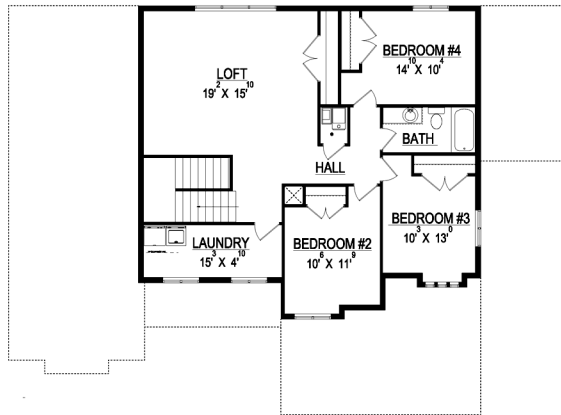
# the CAT



\*Some items shown in artistic rendering may be optional.



**MAIN FLOOR**



**UPPER FLOOR**

**STANDARD FEATURES:**

- Four (4) Bedrooms and Two and a Half (2.5) Baths
- Large Loft Upstairs
- Front Load 2 Car Garage
- Master Suite on it's own Level
- Grand Master Bath with Walk-In Shower
- Large Walk-in Pantry
- Large Mud Room
- Extra Height in Basement Below Master Suite
- Craftsman Style Elevation
- Large Covered Porch with Cold Storage Below
- Three (3) Basement Windows

**SPECS:**

Width:	61'-0"
Depth:	45'-0"
Upper:	1,192
Main:	1,697
Basement:	<u>1,768</u>
<b>Total:</b>	<b>4,657</b>
<i>Finished:</i>	<i>2,889</i>
Beds:	4
Baths:	2.5
Garages:	2



GET STARTED TODAY

801-810-8833  
LightyearCustomHomes.com

