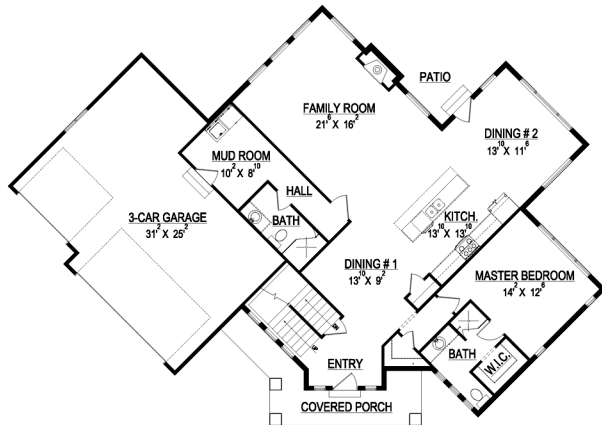


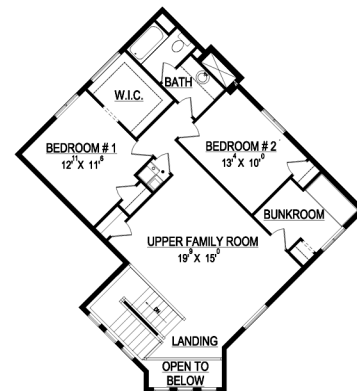
# the CARRIE



\*Some items shown in artistic rendering may be optional.



**MAIN FLOOR**



**UPPER FLOOR**

### STANDARD FEATURES:

- Three (3) Bedrooms and Three (3) Baths
- Grand Entry, and 2 Large Family Rooms
- Fireplace
- Three (3) Car Garage
- Window Package as Designed
- "Craftsman" style elevation
- Large Island and 2 Dining Spaces
- Large Covered Porch at Entry
- Main Level Mud Room/ Laundry Combo
- Two Furnaces and Two A/C Units
- Four (4) Basement Windows

### SPECS:

Width:	76'-0"
Depth:	53'-4.5"
Upper:	1,120
Main:	1,638
Basement:	<u>1,636</u>
<b>Total:</b>	<b>4,394</b>
<i>Finished:</i>	<i>2,758</i>
Beds:	3
Baths:	3
Garages:	3



GET STARTED TODAY

801-810-8833  
LightyearCustomHomes.com

