

THE CAMI



01

STANDARD FEATURES

- Four Bedrooms and Two and a Half Baths
- Grand Entry, Family Room, & Loft
- Four Panel Glass Sliding Doors out Family Room
- Three Car Garage w/ Side Entry
- Window Package as Designed
- Craftsman Style Elevation
- Free-Standing Tub & Separate Shower in Master Bath
- Two Sinks w/ Split Vanity in Master Bath
- Walk-in Pantry
- One Two-sided Fireplace
- Four Basement Windows

02

SPECIFICATIONS

Width	59'-6"
Depth	60'-0"
Upper	972
Main	1,760
Basement	1,993
Total	4,725
Finished	2,732
Beds	4
Baths	2.5
Garage	3



GET STARTED TODAY

801.810.8833

LightyearCustomHomes.com

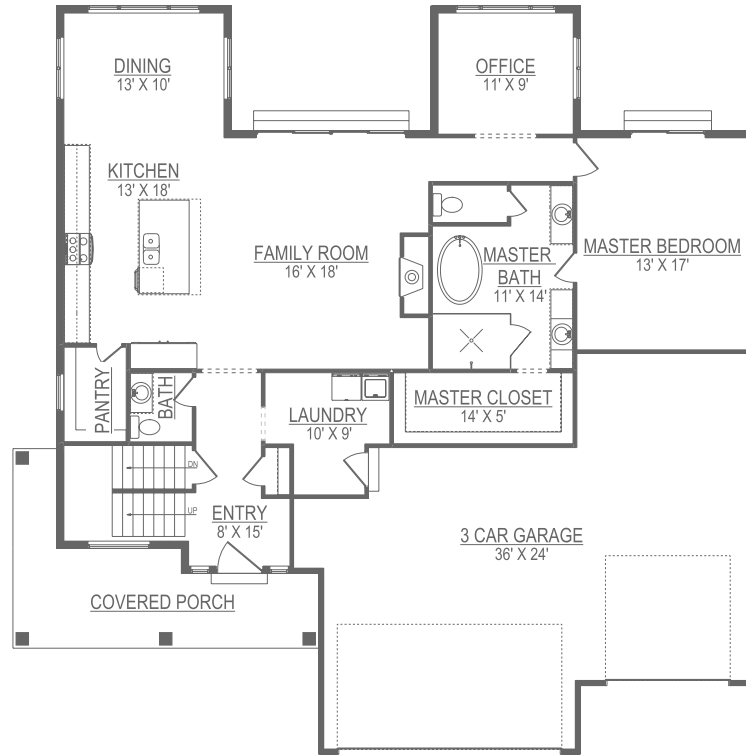


ULRICHREALTORS

801.733.6555

THE CAMI

MAIN FLOOR



UPPER FLOOR

