



\*Rendering may include additional features that are not in the standard package

# 01

## STANDARD FEATURES

- Four Bedrooms and Two and a Half Baths
- Large Family Room & Loft
- Covered Patio
- Three Car Garage
- Window Package as Designed
- Craftsman Style Elevation
- Oversized Master Shower
- Mud Room
- Walk-in Pantry
- One Fireplace
- Four Basement Windows

# 02

## SPECIFICATIONS

Width	48'-0"
Depth	46'-0"
Upper	1,268
Main	850
Basement	850
<b>Total</b>	<b>2,968</b>
Finished	2,118
Beds	4
Baths	2.5
Garage	3



GET STARTED TODAY

801.810.8833

LightyearCustomHomes.com

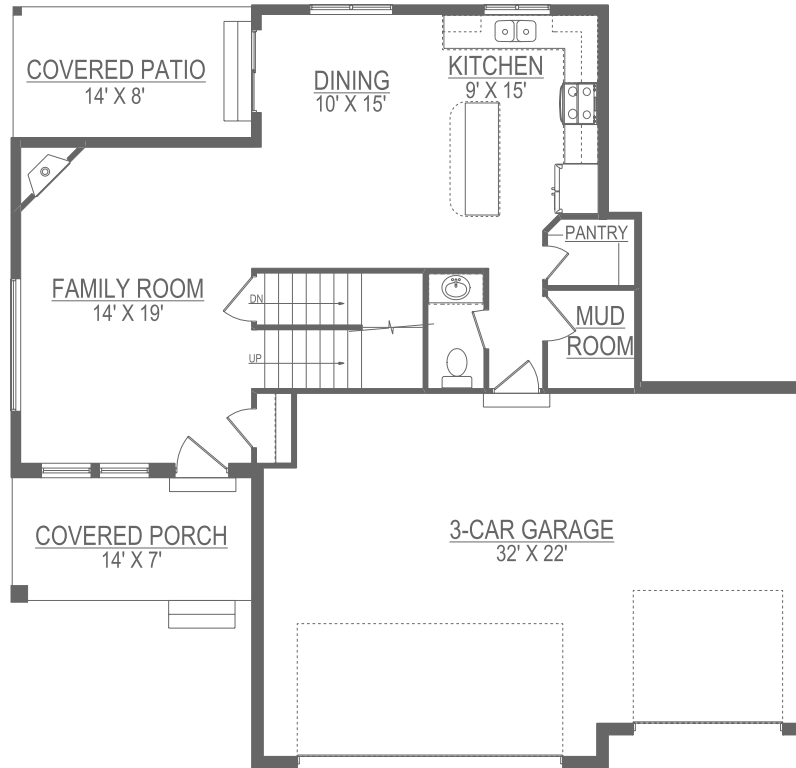


ULRICHREALTORS

801.733.6555

# THE BREANNE

## MAIN FLOOR



## UPPER FLOOR

