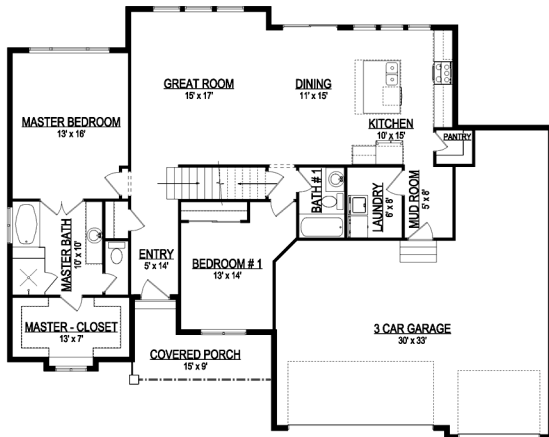


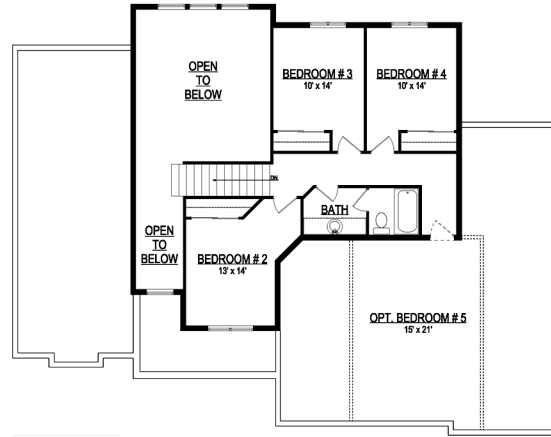
# the BECKY



\*Some items shown in artistic rendering may be optional.



**MAIN FLOOR**



**UPPER FLOOR**

### STANDARD FEATURES:

- Five (5) Bedrooms and Three (3) Baths
- Great Room Featuring High Vaulted Ceilings
- Three (3) Car Garage w/ Extra Depth
- Window Package as Designed
- “Craftsman” style elevation
- Separate Tub & Shower in Master Bath
- Main floor laundry room
- Walk-in Pantry
- Oversized Island Bar
- Four (4) Basement Windows

### SPECS:

Width:	60'-0"
Depth:	47'-6"
Upper:	738
Main:	1,516
Basement:	<u>1,489</u>
<b>Total:</b>	<b>3,743</b>
<i>Finished:</i>	<i>2,254</i>
Beds:	5
Baths:	3
Garages:	3



GET STARTED TODAY

**801-810-8833**  
LightyearCustomHomes.com

