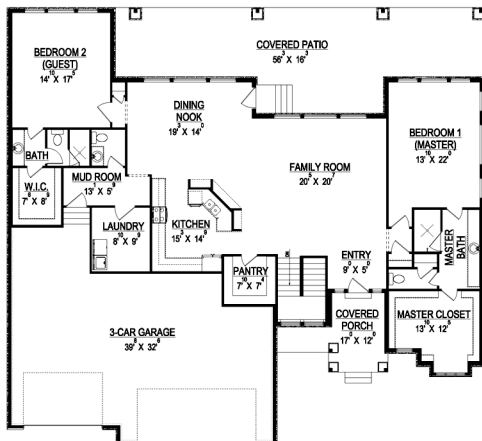


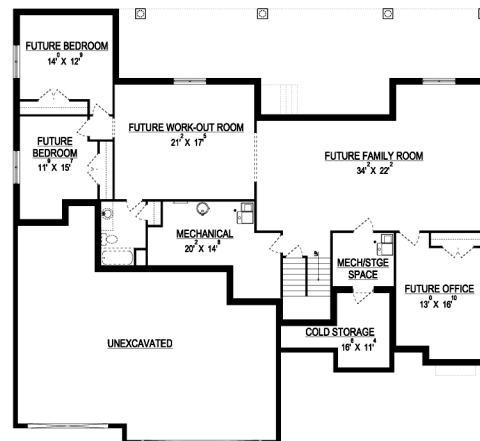
the AMANDA



*Some items shown in artistic rendering may be optional.



MAIN FLOOR



BASEMENT

STANDARD FEATURES:

- Two (2) Bedrooms and Two and a Half (2.5) Baths
- L-Shaped Kitchen, Dining, Family Room
- High Vaulted Ceiling Through Entry and Family Rooms
- Large Covered Patio out Dining (Approx. 689 sqft)
- Window Package as Designed
- Raised Entry and Stylish "Prairie" Style Elevation
- Oversized Master Vanity with Large Walk-In Shower
- Three (3) Car Garage (Oversized Approx. 1076 sqft)
- Walk-in Pantry
- (2) HVAC Systems
- Five (5) Basement Windows

SPECS:

Width:	72'-0"
Depth:	66'-0"
Upper:	0
Main:	2,422
Basement:	<u>2,549</u>
Total:	4,971
<i>Finished:</i>	2,422
Beds:	2
Baths:	2.5
Garages:	3



GET STARTED TODAY

801-810-8833

LightyearCustomHomes.com

