



EASTRIDGE

P A R K

Cottage Home Collection



Sheri Peck

Sales Manager

(801) 660-1975

ERPsales@hawkinshomes.net



	Square Feet
Main Floor (finished)	1257
Basement (unfinished)	1190
Total Living Area	2447

Bedrooms	1
Bathrooms	1.5
Garage	2-car
Width	36'

Structural Options Available:

- Fireplace
- Grand Owner's Bath
- Privacy Owner's Bath



Urban Craftsman

Farmhouse Elevation & Floorplan on reverse side

Please note: These materials (including any landscaping shown) are for illustrative purposes only and may not reflect the actual building plans, products, and/or specifications. Square footage information provided is reliable but not guaranteed. All plans, prices, and specifications are subject to change without notice. See a Hawkins sales representative for specific details. ©2017 Hawkins Homes & Communities LLC (4/2017)

801-451-6411

12 South Main St
Kaysville, UT 84037

hawkinshomes.com

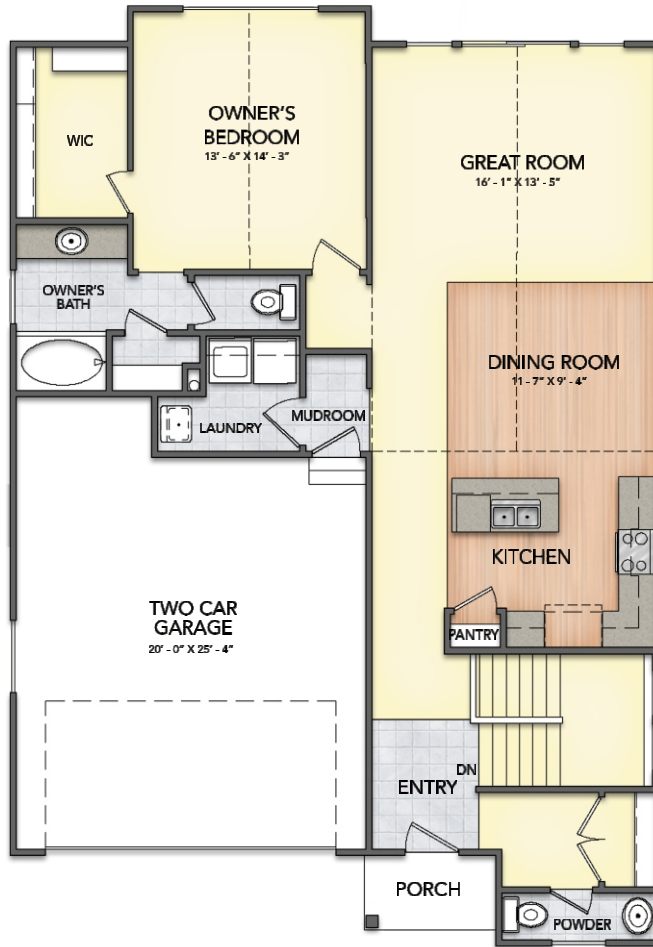
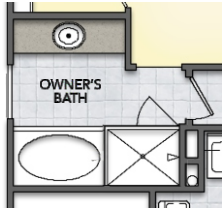


MAIN FLOOR

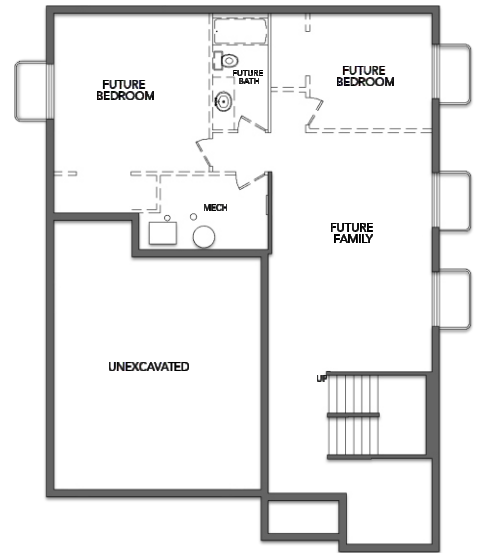
OAKMONT

Main 1257sf
 Basement 1190sf
 Total 2447sf

Grand Owner's Bath



BASEMENT (reduced scale)



Contemporary Farmhouse



Please note: These materials (including any landscaping shown) are for illustrative purposes only and may not reflect the actual building plans, products, and/or specifications. Square footage information provided is reliable but not guaranteed. All plans, prices, and specifications are subject to change without notice. See a Hawkins sales representative for specific details. ©2017 Hawkins Homes & Communities LLC (4/2017)