



EASTRIDGE

P A R K

Cottage Home Collection



Sheri Peck

Sales Manager

(801) 660-1975

ERPsales@hawkinshomes.net



	Square Feet
Main Floor (finished)	1390
Basement (unfinished)	1350
Total Living Area	2740

Bedrooms	1
Bathrooms	1.5
Garage	2-car Plus
Width	40'

Structural Options Available:

- Fireplace
- Grand Owner's Bath
- Privacy Owner's Bath



Urban Craftsman

Prairie Elevation & Floorplan on reverse side

Please note: These materials (including any landscaping shown) are for illustrative purposes only and may not reflect the actual building plans, products, and/or specifications. Square footage information provided is reliable but not guaranteed. All plans, prices, and specifications are subject to change without notice. See a Hawkins sales representative for specific details. ©2017 Hawkins Homes & Communities LLC (4/2017)

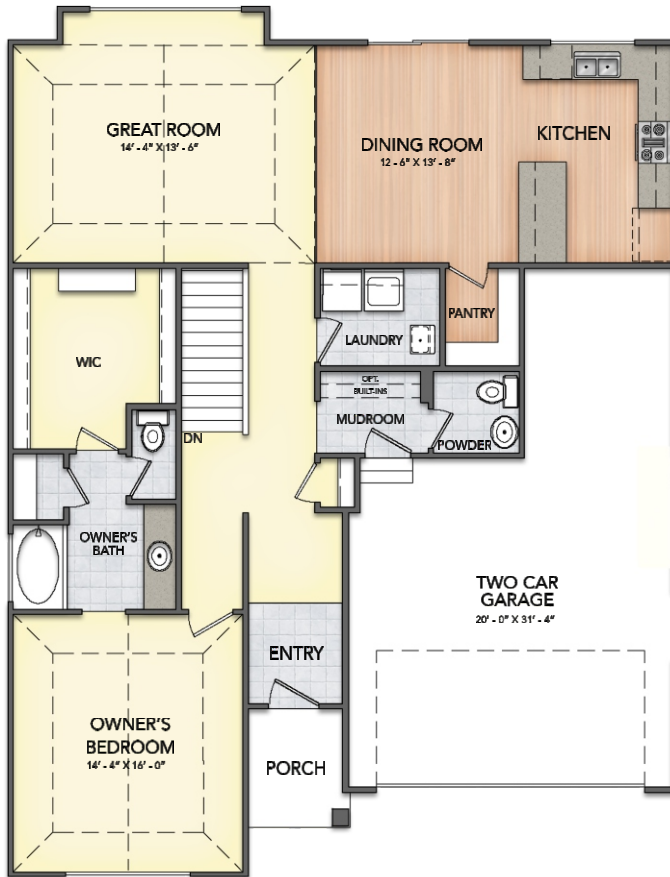
801-451-6411

12 South Main St
Kaysville, UT 84037

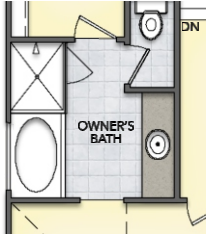
hawkinshomes.com



MAIN FLOOR



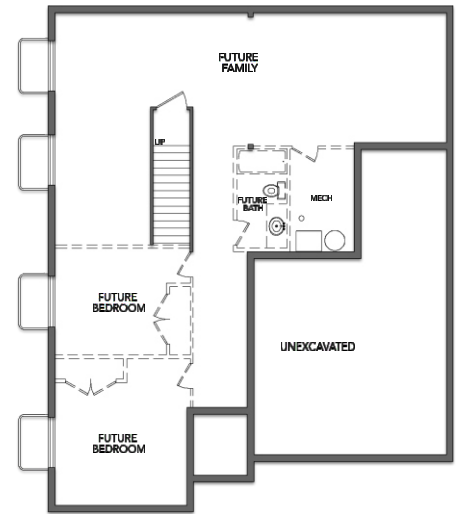
Grand Owner's Bath



CREEKMORE

Main	1390sf
Basement	1350sf
Total	2740sf

BASEMENT (reduced scale)



Modern Prairie



Please note: These materials (including any landscaping shown) are for illustrative purposes only and may not reflect the actual building plans, products, and/or specifications. Square footage information provided is reliable but not guaranteed. All plans, prices, and specifications are subject to change without notice. See a Hawkins sales representative for specific details. ©2017 Hawkins Homes & Communities LLC (4/2017)