



EASTRIDGE

PARK

Cottage Home Collection



Sheri Peck

Sales Manager

(801) 660-1975

ERPsales@hawkinshomes.com



	Square Feet
Main Floor (finished)	866
Upper Floor (finished)	820
Total Finished Area	1686
Basement (unfinished)	866
Total Living Area	2552

Bedrooms	3
Bathrooms	2.5
Garage	2-car Plus
Width	36'

Structural Options Available:

- Fireplace
- Den
- Grand Owner's Bath
- Privacy Owner's Bath
- Privacy Hall Bath



Modern Prairie

Floorplan on reverse side

Please note: These materials (including any landscaping shown) are for illustrative purposes only and may not reflect the actual building plans, products, and/or specifications. Square footage information provided is reliable but not guaranteed. All plans, prices, and specifications are subject to change without notice. See a Hawkins sales representative for specific details. ©2016 Hawkins Homes & Communities LLC (9/2016)

801-451-6411

12 South Main St
Kaysville, UT 84037

hawkinshomes.com



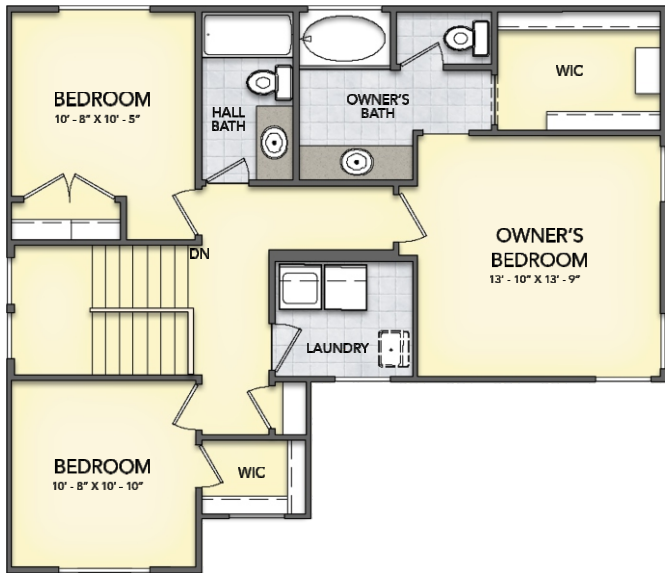
PARKLANE

Main	866sf
Upper	820sf
Basement	866sf
Total	2552sf

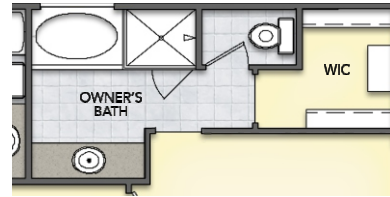
MAIN FLOOR



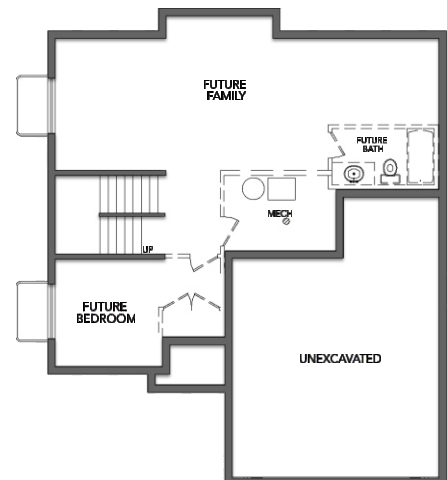
UPPER FLOOR



Grand Owner's Bath



BASEMENT (reduced scale)



Please note: These materials (including any landscaping shown) are for illustrative purposes only and may not reflect the actual building plans, products, and/or specifications. Square footage information provided is reliable but not guaranteed. All plans, prices, and specifications are subject to change without notice. See a Hawkins sales representative for specific details. ©2016 Hawkins Homes & Communities LLC (9/2016)