



# EASTRIDGE

PARK

## Cottage Home Collection



**Sheri Peck**

Sales Manager

(801) 660-1975

ERPsales@hawkinshomes.com



	Square Feet
Main Floor (finished)	940
Upper Floor (finished)	973
<b>Total Finished Area</b>	<b>1913</b>
Basement (unfinished)	940
<b>Total Living Area</b>	<b>2853</b>

Bedrooms	3
Bathrooms	2.5
Garage	3-car
Width	36'

### Structural Options Available:

- Grand Family Room
- Guest Bedroom/Bath (Main Floor)
- Fireplace
- Den
- Grand Owner's Bath
- Privacy Owner's Bath
- Privacy Hall Bath



Contemporary Farmhouse

Floorplan on reverse side

Please note: These materials (including any landscaping shown) are for illustrative purposes only and may not reflect the actual building plans, products, and/or specifications. Square footage information provided is reliable but not guaranteed. All plans, prices, and specifications are subject to change without notice. See a Hawkins sales representative for specific details. ©2016 Hawkins Homes & Communities LLC (9/2016)

801-451-6411

12 South Main St  
Kaysville, UT 84037

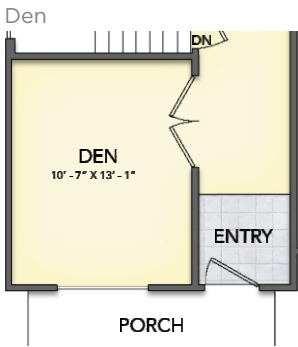
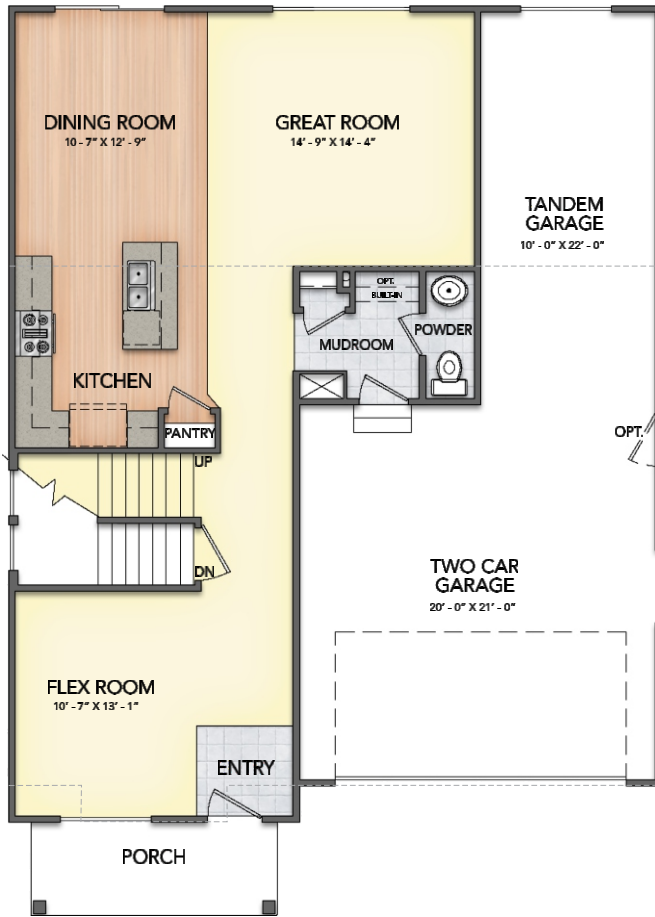
hawkinshomes.com



# ORCHARD

Main 940sf  
 Upper 973sf  
 Basement 940sf  
 Total 2853sf

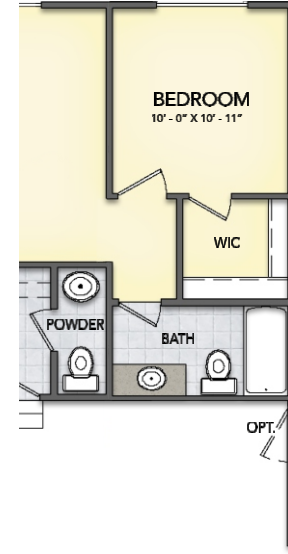
## MAIN FLOOR



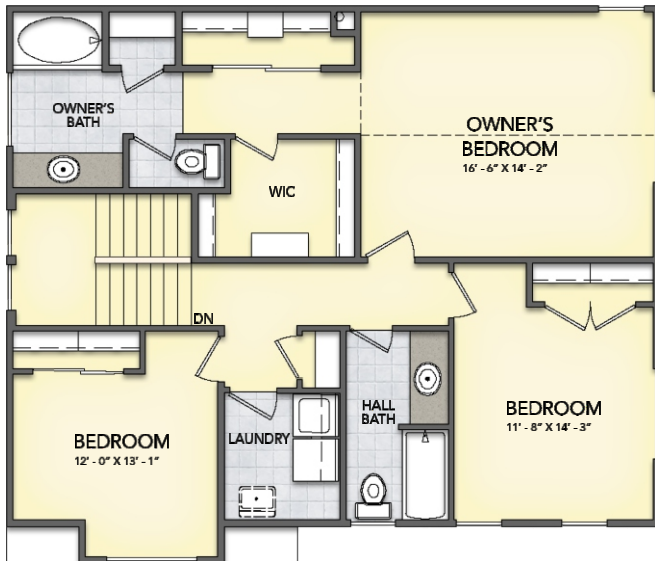
## Grand Family Room



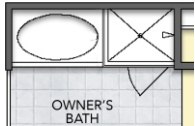
## Guest Bedroom/Bath



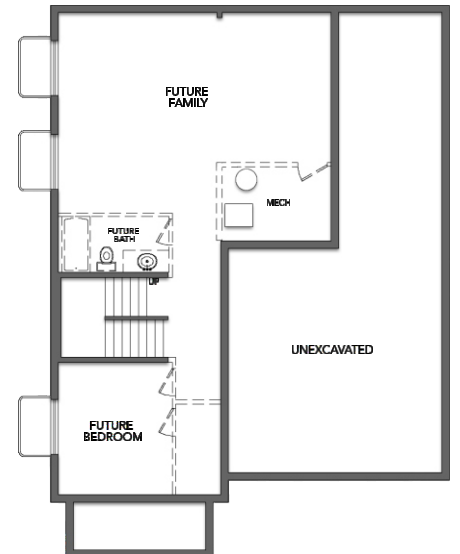
## UPPER FLOOR



## Grand Owner's Bath



## BASEMENT (reduced scale)



Please note: These materials (including any landscaping shown) are for illustrative purposes only and may not reflect the actual building plans, products, and/or specifications. Square footage information provided is reliable but not guaranteed. All plans, prices, and specifications are subject to change without notice. See a Hawkins sales representative for specific details. ©2016 Hawkins Homes & Communities LLC (9/2016)