



EASTRIDGE

PARK

Cottage Home Collection



Sheri Peck

Sales Manager

(801) 660-1975

ERPsales@hawkinshomes.com



	Square Feet
Main Floor (finished)	896
Upper Floor (finished)	1001
Total Finished Area	1897
Basement (unfinished)	896
Total Living Area	2793

Bedrooms	3
Bathrooms	2.5
Garage	2-car
Width	36'

Structural Options Available:

- Fireplace
- Den
- Grand Owner's Bath
- Privacy Owner's Bath
- Privacy Hall Bath



Contemporary Farmhouse

Floorplan on reverse side

Please note: These materials (including any landscaping shown) are for illustrative purposes only and may not reflect the actual building plans, products, and/or specifications. Square footage information provided is reliable but not guaranteed. All plans, prices, and specifications are subject to change without notice. See a Hawkins sales representative for specific details. ©2016 Hawkins Homes & Communities LLC (9/2016)

801-451-6411

12 South Main St
Kaysville, UT 84037

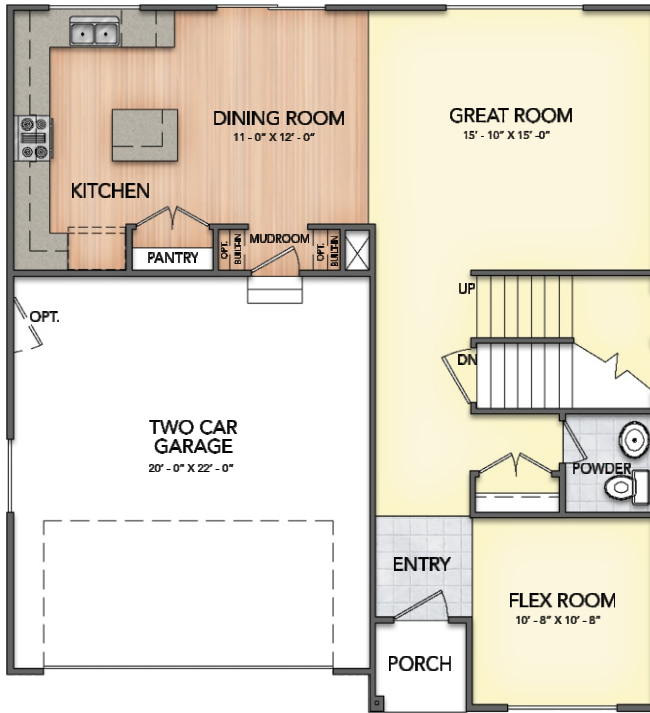
hawkinshomes.com



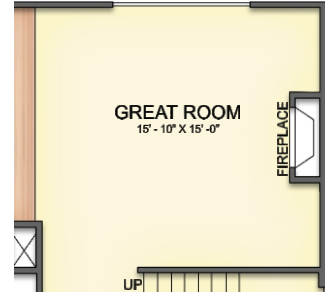
MEADOW

Main 896sf
 Upper 1001sf
 Basement 896sf
 Total 2793sf

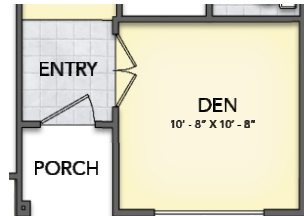
MAIN FLOOR



Great Room w/Fireplace

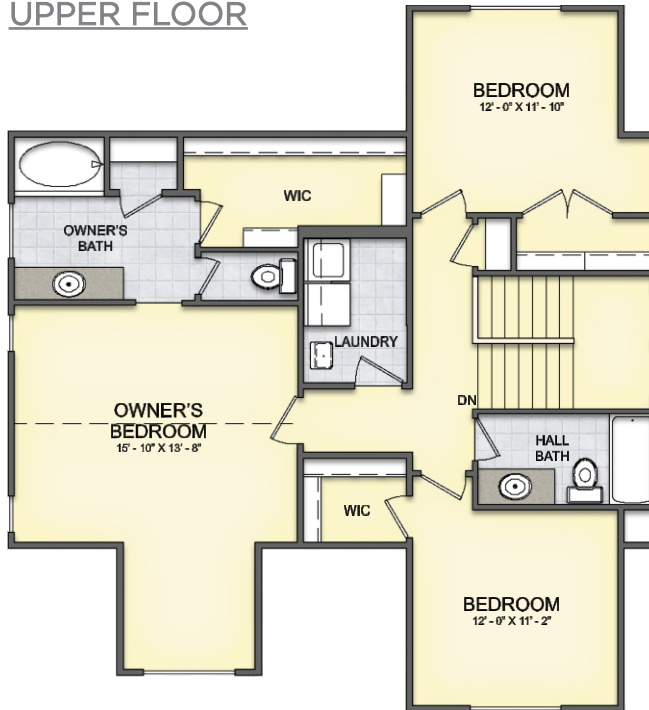
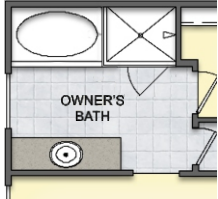


Den

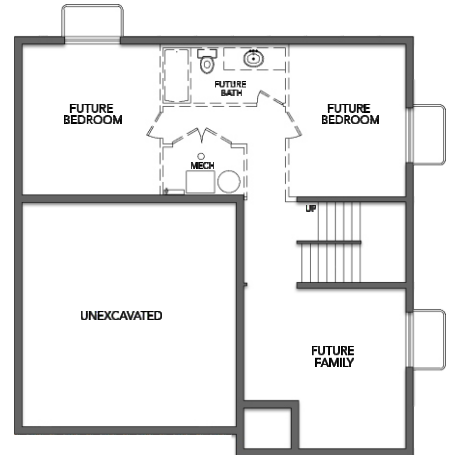


UPPER FLOOR

Grand Owner's Bath



BASEMENT (reduced scale)



Please note: These materials (including any landscaping shown) are for illustrative purposes only and may not reflect the actual building plans, products, and/or specifications. Square footage information provided is reliable but not guaranteed. All plans, prices, and specifications are subject to change without notice. See a Hawkins sales representative for specific details. ©2016 Hawkins Homes & Communities LLC (9/2016)