



EASTRIDGE

PARK

Cottage Home Collection



Sheri Peck

Sales Manager

(801) 660-1975

ERPsales@hawkinshomes.com



	Square Feet
Main Floor (finished)	906
Upper Floor (finished)	1227
Total Finished Area	2133
Basement (unfinished)	1000
Total Living Area	3133

Bedrooms	3
Bathrooms	2.5
Garage	2-car Plus
Width	36'

Structural Options Available:

- 4th Bedroom (Upper Floor)
- Double Closet
- Fireplace
- Den
- Grand Owner's Bath
- Privacy Owner's Bath
- Privacy Hall Bath



Modern Prairie

Floorplan on reverse side

Please note: These materials (including any landscaping shown) are for illustrative purposes only and may not reflect the actual building plans, products, and/or specifications. Square footage information provided is reliable but not guaranteed. All plans, prices, and specifications are subject to change without notice. See a Hawkins sales representative for specific details. ©2016 Hawkins Homes & Communities LLC (9/2016)

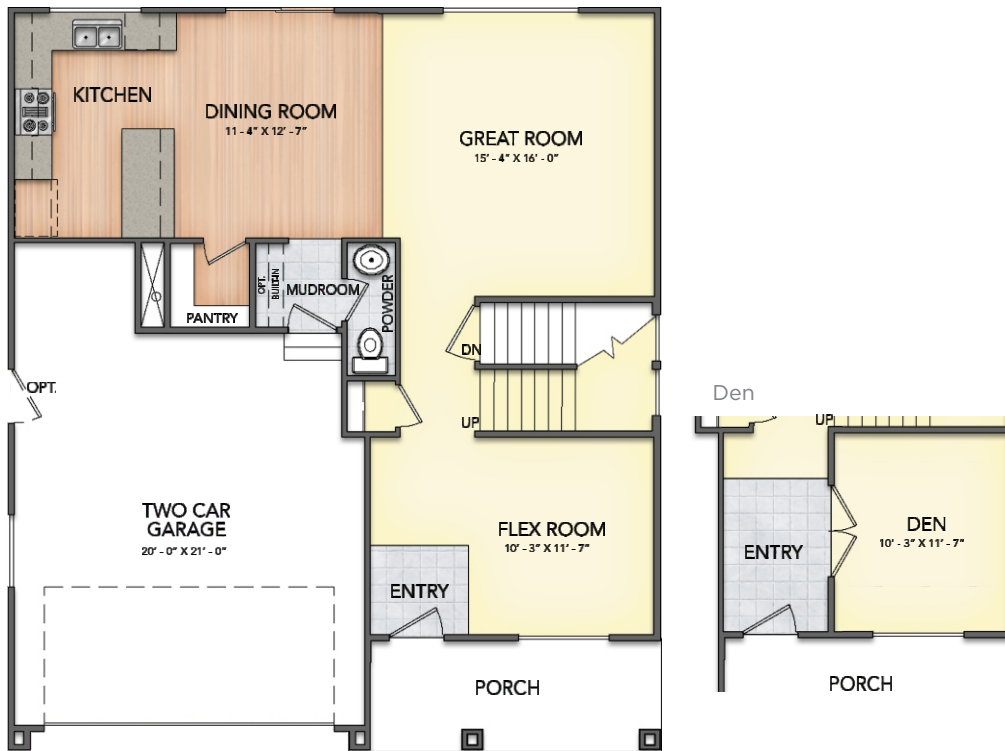
801-451-6411

12 South Main St
Kaysville, UT 84037

hawkinshomes.com



MAIN FLOOR

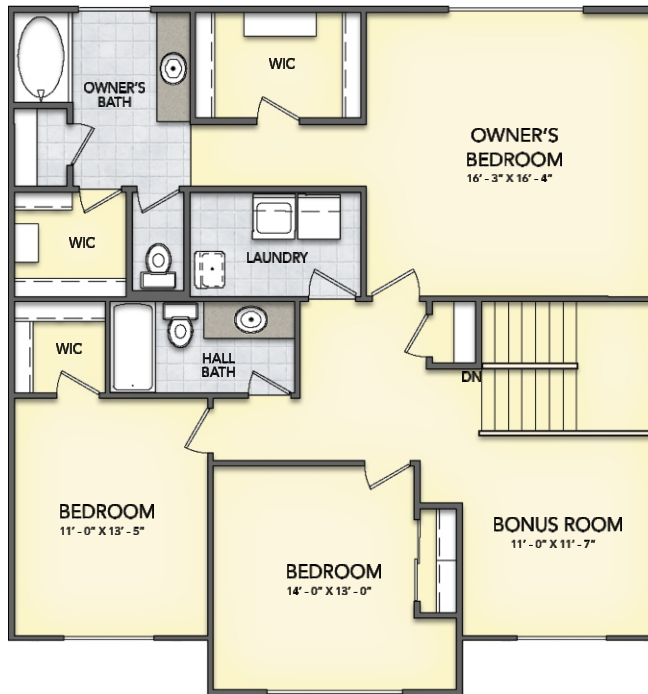
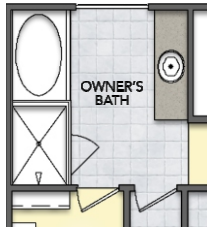


HILLCREST

Main	906sf
Upper	1227sf
Basement	1000sf
Total	3133sf

UPPER FLOOR

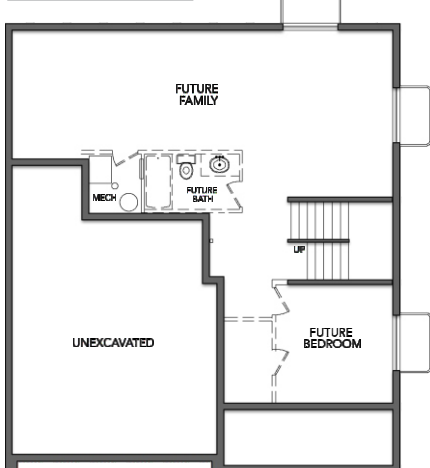
Grand Owner's Bath



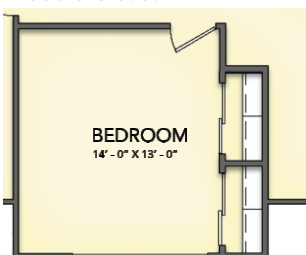
Bedroom 4



BASEMENT (reduced scale)



Double Closet



Please note: These materials (including any landscaping shown) are for illustrative purposes only and may not reflect the actual building plans, products, and/or specifications. Square footage information provided is reliable but not guaranteed. All plans, prices, and specifications are subject to change without notice. See a Hawkins sales representative for specific details. ©2016 Hawkins Homes & Communities LLC (9/2016)

HAWKINS
HOMES AND COMMUNITIES