



SAGE HOMES



Scandinavian

OAKLEY
4-6 Beds | 2.5-3.5 Bath
2-3 Car Garage | 2,633 Finished SF



Modern Prairie



Modern Farmhouse

This floor plan works in most of our communities. Please check with your Sage Homes Sales Agent for more information. Some depicted features may be optional. This information is deemed reliable, but not guaranteed. ©Sage Homes. The use of these plans, drawings, and renderings is expressly limited to Sage Homes. Re-use, reproduction by any method, in whole or in part, is prohibited. Floor plans and renderings are the artist's conception and may include some optional features. Ask a Sage Homes Sales Agent for details.



SAGE HOMES

BASEMENT
1,791 SQFT

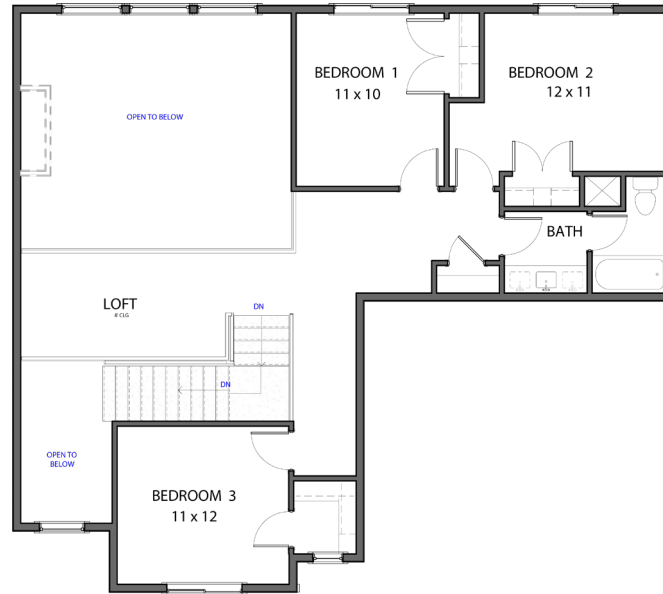
MAIN FLOOR
1,788 SQFT

SECOND FLOOR
845 SQFT

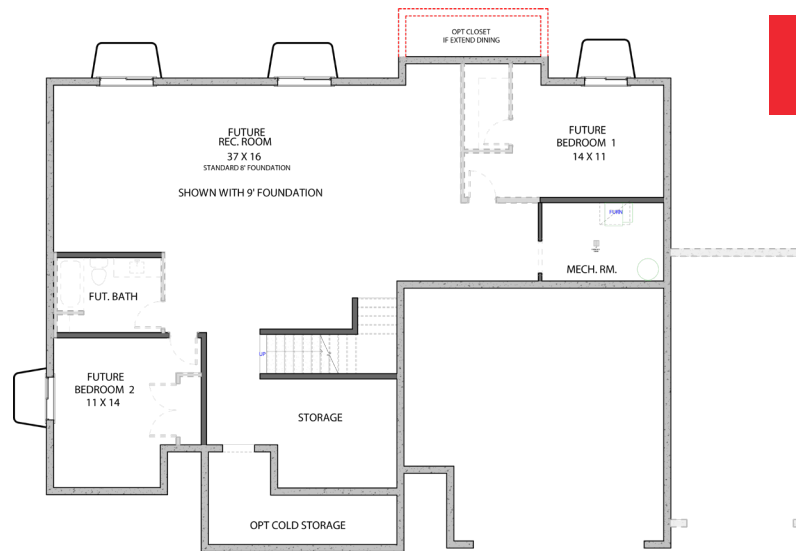
FINISHED SQFT
2,633 SQFT

TOTAL SQFT
4,424 SQFT

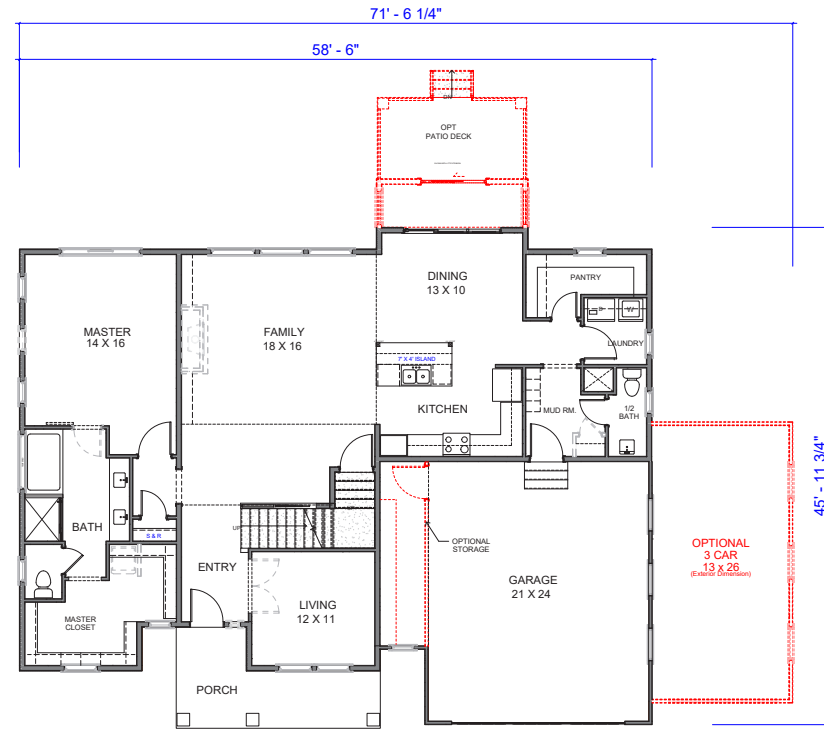
SECOND FLOOR



BASEMENT



MAIN FLOOR



AVAILABLE OPTIONS

- 3 Car Garage
- 9ft Basement
- Finished Basement
- Trex Deck/Covered Trex Deck
- Covered Patio
- 2ft-4ft Dining Extension
- Cold Storage
- 2ft Master Bedroom Extension