



SAGE HOMES



Scandinavian

MANHATTAN
4-6 Beds | 2.5-3.5 Bath
2-3 Car Garage | 2,599 Finished SF



Modern Prairie



Modern Farmhouse

This floor plan works in most of our communities. Please check with your Sage Homes Sales Agent for more information. Some depicted features may be optional. This information is deemed reliable, but not guaranteed. ©Sage Homes. The use of these plans, drawings, and renderings is expressly limited to Sage Homes. Re-use, reproduction by any method, in whole or in part, is prohibited. Floor plans and renderings are the artist's conception and may include some optional features. Ask a Sage Homes Sales Agent for details.



SAGE HOMES

BASEMENT
1,246 SQFT

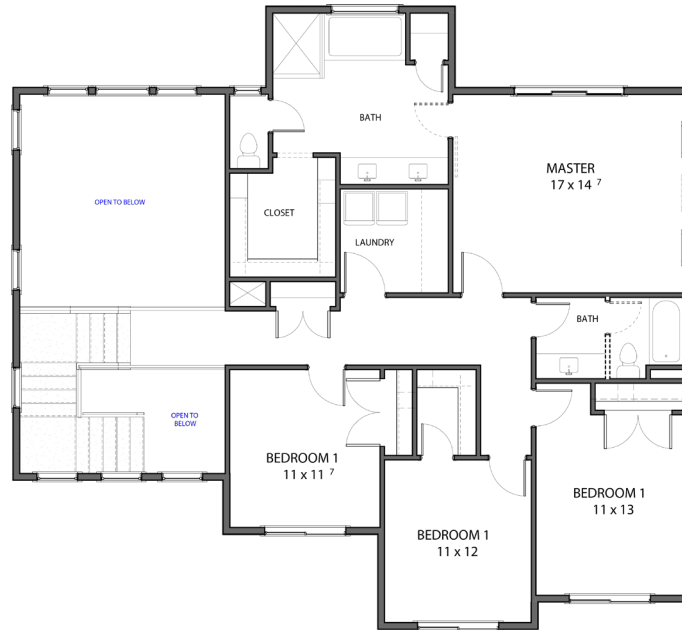
MAIN FLOOR
1,242 SQFT

SECOND FLOOR
1,357 SQFT

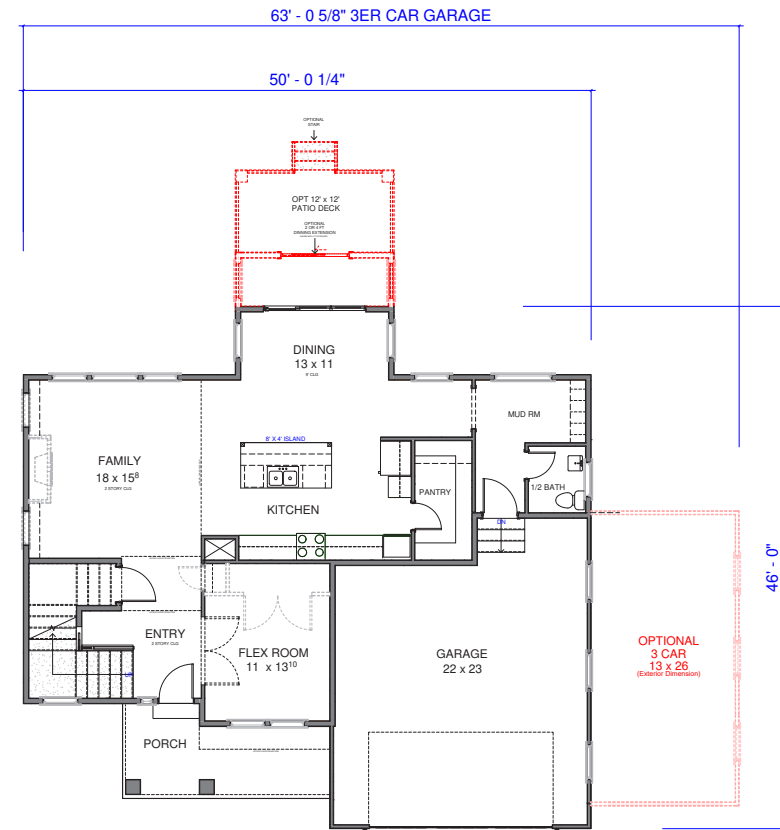
FINISHED SQFT
2,599 SQFT

TOTAL SQFT
3,847 SQFT

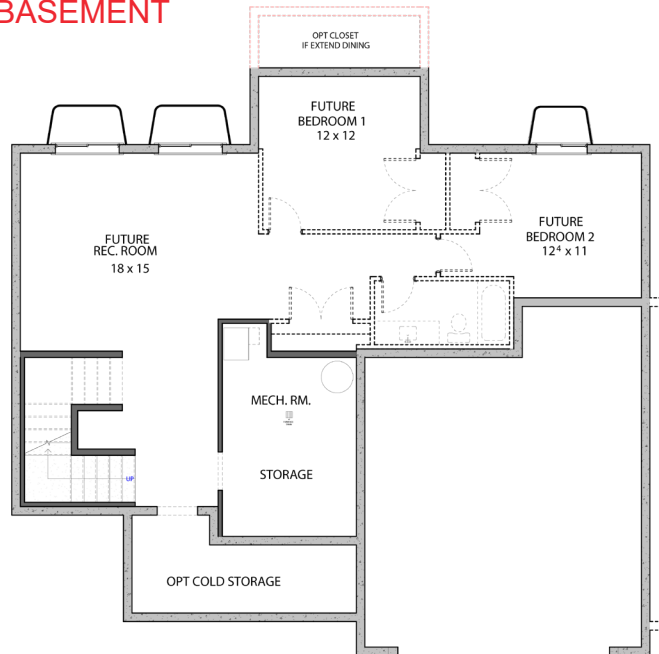
SECOND FLOOR



MAIN FLOOR



BASEMENT



AVAILABLE OPTIONS

- 3 Car Garage
- 9ft Basement
- Finished Basement
- Trex Deck/Covered Trex Deck
- Covered Patio
- 2ft-4ft Dining Extension
- Cold Storage